



Cleaved-Caspase-6 p18 (D162) Polyclonal Antibody

Catalog No	BYab-00005
Isotype	IgG
Reactivity	Mouse;Rat
Applications	WB;IHC;IF;ELISA
Gene Name	CASP6
Protein Name	Caspase6
Immunogen	The antiserum was produced against synthesized peptide derived from mouse Caspase 6. AA range:144-193
Specificity	Cleaved-Caspase-6 p18 (D162) Polyclonal Antibody detects endogenous levels of fragment of activated Caspase-6 p18 protein resulting from cleavage adjacent to D162.
Formulation	Liquid in PBS containing 50% glycerol, 0.5% BSA and 0.02% sodium azide.
Source	Polyclonal, Rabbit,IgG
Purification	The antibody was affinity-purified from rabbit antiserum by affinity-chromatography using epitope-specific immunogen.
Dilution	WB: 1/500 - 1/2000. IHC: 1/100 - 1/300. ELISA: 1/10000.. IF 1:50-200
Concentration	1 mg/ml
Purity	≥90%
Storage Stability	-20°C/1 year
Synonyms	CASP6; MCH2; Caspase-6; CASP-6; Apoptotic protease Mch-2
Observed Band	28+35kD
Cell Pathway	
Tissue Specificity	
Function	
Background	CASP6 encodes a member of the cysteine-aspartic acid protease (caspase) family of enzymes. Sequential activation of caspases plays a central role in the execution-phase of cell apoptosis. Caspases exist as inactive proenzymes which undergo proteolytic processing at conserved aspartic acid residues to produce two subunits, large and small, that dimerize to form the active enzyme.Caspase 6 is processed by caspases 7, 8 and 10, and is thought to function as a downstream enzyme in the caspase activation cascade. Alternative splicing of CASP6 results

Nanjing BYabscience technology Co.,Ltd



in multiple transcript variants that encode different isoforms.

**matters needing
attention**

Avoid repeated freezing and thawing!

Usage suggestions

This product can be used in immunological reaction related experiments. For more information, please consult technical personnel.

Nanjing BYabscience technology Co.,Ltd

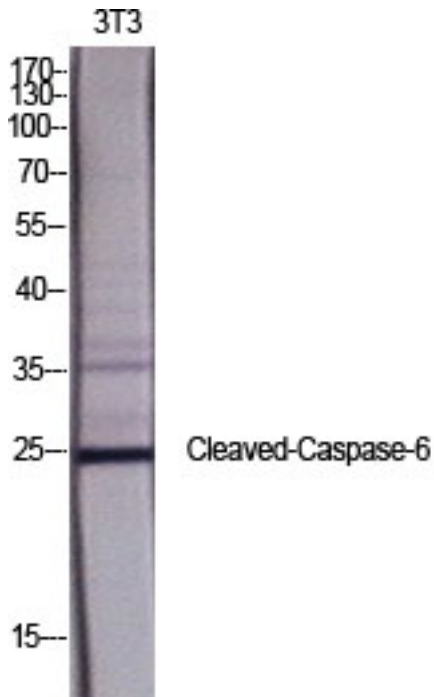
网址: www.njbybio.com

官方热线: 025-5229-8998

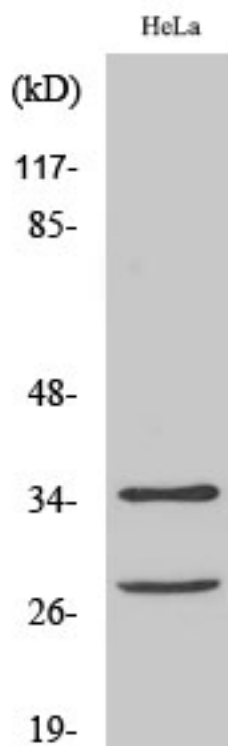
监督电话: 15950492658



Products Images



Western Blot analysis of various cells using
Cleaved-Caspase-6 p18 (D162) Polyclonal Antibody
diluted at 1:1000



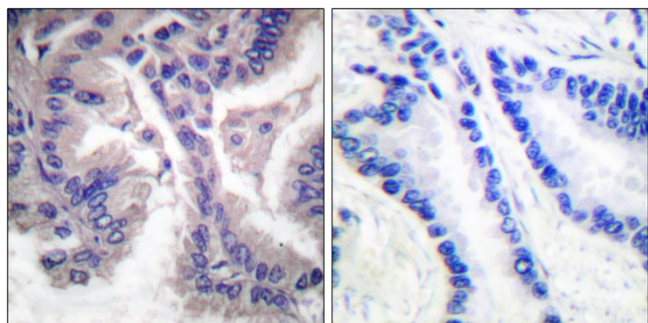
Western Blot analysis of HeLa cells using
Cleaved-Caspase-6 p18 (D162) Polyclonal Antibody
diluted at 1:1000

Nanjing BYabs science technology Co.,Ltd

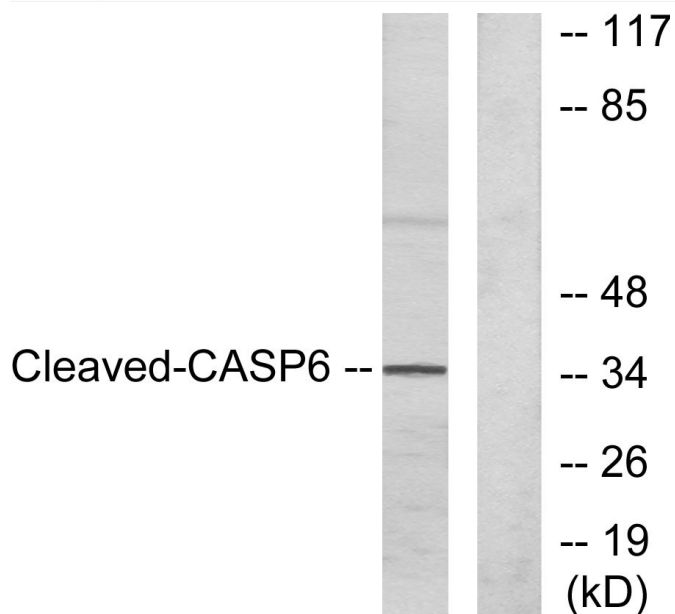
网址: www.njbybio.com

官方热线: 025-5229-8998

监督电话: 15950492658



Immunohistochemistry analysis of paraffin-embedded human lung carcinoma tissue, using Caspase 6 (Cleaved-Asp162) Antibody. The picture on the right is blocked with the synthesized peptide.



Western blot analysis of lysates from HeLa cells, treated with Etoposide 25uM 60', using Caspase 6 (Cleaved-Asp162) Antibody. The lane on the right is blocked with the synthesized peptide.



Cleaved-(