



Ku70 mouse mAb

Catalog No	BYab-00100
Isotype	IgG
Reactivity	Human;Monkey
Applications	WB;ICC;IP
Gene Name	xrcc6
Protein Name	
Immunogen	Purified recombinant human Ku70 protein fragments expressed in E.coli.
Specificity	This antibody detects endogenous levels of Ku70 and does not cross-react with related proteins.
Formulation	Liquid in PBS containing 50% glycerol, 0.5% BSA and 0.02% sodium azide.
Source	Monoclonal, Mouse
Purification	The antibody was affinity-purified from mouse ascites by affinity-chromatography using epitope-specific immunogen.
Dilution	wb dilution 1:1000 icc dilution 1:200
Concentration	1 mg/ml
Purity	≥90%
Storage Stability	-20°C/1 year
Synonyms	5"-deoxyribose-5-phosphate lyase Ku70;5"-dRP lyase Ku70;70 kDa subunit of Ku antigen; ATP dependent DNA helicase 2 subunit 1;ATP dependent DNA helicase II 70 kDa subunit;ATP-dependent DNA helicase 2 subunit 1;ATP-dependent DNA helicase II 70 kDa subunit;CTC box binding factor 75 kDa subunit;CTC box-binding factor 75 kDa subunit;CTC75;CTCBF;CTCBF; DNA repair protein XRCC6;G22P1;Ku 70;Ku autoantigen 70kDa;Ku autoantigen p70 subunit;Ku autoantigen, 70kDa;Ku p70;Ku70;Ku70 DNA binding component of DNA-dependent proteinkinase complex (thyroid autoantigen 70 kDa;Kup70;Lupus Ku autoantigen protein p70;ML8;Thyroid autoantigen 70kD (Ku antigen);Thyroid autoantigen;Thyroid lupus autoantigen;Thyroid lupus autoantigen;Thyroid lupus autoantigen p70;Thyroid-lupus autoantigen;TLAA;TLAA;X ray repair complementing defective repair in Chinese hamster cells 6;X-ray repair complementing defective repair in Chinese hamster cells 6;X-ray repair cross-complementing protein 6;XRCC 6;XRCC6;XRCC6_HUMAN.

Nanjing BYabscience technology Co.,Ltd



Observed Band	67kD
Cell Pathway	Nucleus . Chromosome .
Tissue Specificity	Brain,Cervix carcinoma,Epithelium,Heart,Hepatocyte,Kidney,Liver,Lun
Function	developmental stage:Expression does not increase during promyelocyte differentiation.,disease:Individuals with systemic lupus erythematosus (SLE) and related disorders produce extremely large amounts of autoantibodies to p70 and p86. Existence of a major autoantigenic epitope or epitopes on the C-terminal 190 amino acids of p70 containing the leucine repeat. The majority of autoantibodies to p70 in most sera from patients with SLE seem to be reactive with this region.,function:Single stranded DNA-dependent ATP-dependent helicase. Has a role in chromosome translocation. The DNA helicase II complex binds preferentially to fork-like ends of double-stranded DNA in a cell cycle-dependent manner. It works in the 3'-5' direction. Binding to DNA may be mediated by p70. Involved in DNA nonhomologous end joining (NHEJ) required for double-strand break repair and V(D)J recombination. The Ku p70/p86
Background	The p70/p80 autoantigen is a nuclear complex consisting of two subunits with molecular masses of approximately 70 and 80 kDa. The complex functions as a single-stranded DNA-dependent ATP-dependent helicase. The complex may be involved in the repair of nonhomologous DNA ends such as that required for double-strand break repair, transposition, and V(D)J recombination. High levels of autoantibodies to p70 and p80 have been found in some patients with systemic lupus erythematosus. [provided by RefSeq, Jul 2008],
matters needing attention	Avoid repeated freezing and thawing!
Usage suggestions	This product can be used in immunological reaction related experiments. For more information, please consult technical personnel.

Nanjing BYabscience technology Co.,Ltd

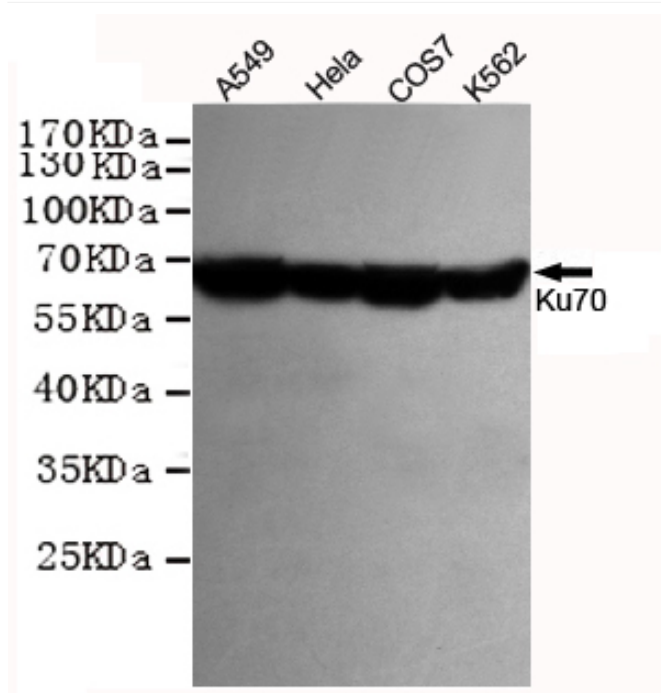
网址: www.njbybio.com

官方热线: 025-5229-8998

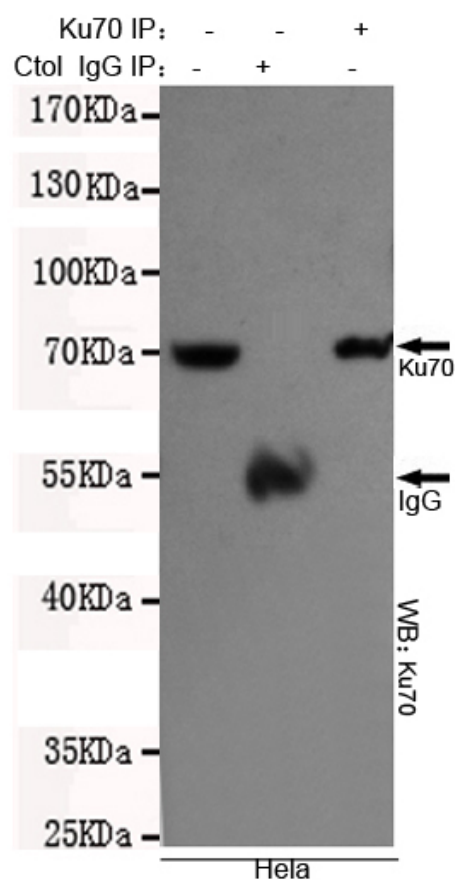
监督电话: 15950492658



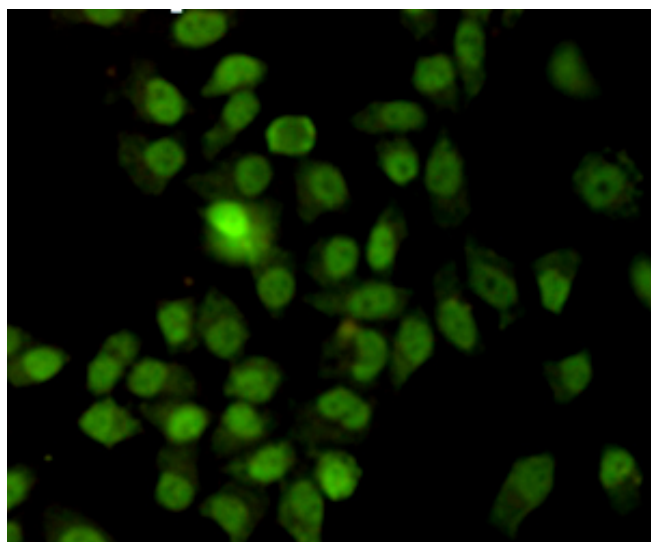
Products Images



Western blot detection of Ku70 in HeLa, A549, COS7 and K562 cell lysates using Ku70 mouse mAb (1:1000 diluted). Predicted band size: 70 kDa. Observed band size: 67 kDa.



Immunocytochemistry staining of HeLa cells fixed with -20°C Methanol and using anti-Ku70 antibody (dilution 1:200).



Immunoprecipitation analysis of HeLa cell lysates using Ku70 mouse mAb.