



XRCC1 mouse mAb

Catalog No	BYab-00105
Isotype	IgG
Reactivity	Human
Applications	WB
Gene Name	xrcc1
Protein Name	
Immunogen	Purified recombinant human XRCC1 protein fragments expressed in E.coli.
Specificity	This antibody detects endogenous levels of XRCC1 and does not cross-react with related proteins.
Formulation	Liquid in PBS containing 50% glycerol, 0.5% BSA and 0.02% sodium azide.
Source	Monoclonal, Mouse
Purification	The antibody was affinity-purified from mouse ascites by affinity-chromatography using epitope-specific immunogen.
Dilution	wb dilution 1:1000
Concentration	1 mg/ml
Purity	≥90%
Storage Stability	-20°C/1 year
Synonyms	DNA repair protein XRCC1;RCC;X ray repair complementing defective repair in chinese hamster;X ray repair complementing defective repair in chinese hamster cells 1;X ray Repair Complementing Defective Repair in Chinese Hamster Cells;X ray repair cross complementing protein 1;X ray repair, complementing defective, repair in Chinese hamster;X-ray repair cross-complementing protein 1;XRCC 1;Xrcc1;XRCC1_HUMAN.
Observed Band	82kD
Cell Pathway	Nucleus . Moves from the nucleoli to the global nuclear chromatin upon DNA damage. .
Tissue Specificity	Expressed in fibroblasts, retinal pigmented epithelial cells and lymphoblastoid cells (at protein level).
Function	function:Corrects defective DNA strand-break repair and sister chromatid exchange following treatment with ionizing radiation and alkylating agents.,polymorphism:Carriers of the polymorphic Gln-399 allele may be at greater risk for tobacco- and age-related DNA damage.,PTM:Phosphorylation of Ser-371 causes dimer dissociation. Phosphorylation by CK2 promotes interaction

Nanjing BYabscience technology Co.,Ltd



with APTX and APLF.,PTM:Sumoylated.,similarity:Contains 2 BRCT domains.,subcellular location:Accumulates at sites of DNA damage.,subunit:Homodimer. Interacts with polynucleotide kinase (PNK), DNA polymerase-beta (POLB) and DNA ligase III (LIG3). Interacts with APTX and APLF.,

Background

The protein encoded by this gene is involved in the efficient repair of DNA single-strand breaks formed by exposure to ionizing radiation and alkylating agents. This protein interacts with DNA ligase III, polymerase beta and poly (ADP-ribose) polymerase to participate in the base excision repair pathway. It may play a role in DNA processing during meogenesis and recombination in germ cells. A rare microsatellite polymorphism in this gene is associated with cancer in patients of varying radiosensitivity. [provided by RefSeq, Jul 2008],

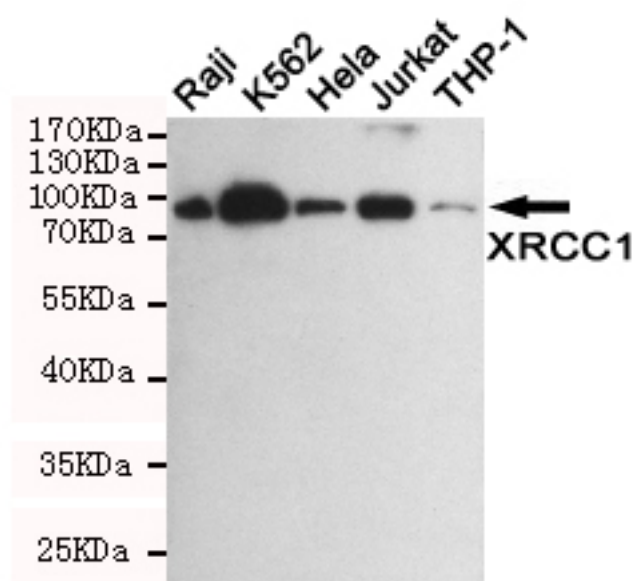
matters needing attention

Avoid repeated freezing and thawing!

Usage suggestions

This product can be used in immunological reaction related experiments. For more information, please consult technical personnel.

Products Images



Western blot detection of XRCC1 in Raji,K562,HeLa,Jurkat and THP-1 cell lysates using XRCC1 mouse mAb (1:1000 diluted).Predicted band size:82KDa.Observed band size:82KDa.

Nanjing BYabs science technology Co.,Ltd

网址: www.njbybio.com

官方热线: 025-5229-8998

监督电话: 15950492658