



Bcl-2 (phospho Ser70) Polyclonal Antibody

Catalog No	BYab-00142
Isotype	IgG
Reactivity	Human;Monkey
Applications	WB;IHC;IF;IP;ELISA
Gene Name	BCL2
Protein Name	Apoptosis regulator Bcl-2
Immunogen	The antiserum was produced against synthesized peptide derived from human BCL-2 around the phosphorylation site of Ser70. AA range:41-90
Specificity	Phospho-Bcl-2 (S70) Polyclonal Antibody detects endogenous levels of Bcl-2 protein only when phosphorylated at S70.
Formulation	Liquid in PBS containing 50% glycerol, 0.5% BSA and 0.02% sodium azide.
Source	Polyclonal, Rabbit,IgG
Purification	The antibody was affinity-purified from rabbit antiserum by affinity-chromatography using epitope-specific immunogen.
Dilution	WB: 1/500 - 1/2000. IHC: 1/100 - 1/300. Immunoprecipitation: 2-5 ug/mg lysate. ELISA: 1/10000.. IF 1:50-200
Concentration	1 mg/ml
Purity	≥90%
Storage Stability	-20°C/1 year
Synonyms	BCL2; Apoptosis regulator Bcl-2
Observed Band	26kD
Cell Pathway	Mitochondrion outer membrane ; Single-pass membrane protein . Nucleus membrane ; Single-pass membrane protein . Endoplasmic reticulum membrane ; Single-pass membrane protein . Cytoplasm .
Tissue Specificity	Expressed in a variety of tissues.
Function	disease:A chromosomal aberration involving BCL2 may be a cause of follicular lymphoma (FL) [MIM:151430]; also known as type II chronic lymphatic leukemia. Translocation t(14;18)(q32;q21) with immunoglobulin gene regions. BCL2 mutations found in non-Hodgkin lymphomas carrying the chromosomal translocation could be attributed to the Ig somatic hypermutation mechanism resulting in nucleotide transitions.,domain:The BH4 motif is required for anti-apoptotic activity and for interaction with RAF-1.,function:Suppresses apoptosis in a variety of cell systems including factor-dependent lymphohematopoietic and neural cells. Regulates cell death by controlling the

Nanjing BYabscience technology Co.,Ltd



	mitochondrial membrane permeability. Appears to function in a feedback loop system with caspases. Inhibits caspase activity either by preventing the release of cytochrome c from the mitochondria and/or by binding to the apoptosis-activati
Background	BCL2, apoptosis regulator(BCL2) Homo sapiens This gene encodes an integral outer mitochondrial membrane protein that blocks the apoptotic death of some cells such as lymphocytes. Constitutive expression of BCL2, such as in the case of translocation of BCL2 to Ig heavy chain locus, is thought to be the cause of follicular lymphoma. Alternative splicing results in multiple transcript variants. [provided by RefSeq, Feb 2016],
matters needing attention	Avoid repeated freezing and thawing!
Usage suggestions	This product can be used in immunological reaction related experiments. For more information, please consult technical personnel.

Nanjing BYabscience technology Co.,Ltd

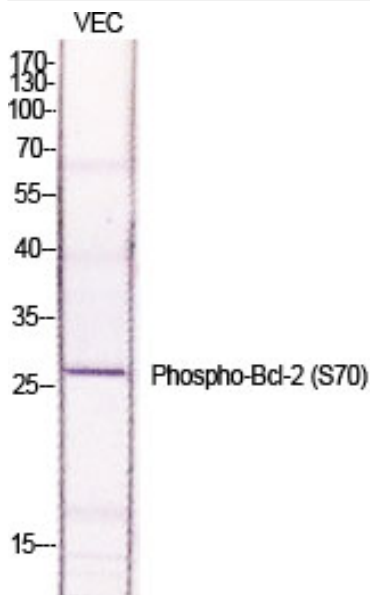
网址: www.njbybio.com

官方热线: 025-5229-8998

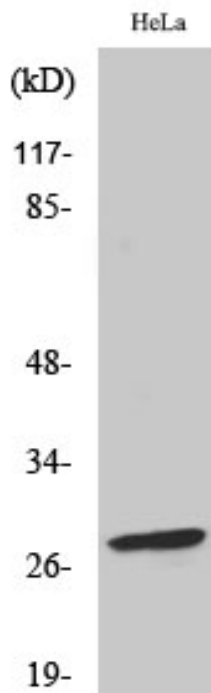
监督电话: 15950492658



Products Images



Western Blot analysis of various cells using
Phospho-Bcl-2 (S70) Polyclonal Antibody diluted at
1:1000



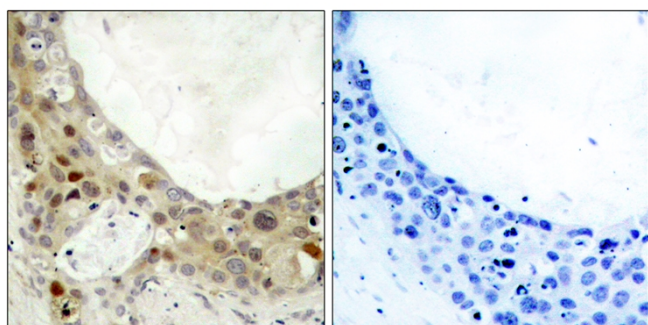
Western Blot analysis of HeLa cells using
Phospho-Bcl-2 (S70) Polyclonal Antibody diluted at
1:1000

Nanjing BYabs science technology Co.,Ltd

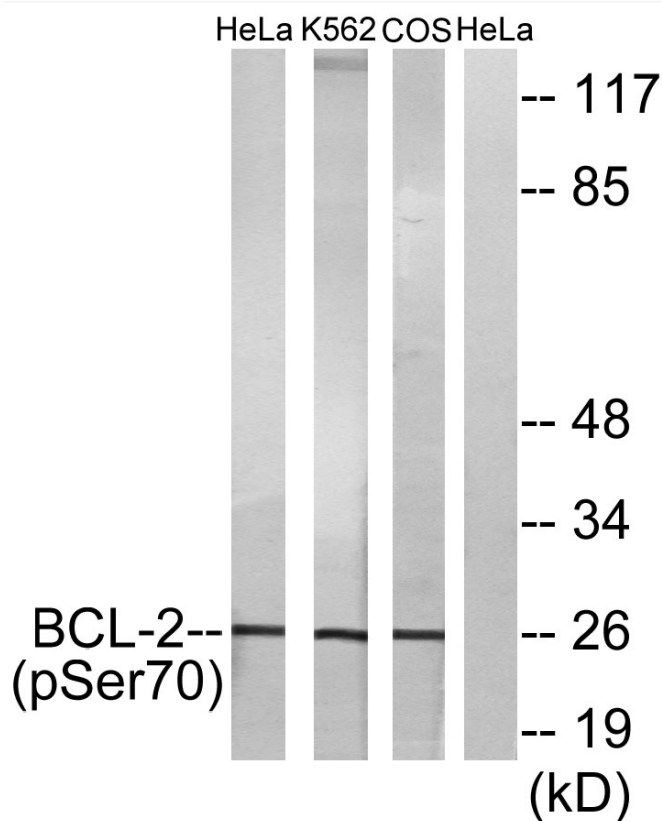
网址: www.njbybio.com

官方热线: 025-5229-8998

监督电话: 15950492658



Immunohistochemistry analysis of paraffin-embedded human breast carcinoma, using BCL-2 (Phospho-Ser70) Antibody. The picture on the right is blocked with the phospho peptide.



Western blot analysis of lysates from HeLa cells treated with LPS (40nM, 30mins), K562 cells treated with calyculin A (50ng/ml, 30mins) and COS-7 cells treated with H₂O₂ (1ng/ml, 15mins), using BCL-2 (Phospho-Ser70) Antibody. The lane on the right is blocked with the phospho peptide.