



Pdcd-4 (phospho Ser457) Polyclonal Antibody

Catalog No	BYab-00208
Isotype	IgG
Reactivity	Human;Mouse;Rat
Applications	WB;IHC;IF;ELISA
Gene Name	PDCD4
Protein Name	Programmed cell death protein 4
Immunogen	The antiserum was produced against synthesized peptide derived from human PDCD4 around the phosphorylation site of Ser457. AA range:420-469
Specificity	Phospho-Pdcd-4 (S457) Polyclonal Antibody detects endogenous levels of Pdcd-4 protein only when phosphorylated at S457.
Formulation	Liquid in PBS containing 50% glycerol, 0.5% BSA and 0.02% sodium azide.
Source	Polyclonal, Rabbit,IgG
Purification	The antibody was affinity-purified from rabbit antiserum by affinity-chromatography using epitope-specific immunogen.
Dilution	WB: 1/500 - 1/2000. IHC: 1/100 - 1/300. ELISA: 1/10000.. IF 1:50-200
Concentration	1 mg/ml
Purity	≥90%
Storage Stability	-20°C/1 year
Synonyms	PDCD4; H731; Programmed cell death protein 4; Neoplastic transformation inhibitor protein; Nuclear antigen H731-like; Protein 197/15a
Observed Band	51kD
Cell Pathway	Nucleus . Cytoplasm . Shuttles between the nucleus and cytoplasm (By similarity). Predominantly nuclear under normal growth conditions, and when phosphorylated at Ser-457 (PubMed:16357133). .
Tissue Specificity	Up-regulated in proliferative cells. Highly expressed in epithelial cells of the mammary gland. Reduced expression in lung cancer and colon carcinoma.
Function	caution:The sequence shown here is derived from an Ensembl automatic analysis pipeline and should be considered as preliminary data.,disease:Loss of expression correlated with tumor progression of lung and colon carcinoma.,domain:Binds EIF4A1 via the MA3 domains.,function:Tumor suppressor. Inhibits tumor promoter-induced neoplastic transformation. Down-regulates the expression of MAP4K1, thus inhibiting events important in driving invasion, namely, MAPK85 activation and consequent JUN-dependent transcription. May play a role in apoptosis. Inhibits the helicase activity of EIF4A and cap-dependent translation. Binds RNA.,induction:IL2 stimulation inhibits

Nanjing BYabscience technology Co.,Ltd



expression, while IL12 increases expression.,sequence caution:Contaminating sequence. Potential poly-A sequence.,similarity:Belongs to the PD4 family.,similarity:Contains 2 MI domains.,subcellular location:Shuttles between the nucleus a

Background

This gene is a tumor suppressor and encodes a protein that binds to the eukaryotic translation initiation factor 4A1 and inhibits its function by preventing RNA binding. Alternative splicing results in multiple transcript variants. [provided by RefSeq, Dec 2010],

matters needing attention

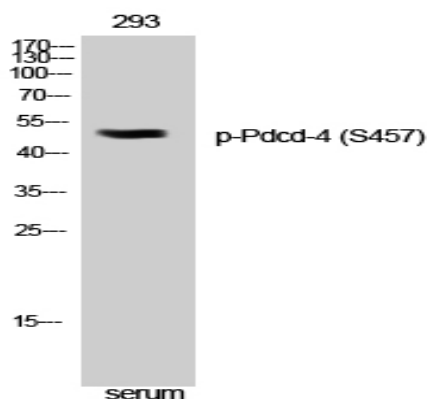
Avoid repeated freezing and thawing!

Usage suggestions

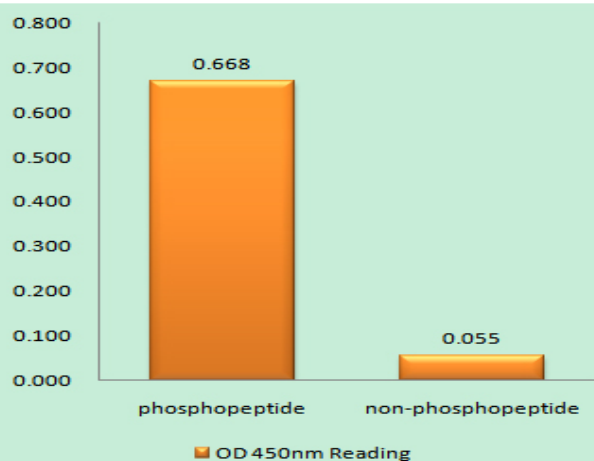
This product can be used in immunological reaction related experiments. For more information, please consult technical personnel.



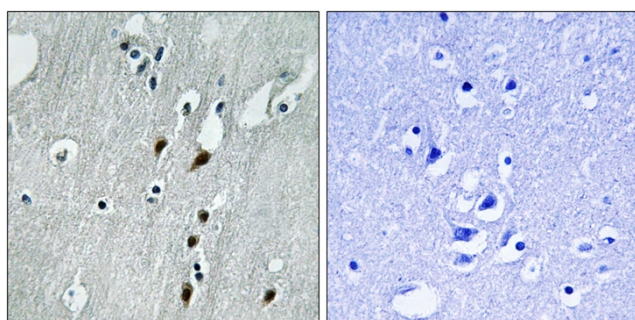
Products Images



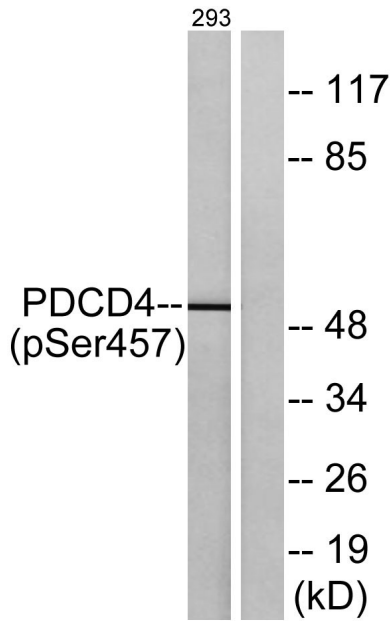
Western Blot analysis of 293 cells using Phospho-Pdcd-4 (S457) Polyclonal Antibody



Enzyme-Linked Immunosorbent Assay (Phospho-ELISA) for Immunogen Phosphopeptide (Phospho-left) and Non-Phosphopeptide (Phospho-right), using PDCD4 (Phospho-Ser457) Antibody



Immunohistochemistry analysis of paraffin-embedded human brain, using PDCD4 (Phospho-Ser457) Antibody. The picture on the right is blocked with the phospho peptide.



Western blot analysis of lysates from 293 cells treated with serum 20% 15', using PDCD4 (Phospho-Ser457) Antibody. The lane on the right is blocked with the phospho peptide.