



BAP31 Polyclonal Antibody

Catalog No	BYab-00315
Isotype	IgG
Reactivity	Human;Mouse;Rat
Applications	WB;ELISA
Gene Name	BCAP31
Protein Name	B-cell receptor-associated protein 31
Immunogen	The antiserum was produced against synthesized peptide derived from human BAP31. AA range:151-200
Specificity	BAP31 Polyclonal Antibody detects endogenous levels of BAP31 protein.
Formulation	Liquid in PBS containing 50% glycerol, 0.5% BSA and 0.02% sodium azide.
Source	Polyclonal, Rabbit,IgG
Purification	The antibody was affinity-purified from rabbit antiserum by affinity-chromatography using epitope-specific immunogen.
Dilution	Western Blot: 1/500 - 1/2000. ELISA: 1/40000. Not yet tested in other applications.
Concentration	1 mg/ml
Purity	≥90%
Storage Stability	-20°C/1 year
Synonyms	BCAP31; BAP31; DXS1357E; B-cell receptor-associated protein 31; BCR-associated protein 31; Bap31; 6C6-AG tumor-associated antigen; Protein CDM; p28
Observed Band	28kD
Cell Pathway	Endoplasmic reticulum membrane ; Multi-pass membrane protein . Endoplasmic reticulum-Golgi intermediate compartment membrane ; Multi-pass membrane protein . May shuttle between the ER and the intermediate compartment/cis-Golgi complex (PubMed:9396746). Associates with the mitochondria-associated endoplasmic reticulum membrane via interaction with TOMM40 (PubMed:31206022). .
Tissue Specificity	Ubiquitous. Highly expressed in neurons and discrete endocrine cells.
Function	disease:Microdeletions in BCAP31 are involved in the contiguous ABCD1/DXS1375E deletion syndrome (CADD5) [MIM:300475]. Patients manifest profound neonatal hypotonia, subsequent failure to thrive, and cholestatic liver disease.,function:May play a role in anterograde transport of membrane proteins

Nanjing BYabscience technology Co.,Ltd



from the endoplasmic reticulum to the Golgi. May be involved in CASP8-mediated apoptosis.,PTM:Cleaved by CASP8 and other caspases.,similarity:Belongs to the BCAP29/BCAP31 family.,subcellular location:May shuttle between the ER and the intermediate compartment/cis-Golgi complex.,subunit:Homodimer and heterodimer with BCAP29. Binds CASP8 (isoform 9) as a complex containing BCAP31, BCAP29, BCL2 and/or BCL2L1. Interacts with VAMP3, VAMP1 and membrane IgD immunoglobulins. May interact with ACTG1 and non-muscle myosin II. Interacts with PTPLB.,tissue specificity:Ubiquitous.,

Background

This gene encodes a member of the B-cell receptor associated protein 31 superfamily. The encoded protein is a multi-pass transmembrane protein of the endoplasmic reticulum that is involved in the anterograde transport of membrane proteins from the endoplasmic reticulum to the Golgi and in caspase 8-mediated apoptosis. Microdeletions in this gene are associated with contiguous ABCD1/DXS1375E deletion syndrome (CADD5), a neonatal disorder. Alternative splicing of this gene results in multiple transcript variants. Two related pseudogenes have been identified on chromosome 16. [provided by RefSeq, Jan 2012],

matters needing attention

Avoid repeated freezing and thawing!

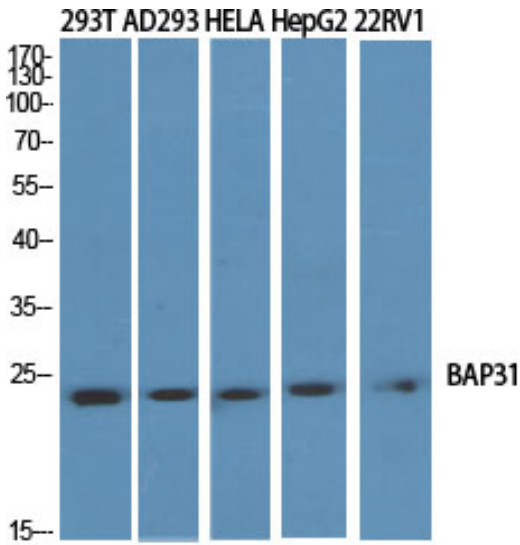
Usage suggestions

This product can be used in immunological reaction related experiments. For more information, please consult technical personnel.

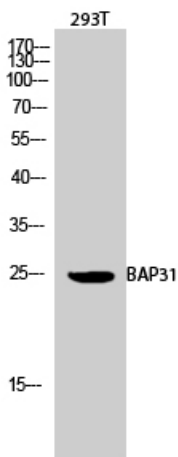
Nanjing BYabscience technology Co.,Ltd



Products Images



Western Blot analysis of various cells using BAP31
Polyclonal Antibody diluted at 1:2000



Western Blot analysis of 293T cells using BAP31
Polyclonal Antibody diluted at 1:2000