



CAGE-1 Polyclonal Antibody

Catalog No	BYab-00340
Isotype	IgG
Reactivity	Human;Rat;Mouse;
Applications	WB;IHC;IF;ELISA
Gene Name	CAGE1
Protein Name	Cancer-associated gene 1 protein
Immunogen	The antiserum was produced against synthesized peptide derived from human CAGE1. AA range:711-760
Specificity	CAGE-1 Polyclonal Antibody detects endogenous levels of CAGE-1 protein.
Formulation	Liquid in PBS containing 50% glycerol, 0.5% BSA and 0.02% sodium azide.
Source	Polyclonal, Rabbit,IgG
Purification	The antibody was affinity-purified from rabbit antiserum by affinity-chromatography using epitope-specific immunogen.
Dilution	WB: 1/500 - 1/2000. IHC: 1/100 - 1/300. ELISA: 1/40000.. IF 1:50-200
Concentration	1 mg/ml
Purity	≥90%
Storage Stability	-20°C/1 year
Synonyms	CAGE1; CTAG3; Cancer-associated gene 1 protein; CAGE-1; Cancer/testis antigen 3; CT3
Observed Band	90kD
Cell Pathway	
Tissue Specificity	Testis-specific expression in normal tissues, but wide expression among cancer tissues and cell lines.
Function	tissue specificity:Testis-specific expression in normal tissues, but wide expression among cancer tissues and cell lines.,
Background	tissue specificity:Testis-specific expression in normal tissues, but wide expression among cancer tissues and cell lines.,
matters needing attention	Avoid repeated freezing and thawing!

Nanjing BYabscience technology Co.,Ltd

网址: www.njbybio.com

官方热线: 025-5229-8998

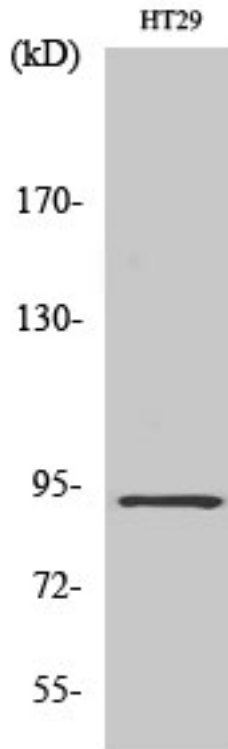
监督电话: 15950492658



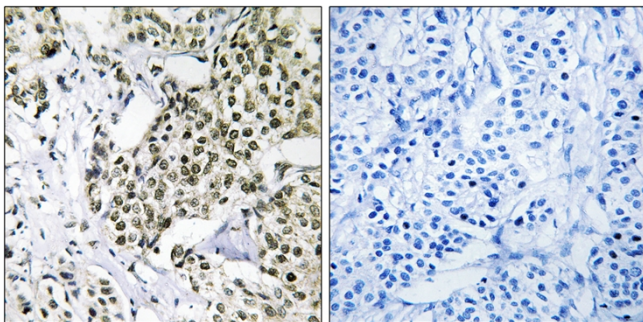
Usage suggestions

This product can be used in immunological reaction related experiments. For more information, please consult technical personnel.

Products Images



Western Blot analysis of various cells using CAGE-1 Polyclonal Antibody diluted at 1:2000



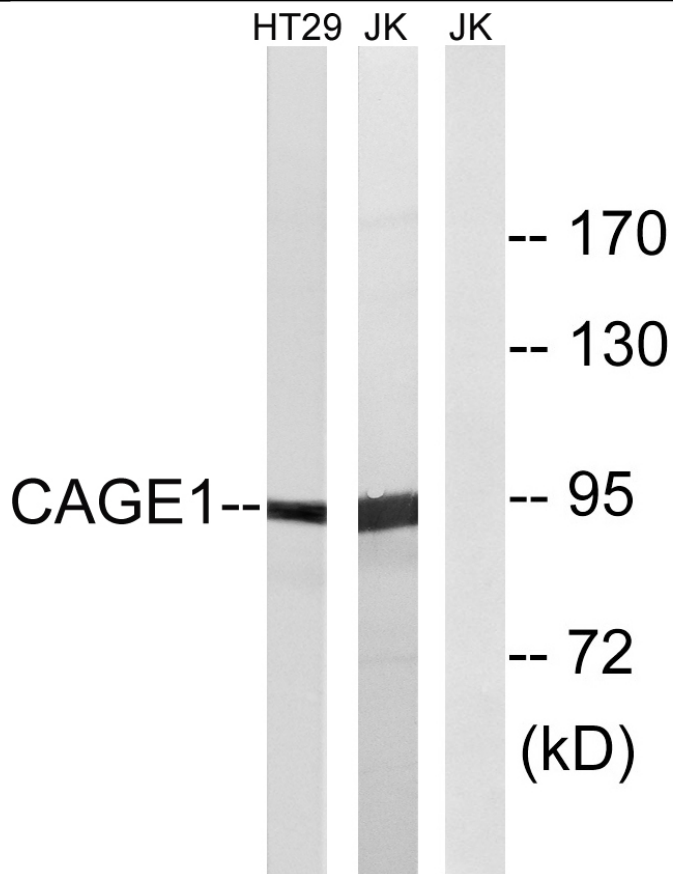
Immunohistochemistry analysis of paraffin-embedded human breast carcinoma tissue, using CAGE1 Antibody. The picture on the right is blocked with the synthesized peptide.

Nanjing BYabs science technology Co.,Ltd

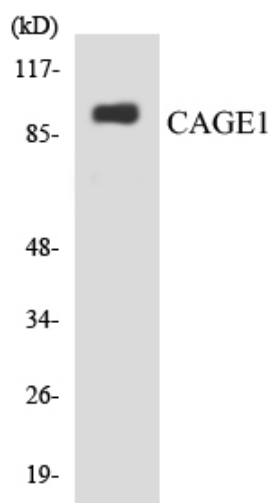
网址: www.njbybio.com

官方热线: 025-5229-8998

监督电话: 15950492658



Western blot analysis of lysates from HT-29 and Jurkat cells, using CAGE1 Antibody. The lane on the right is blocked with the synthesized peptide.



Western blot analysis of the lysates from HepG2 cells using CAGE1 antibody.