



Dmc1 Polyclonal Antibody

Catalog No	BYab-00377
Isotype	IgG
Reactivity	Human;Mouse
Applications	IHC;IF;ELISA
Gene Name	DMC1
Protein Name	Meiotic recombination protein DMC1/LIM15 homolog
Immunogen	The antiserum was produced against synthesized peptide derived from human DMC1. AA range:61-110
Specificity	Dmc1 Polyclonal Antibody detects endogenous levels of Dmc1 protein.
Formulation	Liquid in PBS containing 50% glycerol, 0.5% BSA and 0.02% sodium azide.
Source	Polyclonal, Rabbit,IgG
Purification	The antibody was affinity-purified from rabbit antiserum by affinity-chromatography using epitope-specific immunogen.
Dilution	IHC: 1/100 - 1/300. ELISA: 1/10000.. IF 1:50-200
Concentration	1 mg/ml
Purity	≥90%
Storage Stability	-20°C/1 year
Synonyms	DMC1; DMC1H; LIM15; Meiotic recombination protein DMC1/LIM15 homolog
Observed Band	
Cell Pathway	Nucleus . Chromosome .
Tissue Specificity	Ovary,Testis,Thymus,
Function	function:May participate in meiotic recombination, specifically in homologous strand assimilation, which is required for the resolution of meiotic double-strand breaks.,similarity:Belongs to the recA family. DMC1 subfamily.,similarity:Contains 1 HhH domain.,subunit:Interacts with the MND1-PSMC3IP heterodimer (By similarity). Double stacked ring-shaped homooctamer.,
Background	DNA meiotic recombinase 1(DMC1) Homo sapiens This gene encodes a member of the superfamily of recombinases (also called DNA strand-exchange proteins). Recombinases are important for repairing double-strand DNA breaks during mitosis and meiosis. This protein, which is evolutionarily conserved, is reported to be essential for meiotic homologous recombination and may thus play

Nanjing BYabscience technology Co.,Ltd



an important role in generating diversity of genetic information. Alternative splicing results in multiple transcript variants. [provided by RefSeq, May 2013],

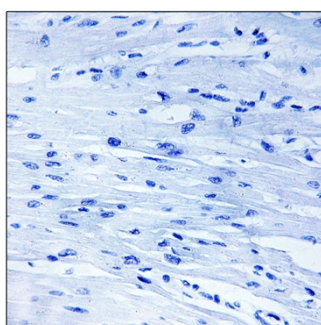
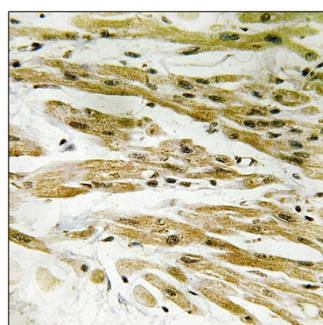
matters needing attention

Avoid repeated freezing and thawing!

Usage suggestions

This product can be used in immunological reaction related experiments. For more information, please consult technical personnel.

Products Images



Immunohistochemistry analysis of paraffin-embedded human heart tissue, using DMC1 Antibody. The picture on the right is blocked with the synthesized peptide.