



GADD 45γ Polyclonal Antibody

| | |
|---------------------------|--|
| Catalog No | BYab-00402 |
| Isotype | IgG |
| Reactivity | Human;Mouse;Rat |
| Applications | WB;IHC;IF;ELISA |
| Gene Name | GADD45G |
| Protein Name | Growth arrest and DNA damage-inducible protein GADD45 gamma |
| Immunogen | The antiserum was produced against synthesized peptide derived from human GA45G. AA range:101-150 |
| Specificity | GADD 45γ Polyclonal Antibody detects endogenous levels of GADD 45γ protein. |
| Formulation | Liquid in PBS containing 50% glycerol, 0.5% BSA and 0.02% sodium azide. |
| Source | Polyclonal, Rabbit,IgG |
| Purification | The antibody was affinity-purified from rabbit antiserum by affinity-chromatography using epitope-specific immunogen. |
| Dilution | Western Blot: 1/500 - 1/2000. Immunohistochemistry: 1/100 - 1/300. Immunofluorescence: 1/200 - 1/1000. ELISA: 1/5000. Not yet tested in other applications. |
| Concentration | 1 mg/ml |
| Purity | ≥90% |
| Storage Stability | -20°C/1 year |
| Synonyms | GADD45G; CR6; DDIT2; Growth arrest and DNA damage-inducible protein GADD45 gamma; Cytokine-responsive protein CR6; DNA damage-inducible transcript 2 protein; DDIT-2 |
| Observed Band | 19kD |
| Cell Pathway | nucleus,cytoplasm, |
| Tissue Specificity | Brain,Colon carcinoma,Lung,Placenta, |
| Function | function:Involved in the regulation of growth and apoptosis. Mediates activation of stress-responsive MTK1/MEKK4 MAPKKK.,similarity:Belongs to the GADD45 family.,subunit:Interacts with GADD45GIP1., |
| Background | This gene is a member of a group of genes whose transcript levels are increased following stressful growth arrest conditions and treatment with DNA-damaging agents. The protein encoded by this gene responds to environmental stresses by mediating activation of the p38/JNK pathway via MTK1/MEKK4 kinase. The |

Nanjing BYabscience technology Co.,Ltd



GADD45G is highly expressed in placenta. [provided by RefSeq, Jul 2008],

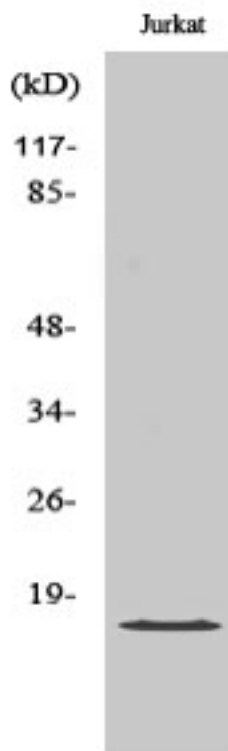
matters needing attention

Avoid repeated freezing and thawing!

Usage suggestions

This product can be used in immunological reaction related experiments. For more information, please consult technical personnel.

Products Images



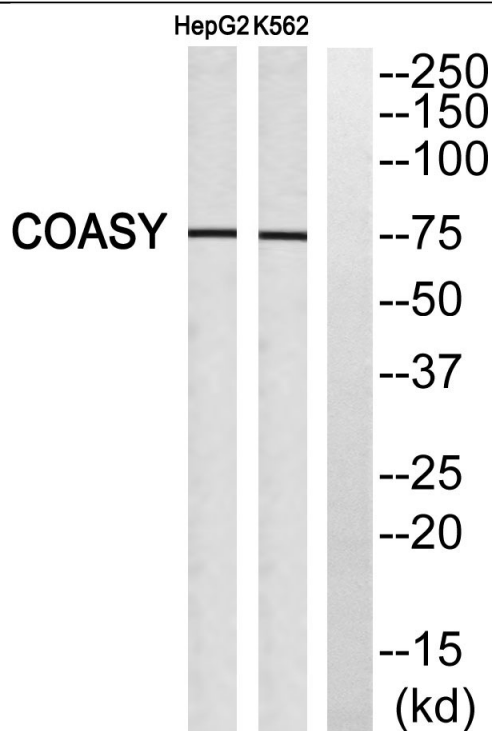
Western Blot analysis of various cells using GADD 45γ Polyclonal Antibody

Nanjing BYabs science technology Co.,Ltd

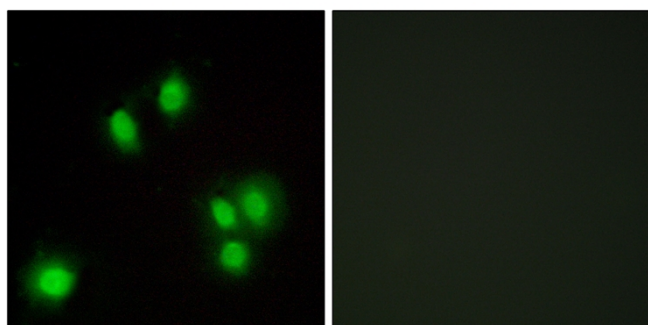
网址: www.njbybio.com

官方热线: 025-5229-8998

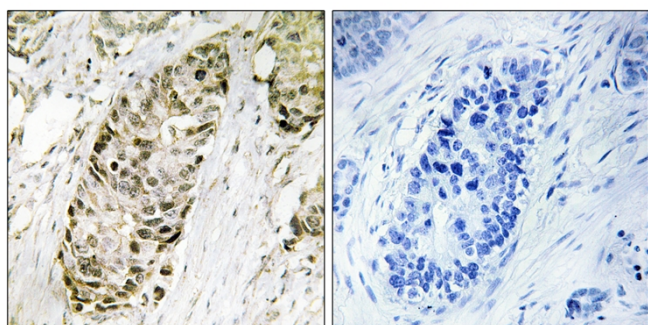
监督电话: 15950492658



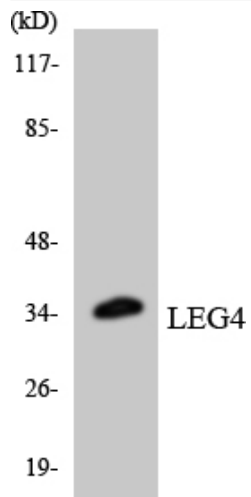
Western blot analysis of GA45G Antibody. The lane on the right is blocked with the GA45G peptide.



Immunofluorescence analysis of A549 cells, using GA45G Antibody. The picture on the right is blocked with the synthesized peptide.



Immunohistochemistry analysis of paraffin-embedded human lung carcinoma tissue, using GA45G Antibody. The picture on the right is blocked with the synthesized peptide.



Western blot analysis of the lysates from HeLa cells using LEG4 antibody.