



Galectin-4 Polyclonal Antibody

Catalog No	BYab-00405
Isotype	IgG
Reactivity	Human;Rat;Mouse;
Applications	WB;IHC;IF;ELISA
Gene Name	LGALS4
Protein Name	Galectin-4
Immunogen	The antiserum was produced against synthesized peptide derived from human LEG4. AA range:61-110
Specificity	Galectin-4 Polyclonal Antibody detects endogenous levels of Galectin-4 protein.
Formulation	Liquid in PBS containing 50% glycerol, 0.5% BSA and 0.02% sodium azide.
Source	Polyclonal, Rabbit,IgG
Purification	The antibody was affinity-purified from rabbit antiserum by affinity-chromatography using epitope-specific immunogen.
Dilution	WB: 1/500 - 1/2000. IHC: 1/100 - 1/300. ELISA: 1/20000.. IF 1:50-200
Concentration	1 mg/ml
Purity	≥90%
Storage Stability	-20°C/1 year
Synonyms	LGALS4; Galectin-4; Gal-4; Antigen NY-CO-27; L-36 lactose-binding protein; L36LBP; Lactose-binding lectin 4
Observed Band	36kD
Cell Pathway	extracellular space,cytosol,plasma membrane,
Tissue Specificity	Colon,Colon carcinoma,Gastric carcinoma,Skin,
Function	domain:Contains two homologous but distinct carbohydrate-binding domains.,function:Galectin that binds lactose and a related range of sugars. May be involved in the assembly of adherens junctions.,online information:Galectin-4,similarity:Contains 2 galectin domains.,subunit:Monomer.,
Background	The galectins are a family of beta-galactoside-binding proteins implicated in modulating cell-cell and cell-matrix interactions. The expression of this gene is restricted to small intestine, colon, and rectum, and it is underexpressed in colorectal cancer. [provided by RefSeq, Jul 2008],

Nanjing BYabscience technology Co.,Ltd

网址: www.njbybio.com

官方热线: 025-5229-8998

监督电话: 15950492658



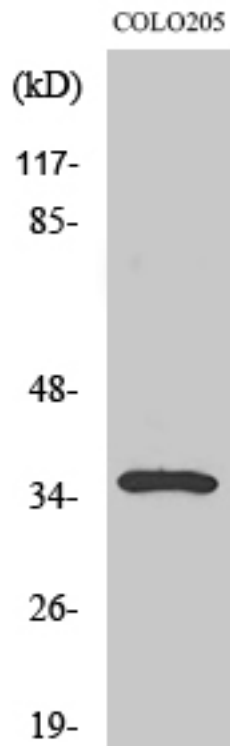
matters needing attention

Avoid repeated freezing and thawing!

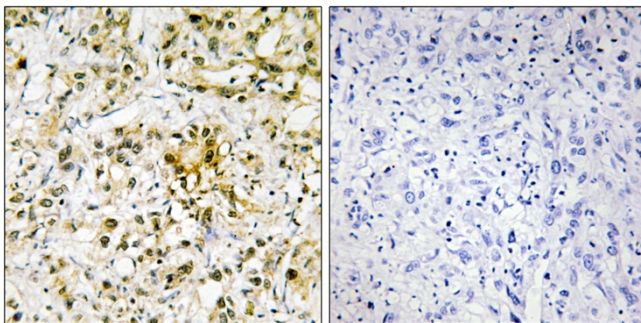
Usage suggestions

This product can be used in immunological reaction related experiments. For more information, please consult technical personnel.

Products Images



Western Blot analysis of various cells using Galectin-4 Polyclonal Antibody



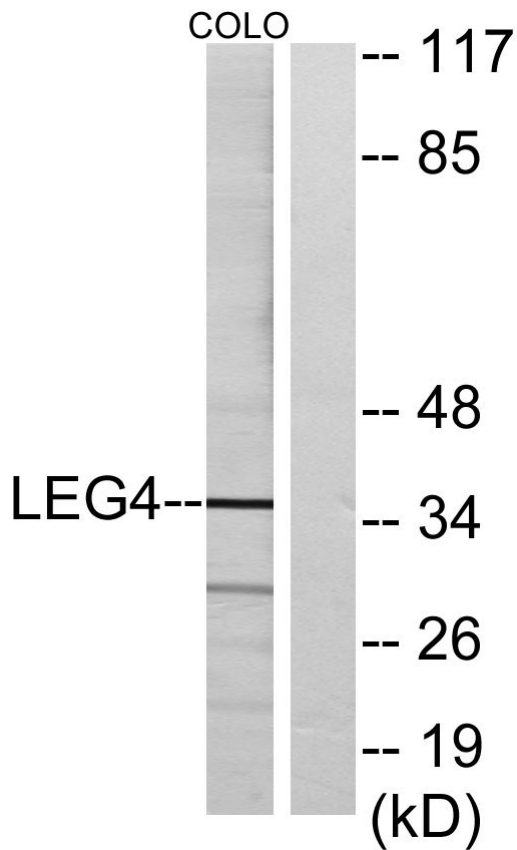
Immunohistochemistry analysis of paraffin-embedded human liver carcinoma tissue, using LEG4 Antibody. The picture on the right is blocked with the synthesized peptide.

Nanjing BYabs science technology Co.,Ltd

网址: www.njbybio.com

官方热线: 025-5229-8998

监督电话: 15950492658



Western blot analysis of lysates from COLO cells, using LEG4 Antibody. The lane on the right is blocked with the synthesized peptide.