



Galectin-7 Polyclonal Antibody

Catalog No	BYab-00406
Isotype	IgG
Reactivity	Human;Mouse;Rat
Applications	IHC;IF;WB;ELISA
Gene Name	LGALS7
Protein Name	Galectin-7
Immunogen	The antiserum was produced against synthesized peptide derived from human LEG7. AA range:41-90
Specificity	Galectin-7 Polyclonal Antibody detects endogenous levels of Galectin-7 protein.
Formulation	Liquid in PBS containing 50% glycerol, 0.5% BSA and 0.02% sodium azide.
Source	Polyclonal, Rabbit,IgG
Purification	The antibody was affinity-purified from rabbit antiserum by affinity-chromatography using epitope-specific immunogen.
Dilution	WB 1:500-2000 IHC: 1/100 - 1/300. ELISA: 1/5000.. IF 1:50-200
Concentration	1 mg/ml
Purity	≥90%
Storage Stability	-20°C/1 year
Synonyms	LGALS7; PIG1; LGALS7B; Galectin-7; Gal-7; HKL-14; PI7; p53-induced gene 1 protein
Observed Band	160kD
Cell Pathway	Cytoplasm . Nucleus . Secreted . May be secreted by a non-classical secretory pathway.
Tissue Specificity	Mainly expressed in stratified squamous epithelium.
Function	function:Could be involved in cell-cell and/or cell-matrix interactions necessary for normal growth control. Pro-apoptotic protein that functions intracellularly upstream of JNK activation and cytochrome c release.,induction:By p53.,online information:Galectin-7,similarity:Contains 1 galectin domain.,subcellular location:May be secreted by a non-classical secretory pathway.,subunit:Monomer.,tissue specificity:Mainly in stratified squamous epithelium.,
Background	The galectins are a family of beta-galactoside-binding proteins implicated in modulating cell-cell and cell-matrix interactions. Differential and in situ

Nanjing BYabscience technology Co.,Ltd



hybridization studies indicate that this lectin is specifically expressed in keratinocytes and found mainly in stratified squamous epithelium. A duplicate copy of this gene (GeneID:653499) is found adjacent to, but on the opposite strand on chromosome 19. [provided by RefSeq, Jul 2008],

matters needing attention

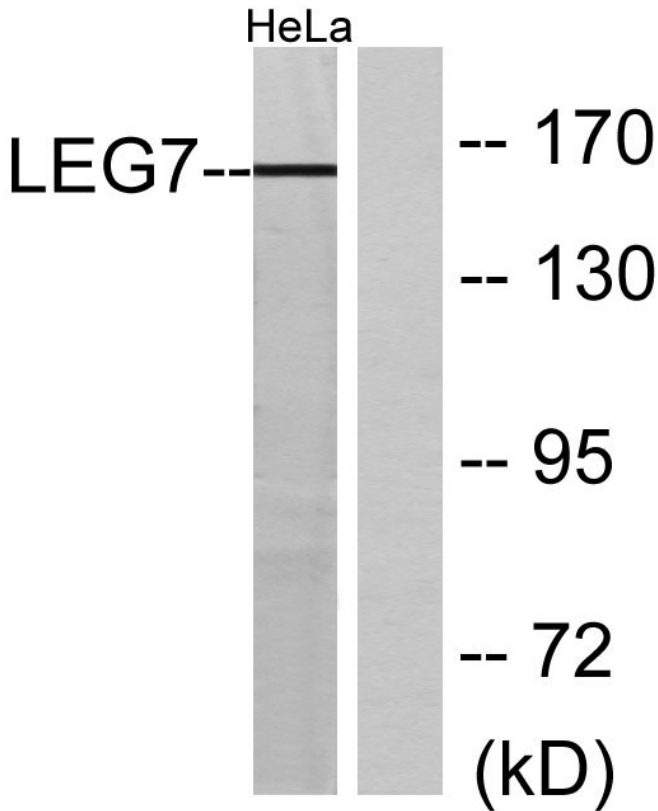
Avoid repeated freezing and thawing!

Usage suggestions

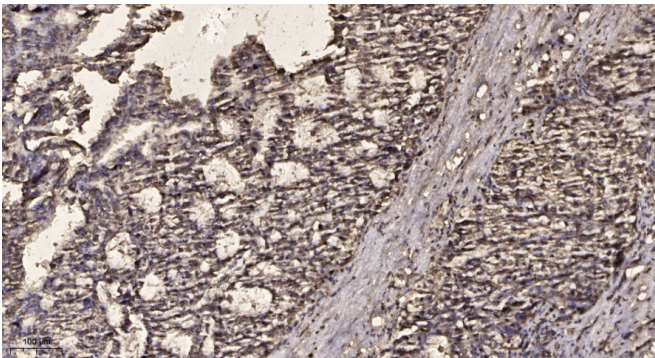
This product can be used in immunological reaction related experiments. For more information, please consult technical personnel.



Products Images



Western blot analysis of lysates from HeLa cells, using LEG7 Antibody. The lane on the right is blocked with the synthesized peptide.



Immunohistochemical analysis of paraffin-embedded human liver cancer. 1, Antibody was diluted at 1:200(4° overnight). 2, Tris-EDTA,pH9.0 was used for antigen retrieval. 3,Secondary antibody was diluted at 1:200(room temperature, 45min).

Nanjing BYabs science technology Co.,Ltd

网址: www.njbybio.com

官方热线: 025-5229-8998

监督电话: 15950492658