



# Gas8 Polyclonal Antibody

<b>Catalog No</b>	BYab-00411
<b>Isotype</b>	IgG
<b>Reactivity</b>	Human;Mouse;Rat
<b>Applications</b>	IHC;IF;WB;ELISA
<b>Gene Name</b>	GAS8
<b>Protein Name</b>	Growth arrest-specific protein 8
<b>Immunogen</b>	Synthesized peptide derived from the Internal region of human Gas8.
<b>Specificity</b>	Gas8 Polyclonal Antibody detects endogenous levels of Gas8 protein.
<b>Formulation</b>	Liquid in PBS containing 50% glycerol, 0.5% BSA and 0.02% sodium azide.
<b>Source</b>	Polyclonal, Rabbit,IgG
<b>Purification</b>	The antibody was affinity-purified from rabbit antiserum by affinity-chromatography using epitope-specific immunogen.
<b>Dilution</b>	WB 1:500-2000 IHC: 1/100 - 1/300. ELISA: 1/40000.. IF 1:50-200
<b>Concentration</b>	1 mg/ml
<b>Purity</b>	≥90%
<b>Storage Stability</b>	-20°C/1 year
<b>Synonyms</b>	GAS8; GAS11; Growth arrest-specific protein 8; GAS-8; Growth arrest-specific protein 11; GAS-11
<b>Observed Band</b>	56kD
<b>Cell Pathway</b>	Cytoplasm . Cytoplasm, cytoskeleton . Cell projection, cilium, flagellum . Cytoplasm, cytoskeleton, cilium axoneme . Cytoplasm, cytoskeleton, cilium basal body . Golgi apparatus . Cell projection, cilium . Cytoplasm, cytoskeleton, flagellum axoneme . Associates with microtubules (PubMed:10969087). Localized to the cytoplasm of round spermatids, the tails of elongating spermatids, and mature spermatid tail bundles protruding into the lumen, and in the flagellum of epididymal spermatozoa (By similarity). .
<b>Tissue Specificity</b>	Expressed in respiratory epithelial cells (at protein level) (PubMed:26387594). Expressed in the heart, skeletal muscle, pancreas, liver, brain, trachea and lung. Weakly or not expressed in placenta and kidney (PubMed:9790751).
<b>Function</b>	disease:Defects in GAS8 may be a cause of infertility in male lacking gametocytes.,function:Cytoskeletal linker which binds microtubules and probably functions in axonemal and non-axonemal dynein regulation. May play a role in the spermatozoa motility.,similarity:Belongs to the GAS8 family.,subcellular location:Associates with microtubules (By similarity). Localized to the cytoplasm

**Nanjing BYabs science technology Co.,Ltd**



of round spermatids, the tails of elongating spermatids, and mature spermatid tail bundles protruding into the lumen, and in the flagellum of epididymal spermatozoa.,tissue specificity:Expressed in the heart, skeletal muscle, pancreas and liver. Weakly or not expressed in brain, placenta, lung and kidney.,

#### Background

This gene includes 11 exons spanning 25 kb and maps to a region of chromosome 16 that is sometimes deleted in breast and prostate cancer. The second intron contains an apparently intronless gene, C16orf3, that is transcribed in the opposite orientation. This gene is a putative tumor suppressor gene. Several transcript variants encoding different isoforms have been found for this gene. [provided by RefSeq, Oct 2013],

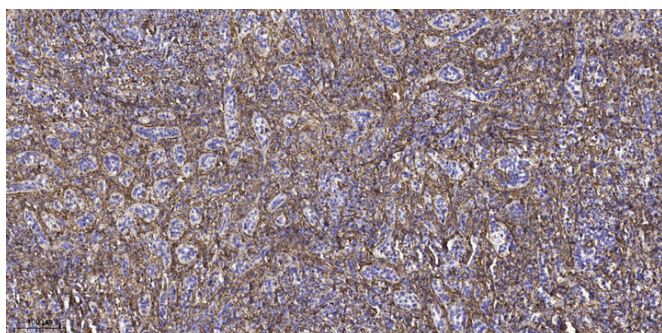
#### matters needing attention

Avoid repeated freezing and thawing!

#### Usage suggestions

This product can be used in immunological reaction related experiments. For more information, please consult technical personnel.

### Products Images



Immunohistochemical analysis of paraffin-embedded human spleen tissue. 1,primary Antibody was diluted at 1:200(4° overnight). 2, Sodium citrate pH 6.0 was used for antigen retrieval(>98°C,20min). 3,Secondary antibody was diluted at 1:200