



# GNL3L Polyclonal Antibody

<b>Catalog No</b>	BYab-00414
<b>Isotype</b>	IgG
<b>Reactivity</b>	Human;Rat;Mouse;;Cat
<b>Applications</b>	WB;IHC;IF;ELISA
<b>Gene Name</b>	GNL3L
<b>Protein Name</b>	Guanine nucleotide-binding protein-like 3-like protein
<b>Immunogen</b>	The antiserum was produced against synthesized peptide derived from human GNL3L. AA range:71-120
<b>Specificity</b>	GNL3L Polyclonal Antibody detects endogenous levels of GNL3L protein.
<b>Formulation</b>	Liquid in PBS containing 50% glycerol, 0.5% BSA and 0.02% sodium azide.
<b>Source</b>	Polyclonal, Rabbit,IgG
<b>Purification</b>	The antibody was affinity-purified from rabbit antiserum by affinity-chromatography using epitope-specific immunogen.
<b>Dilution</b>	WB: 1/500 - 1/2000. IHC: 1/100 - 1/300. ELISA: 1/5000.. IF 1:50-200
<b>Concentration</b>	1 mg/ml
<b>Purity</b>	≥90%
<b>Storage Stability</b>	-20°C/1 year
<b>Synonyms</b>	GNL3L; Guanine nucleotide-binding protein-like 3-like protein
<b>Observed Band</b>	66kD
<b>Cell Pathway</b>	Nucleus, nucleolus .
<b>Tissue Specificity</b>	Lung,Skin,
<b>Function</b>	domain:In contrast to other GTP-binding proteins, this family is characterized by a circular permutation of the GTPase motifs described by a G4-G1-G3 pattern.,function:Required for normal processing of ribosomal pre-rRNA. Required for cell proliferation. Binds GTP.,similarity:Belongs to the MMR1/HSR1 GTP-binding protein family.,
<b>Background</b>	The protein encoded by this gene appears to be a nucleolar GTPase that is essential for ribosomal pre-rRNA processing and cell proliferation. Two transcript variants encoding the same protein have been found for this gene. [provided by RefSeq, May 2010],

**Nanjing BYabscience technology Co.,Ltd**



**matters needing attention**

Avoid repeated freezing and thawing!

**Usage suggestions**

This product can be used in immunological reaction related experiments. For more information, please consult technical personnel.

Nanjing BYabscience technology Co.,Ltd

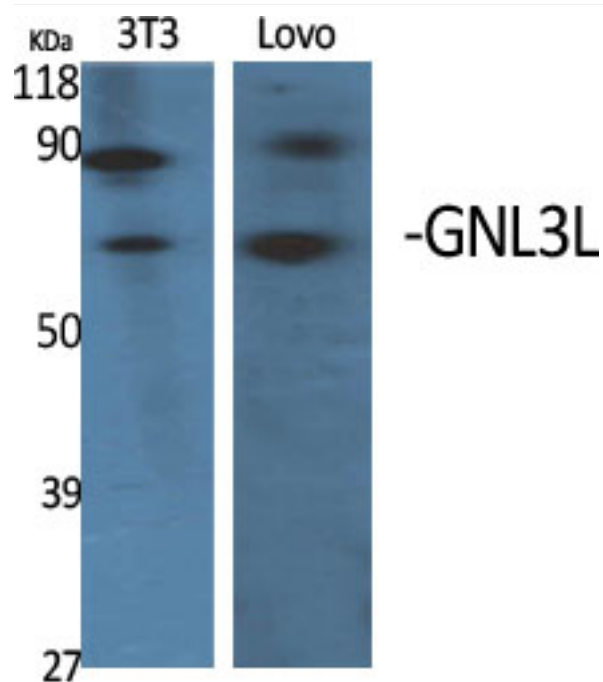
网址: [www.njbybio.com](http://www.njbybio.com)

官方热线: 025-5229-8998

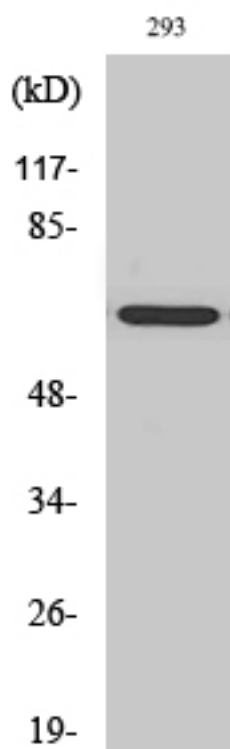
监督电话: 15950492658



## Products Images



Western Blot analysis of various cells using GNL3L Polyclonal Antibody diluted at 1:2000 cells nucleus extracted by Minute TM Cytoplasmic and Nuclear Fractionation kit (SC-003, Inventbiotech, MN, USA).



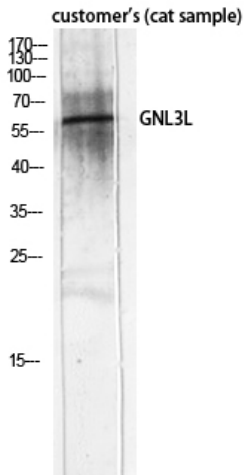
Western Blot analysis of HT29 cells using GNL3L Polyclonal Antibody diluted at 1:2000 cells nucleus extracted by Minute TM Cytoplasmic and Nuclear Fractionation kit (SC-003, Inventbiotech, MN, USA).

**Nanjing BYabs science technology Co.,Ltd**

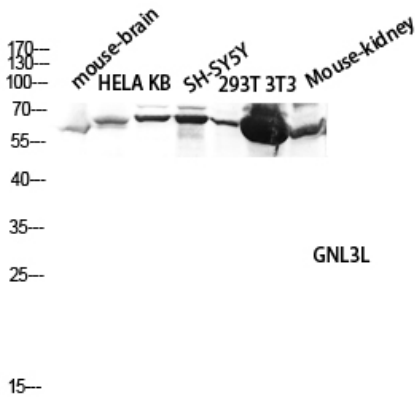
网址: [www.njbybio.com](http://www.njbybio.com)

官方热线: 025-5229-8998

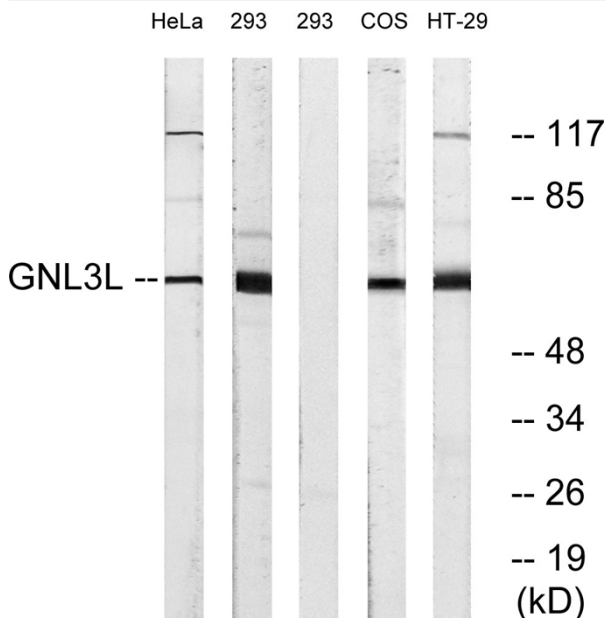
监督电话: 15950492658



Western Blot analysis of customer's (cat sample) using GNL3L Polyclonal Antibody diluted at 1:2000 cells nucleus extracted by Minute TM Cytoplasmic and Nuclear Fractionation kit (SC-003, Inventbiotech, MN, USA).



Western blot analysis of mouse-brain HELA KB SH-SY5Y 293T 3T3 Mouse-kidney lysis using GNL3L antibody. Antibody was diluted at 1:2000 cells nucleus extracted by Minute TM Cytoplasmic and Nuclear Fractionation kit (SC-003, Inventbiotech, MN, USA).



Western blot analysis of lysates from 293, HeLa, and HT-29 cells, using GNL3L Antibody. The lane on the right is blocked with the synthesized peptide.