



# Mcl-1 Polyclonal Antibody

<b>Catalog No</b>	BYab-00442
<b>Isotype</b>	IgG
<b>Reactivity</b>	Human;Mouse;Rat
<b>Applications</b>	WB;IHC;IF;ELISA
<b>Gene Name</b>	MCL1
<b>Protein Name</b>	Induced myeloid leukemia cell differentiation protein Mcl-1
<b>Immunogen</b>	The antiserum was produced against synthesized peptide derived from human MCL1. AA range:91-140
<b>Specificity</b>	Mcl-1 Polyclonal Antibody detects endogenous levels of Mcl-1 protein.
<b>Formulation</b>	Liquid in PBS containing 50% glycerol, 0.5% BSA and 0.02% sodium azide.
<b>Source</b>	Polyclonal, Rabbit,IgG
<b>Purification</b>	The antibody was affinity-purified from rabbit antiserum by affinity-chromatography using epitope-specific immunogen.
<b>Dilution</b>	WB: 1/500 - 1/2000. IHC: 1/100 - 1/300. ELISA: 1/40000.. IF 1:50-200
<b>Concentration</b>	1 mg/ml
<b>Purity</b>	≥90%
<b>Storage Stability</b>	-20°C/1 year
<b>Synonyms</b>	MCL1; BCL2L3; Induced myeloid leukemia cell differentiation protein Mcl-1; Bcl-2-like protein 3; Bcl2-L-3; Bcl-2-related protein EAT/mcl1; mcl1/EAT
<b>Observed Band</b>	About 40kd in human,39kd in mouse and rat
<b>Cell Pathway</b>	Membrane ; Single-pass membrane protein . Cytoplasm. Mitochondrion. Nucleus, nucleoplasm. Cytoplasmic, associated with mitochondria.
<b>Tissue Specificity</b>	Ewing sarcoma,Mammary gland,Myeloid leukemia cell,Neuroblastoma,Placenta,Th
<b>Function</b>	function:Involved in the regulation of apoptosis versus cell survival, and in the maintenance of viability but not of proliferation. Mediates its effects by interactions with a number of other regulators of apoptosis. Isoform 1 inhibits apoptosis while isoform 2 promotes it.,induction:Expression increases early during phorbol-ester induced differentiation along the monocyte/macrophage pathway in myeloid leukemia cell lines ML-1. Rapidly up-regulated by CSF2 in ML-1 cells. Up-regulated by heat-shock induced differentiation. Expression increases early during retinoic acid-induced differentiation.,PTM:Cleaved by CASP3 during apoptosis. In intact cells cleavage occurs preferentially after Asp-127, yielding a pro-apoptotic 28 kDa C-terminal fragment.,PTM:Phosphorylated on Thr-163.

**Nanjing BYabscience technology Co.,Ltd**



Treatment with taxol or okadaic acid induces phosphorylation on additional sites.,PTM:Rapidly degraded in the abs

## Background

This gene encodes an anti-apoptotic protein, which is a member of the Bcl-2 family. Alternative splicing results in multiple transcript variants. The longest gene product (isoform 1) enhances cell survival by inhibiting apoptosis while the alternatively spliced shorter gene products (isoform 2 and isoform 3) promote apoptosis and are death-inducing. [provided by RefSeq, Oct 2010],

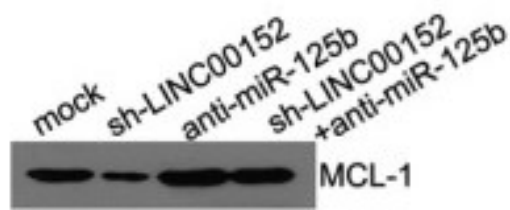
## matters needing attention

Avoid repeated freezing and thawing!

## Usage suggestions

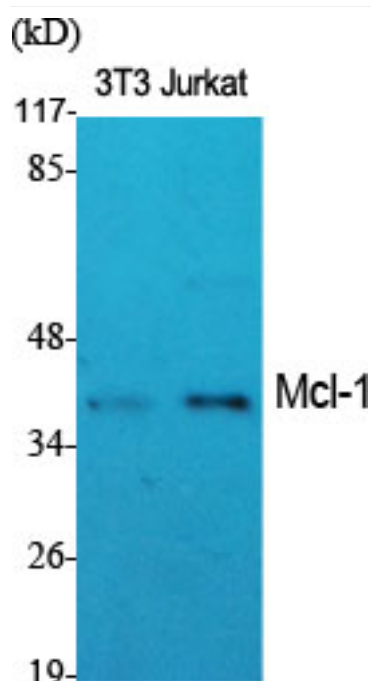
This product can be used in immunological reaction related experiments. For more information, please consult technical personnel.

## Products Images

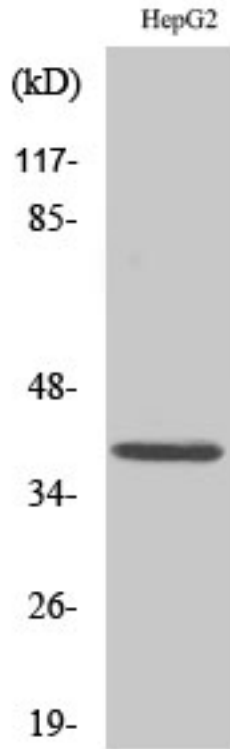


Chen, Puxiang, et al. "Long noncoding RNA LINC00152 promotes cell proliferation through competitively binding endogenous miR-125b with MCL-1 by regulating mitochondrial apoptosis pathways in ovarian cancer." *Cancer medicine* 7.9 (2018): 4530-4541.

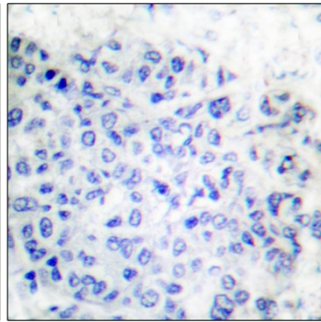
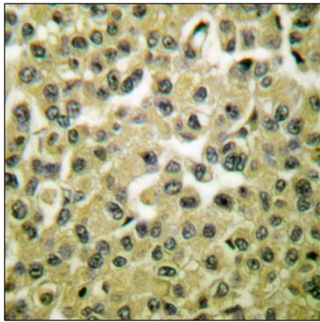
Western Blot analysis of various cells using Mcl-1 Polyclonal Antibody diluted at 1:1000



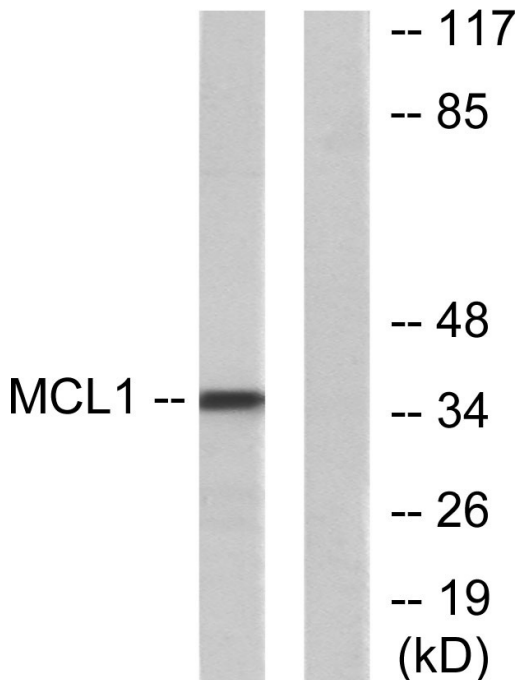
Nanjing BYabs science technology Co.,Ltd



Western Blot analysis of Jurkat cells using Mcl-1  
Polyclonal Antibody diluted at 1:1000



Immunohistochemistry analysis of paraffin-embedded  
human breast carcinoma tissue, using MCL1 Antibody.  
The picture on the right is blocked with the synthesized  
peptide.



Western blot analysis of lysates from HUVEC cells,  
using MCL1 Antibody. The lane on the right is blocked  
with the synthesized peptide.

Nanjing BYabs science technology Co.,Ltd