



NY-CO-1 Polyclonal Antibody

| | |
|----------------------------------|---|
| Catalog No | BYab-00466 |
| Isotype | IgG |
| Reactivity | Human;Mouse;Rat |
| Applications | WB;IHC;IF;ELISA |
| Gene Name | NEMF |
| Protein Name | Nuclear export mediator factor NEMF |
| Immunogen | The antiserum was produced against synthesized peptide derived from human SDCG1. AA range:881-930 |
| Specificity | NY-CO-1 Polyclonal Antibody detects endogenous levels of NY-CO-1 protein. |
| Formulation | Liquid in PBS containing 50% glycerol, 0.5% BSA and 0.02% sodium azide. |
| Source | Polyclonal, Rabbit,IgG |
| Purification | The antibody was affinity-purified from rabbit antiserum by affinity-chromatography using epitope-specific immunogen. |
| Dilution | WB: 1/500 - 1/2000. IHC: 1/100 - 1/300. ELISA: 1/20000.. IF 1:50-200 |
| Concentration | 1 mg/ml |
| Purity | ≥90% |
| Storage Stability | -20°C/1 year |
| Synonyms | NEMF; SDCCAG1; Nuclear export mediator factor NEMF; Antigen NY-CO-1; Serologically defined colon cancer antigen 1 |
| Observed Band | 123kD |
| Cell Pathway | Cytoplasm, cytosol . Nucleus . |
| Tissue Specificity | Expressed in brain, heart, liver, lung, spleen, and skeletal muscle. Also expressed at lower levels in stomach and testis. |
| Function | |
| Background | This gene encodes a component of the ribosome quality control complex. The encoded protein facilitates the recognition and ubiquitination of stalled 60S subunits by the ubiquitin ligase listerin. A similar protein in fly functions as a tumor suppressor. [provided by RefSeq, Jul 2016], |
| matters needing attention | Avoid repeated freezing and thawing! |

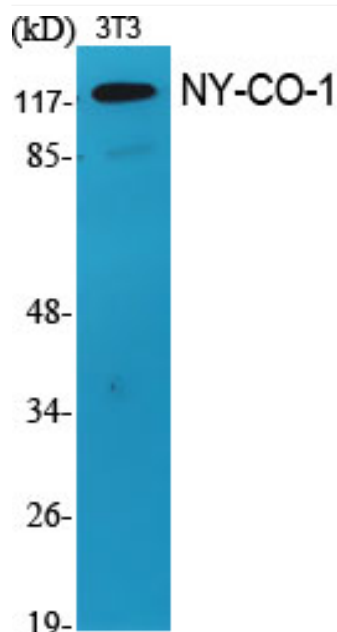
Nanjing BYabscience technology Co.,Ltd



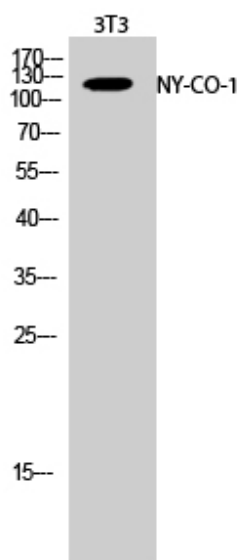
Usage suggestions

This product can be used in immunological reaction related experiments. For more information, please consult technical personnel.

Products Images



Western Blot analysis of various cells using NY-CO-1 Polyclonal Antibody



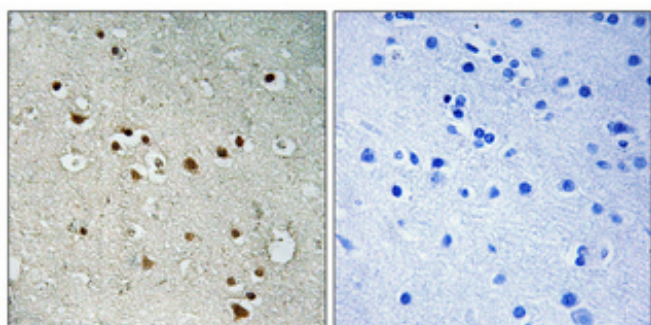
Western Blot analysis of 3T3 cells using NY-CO-1 Polyclonal Antibody

Nanjing BYabs science technology Co.,Ltd

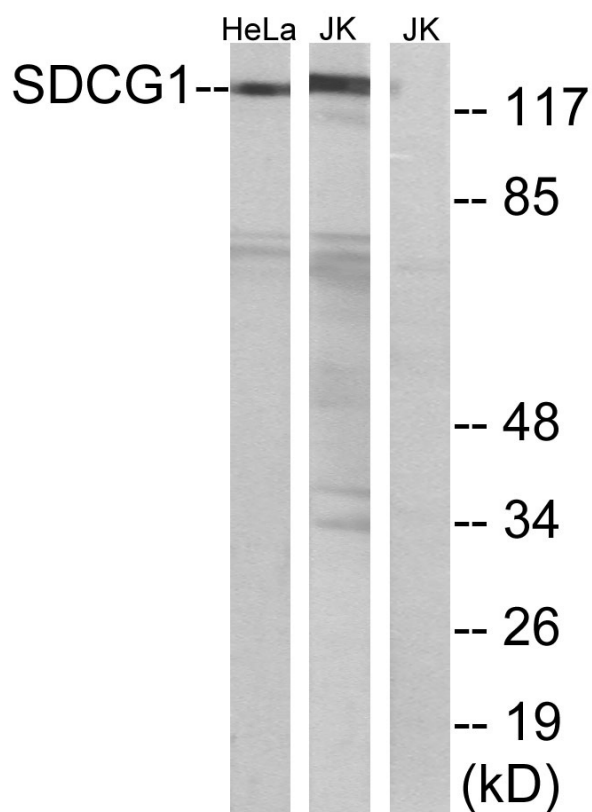
网址: www.njbybio.com

官方热线: 025-5229-8998

监督电话: 15950492658



Immunohistochemical analysis of paraffin-embedded Human brain. Antibody was diluted at 1:100(4° overnight). High-pressure and temperature Tris-EDTA,pH8.0 was used for antigen retrieval. Negative contrl (right) obtained from antibody was pre-absorbed by immunogen peptide.



Western blot analysis of lysates from HeLa and Jurkat cells, using SDCG1 Antibody. The lane on the right is blocked with the synthesized peptide.