



OGFR Polyclonal Antibody

Catalog No	BYab-00468
Isotype	IgG
Reactivity	Human
Applications	WB;ELISA
Gene Name	OGFR
Protein Name	Opioid growth factor receptor
Immunogen	The antiserum was produced against synthesized peptide derived from human OGFR. AA range:138-187
Specificity	OGFR Polyclonal Antibody detects endogenous levels of OGFR protein.
Formulation	Liquid in PBS containing 50% glycerol, 0.5% BSA and 0.02% sodium azide.
Source	Polyclonal, Rabbit,IgG
Purification	The antibody was affinity-purified from rabbit antiserum by affinity-chromatography using epitope-specific immunogen.
Dilution	Western Blot: 1/500 - 1/2000. ELISA: 1/20000. Not yet tested in other applications.
Concentration	1 mg/ml
Purity	≥90%
Storage Stability	-20°C/1 year
Synonyms	OGFR; Opioid growth factor receptor; OGFr; Protein 7-60; Zeta-type opioid receptor
Observed Band	90kD
Cell Pathway	Cytoplasm . Nucleus . The OGF/OGFR complex is probably translocated to the nucleus.
Tissue Specificity	Highly expressed in the heart and liver, moderately in skeletal muscle and kidney and to a lesser extent in brain and pancreas. Expressed in fetal tissues including liver and kidney.
Function	function:Receptor for opioid growth factor (OGF), also known as Met-enkephalin. Seems to be involved in growth regulation.,online information:OGFr entry,PTM:Phosphorylated upon DNA damage, probably by ATM or ATR.,similarity:Belongs to the opioid growth factor receptor family.,subcellular location:The OGF/OGFR complex is probably translocated to the nucleus.,tissue specificity:Highly expressed in the heart and liver, moderately in skeletal muscle and kidney and to a lesser extent in brain and pancreas. Expressed in fetal tissues including liver and kidney.,

Nanjing BYabscience technology Co.,Ltd



Background

The protein encoded by this gene is a receptor for opioid growth factor (OGF), also known as [Met(5)]-enkephalin. OGF is a negative regulator of cell proliferation and tissue organization in a variety of processes. The encoded unbound receptor for OGF has been localized to the outer nuclear envelope, where it binds OGF and is translocated into the nucleus. The coding sequence of this gene contains a polymorphic region of 60 nt tandem imperfect repeat units. Several transcripts containing between zero and eight repeat units have been reported. [provided by RefSeq, Jul 2008],

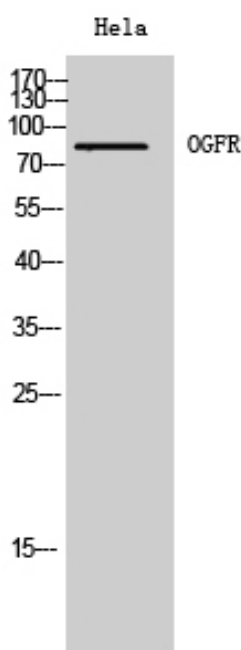
matters needing attention

Avoid repeated freezing and thawing!

Usage suggestions

This product can be used in immunological reaction related experiments. For more information, please consult technical personnel.

Products Images



Western Blot analysis of HeLa cells using OGFR Polyclonal Antibody