



# PDRG1 Polyclonal Antibody

<b>Catalog No</b>	BYab-00489
<b>Isotype</b>	IgG
<b>Reactivity</b>	Human;Mouse;Rat
<b>Applications</b>	WB;IHC;IF;ELISA
<b>Gene Name</b>	PDRG1
<b>Protein Name</b>	p53 and DNA damage-regulated protein 1
<b>Immunogen</b>	The antiserum was produced against synthesized peptide derived from human PDRG1. AA range:58-107
<b>Specificity</b>	PDRG1 Polyclonal Antibody detects endogenous levels of PDRG1 protein.
<b>Formulation</b>	Liquid in PBS containing 50% glycerol, 0.5% BSA and 0.02% sodium azide.
<b>Source</b>	Polyclonal, Rabbit,IgG
<b>Purification</b>	The antibody was affinity-purified from rabbit antiserum by affinity-chromatography using epitope-specific immunogen.
<b>Dilution</b>	WB: 1/500 - 1/2000. IHC: 1/100 - 1/300. ELISA: 1/40000.. IF 1:50-200
<b>Concentration</b>	1 mg/ml
<b>Purity</b>	≥90%
<b>Storage Stability</b>	-20°C/1 year
<b>Synonyms</b>	PDRG1; C20orf126; PDRG; p53 and DNA damage-regulated protein 1
<b>Observed Band</b>	19kD
<b>Cell Pathway</b>	Cytoplasm .
<b>Tissue Specificity</b>	Predominantly expressed in normal testis and exhibits reduced but detectable expression in other organs.
<b>Function</b>	function:May play a role in chaperone-mediated protein folding .,induction:By UV and repressed by TP53/p53.,similarity:Belongs to the prefoldin subunit beta family.,tissue specificity:Predominantly expressed in normal testis and exhibits reduced but detectable expression in other organs.,
<b>Background</b>	function:May play a role in chaperone-mediated protein folding .,induction:By UV and repressed by TP53/p53.,similarity:Belongs to the prefoldin subunit beta family.,tissue specificity:Predominantly expressed in normal testis and exhibits reduced but detectable expression in other organs.,

**Nanjing BYabs science technology Co.,Ltd**



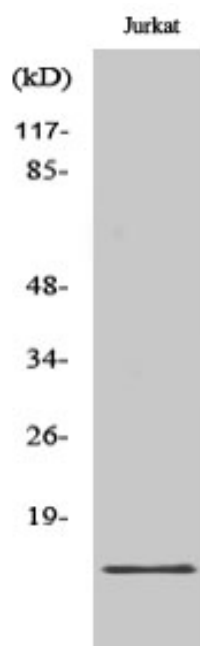
**matters needing attention**

Avoid repeated freezing and thawing!

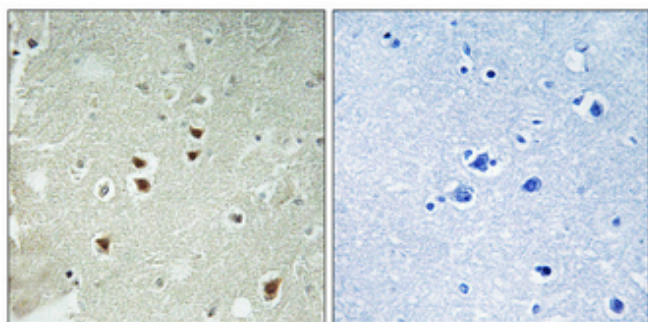
**Usage suggestions**

This product can be used in immunological reaction related experiments. For more information, please consult technical personnel.

## Products Images



Western Blot analysis of various cells using PDRG1 Polyclonal Antibody



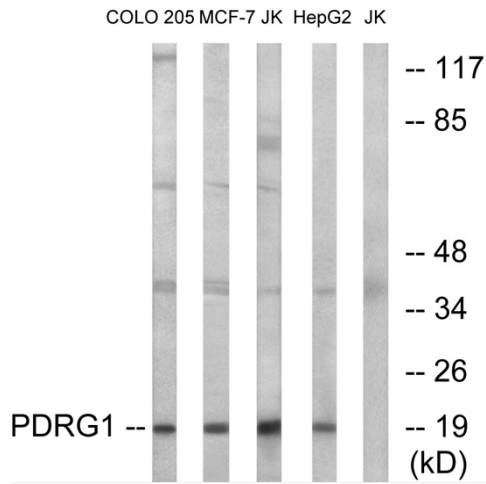
Immunohistochemical analysis of paraffin-embedded Human brain. Antibody was diluted at 1:100(4° overnight). High-pressure and temperature Tris-EDTA,pH8.0 was used for antigen retrieval. Negative contrl (right) obtained from antibody was pre-absorbed by immunogen peptide.

Nanjing BYabs science technology Co.,Ltd

网址: [www.njbybio.com](http://www.njbybio.com)

官方热线: 025-5229-8998

监督电话: 15950492658



Western blot analysis of lysates from Jurkat, COLO, MCF-7, and HepG2 cells, using PDRG1 Antibody. The lane on the right is blocked with the synthesized peptide.