



TACC1 Polyclonal Antibody

Catalog No	BYab-00527
Isotype	IgG
Reactivity	Human;Mouse
Applications	WB;IHC;IF;ELISA
Gene Name	TACC1
Protein Name	Transforming acidic coiled-coil-containing protein 1
Immunogen	The antiserum was produced against synthesized peptide derived from human TACC1. AA range:11-60
Specificity	TACC1 Polyclonal Antibody detects endogenous levels of TACC1 protein.
Formulation	Liquid in PBS containing 50% glycerol, 0.5% BSA and 0.02% sodium azide.
Source	Polyclonal, Rabbit,IgG
Purification	The antibody was affinity-purified from rabbit antiserum by affinity-chromatography using epitope-specific immunogen.
Dilution	Western Blot: 1/500 - 1/2000. Immunohistochemistry: 1/100 - 1/300. Immunofluorescence: 1/200 - 1/1000. ELISA: 1/10000. Not yet tested in other applications.
Concentration	1 mg/ml
Purity	≥90%
Storage Stability	-20°C/1 year
Synonyms	TACC1; KIAA1103; Transforming acidic coiled-coil-containing protein 1; Gastric cancer antigen Ga55; Taxin-1
Observed Band	87kD
Cell Pathway	Cytoplasm . Nucleus . Cytoplasm, cytoskeleton, microtubule organizing center, centrosome . Midbody . Nucleus during interphase. Weakly concentrated at centrosomes during mitosis and colocalizes with AURKC at the midbody during cytokinesis. .; [Isoform 5]: Membrane ; Lipid-anchor .; [Isoform 10]: Cytoplasm .
Tissue Specificity	Isoform 1, isoform 3 and isoform 5 are ubiquitous. Isoform 2 is strongly expressed in the brain, weakly detectable in lung and colon, and overexpressed in gastric cancer. Isoform 4 is not detected in normal tissues, but strong expression was found in gastric cancer tissues. Down-regulated in a subset of cases of breast cancer.
Function	alternative products:Additional isoforms seem to exist,developmental stage:Expressed at high level during early embryogenesis.,function:Likely involved in the processes that promote cell division prior to the formation of differentiated tissues.,miscellaneous:Down-regulated in a subset of cases of

Nanjing BYabscience technology Co.,Ltd



breast cancer.,PTM:Isoform 1 is heavily phosphorylated; isoform 6 is not. Phosphorylated upon DNA damage, probably by ATM or ATR.,similarity:Belongs to the TACC family.,similarity:Contains 2 SPAZ (Ser/Pro-rich AZU-1) domains.,subcellular location:Nucleus during interphase. Weakly concentrated at centrosomes during mitosis.,subunit:Interacts with KIAA0097/CH-TOG and with the oncogenic transcription factor YEATS4. Interacts with the Aurora kinases A and B (STK6 and AURKB). Interacts with LSM7, TDRD7 and SNRPG. Interacts with GCN5L2 and PCAF.,tissue specificity:Isoform 1, isoform 3 and isoform 5 a

Background

This locus may represent a breast cancer candidate gene. It is located close to FGFR1 on a region of chromosome 8 that is amplified in some breast cancers. Three transcript variants encoding different isoforms have been found for this gene. [provided by RefSeq, Apr 2009],

matters needing attention

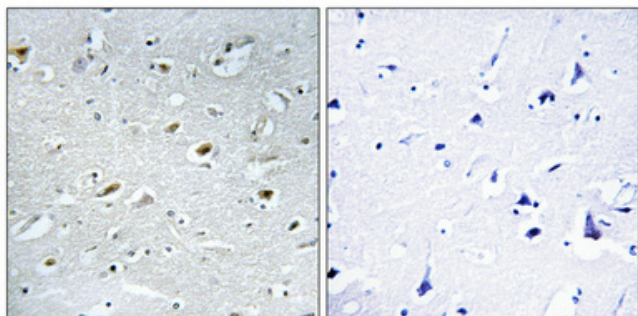
Avoid repeated freezing and thawing!

Usage suggestions

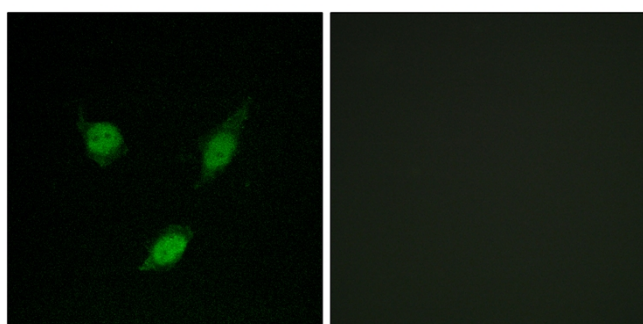
This product can be used in immunological reaction related experiments. For more information, please consult technical personnel.



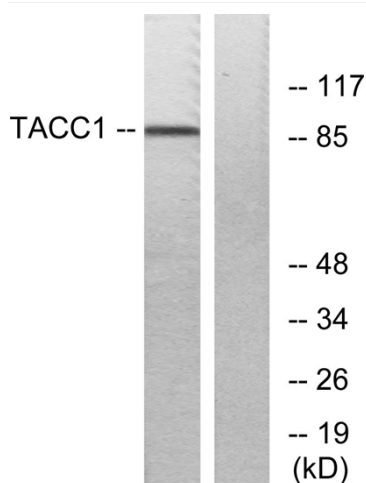
Products Images



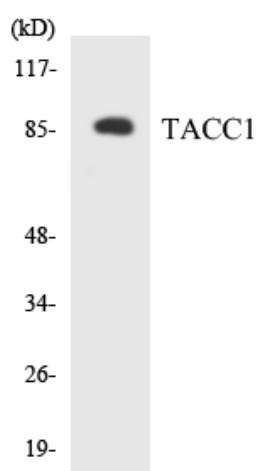
Immunohistochemical analysis of paraffin-embedded Human brain. Antibody was diluted at 1:100(4° overnight). High-pressure and temperature Tris-EDTA,pH8.0 was used for antigen retrieval. Negative contrl (right) obtained from antibody was pre-absorbed by immunogen peptide.



Immunofluorescence analysis of MCF7 cells, using TACC1 Antibody. The picture on the right is blocked with the synthesized peptide.



Western blot analysis of lysates from K562 cells, using TACC1 Antibody. The lane on the right is blocked with the synthesized peptide.



Western blot analysis of the lysates from HeLa cells using TACC1 antibody.

Nanjing BYabs science technology Co.,Ltd



Nanjing BYabscience technology Co.,Ltd

网址: www.njbybio.com

官方热线: 025-5229-8998

监督电话: 15950492658