



CRBP-III Polyclonal Antibody

Catalog No	BYab-00690
Isotype	IgG
Reactivity	Human;Rat;Mouse;
Applications	IHC;IF;ELISA
Gene Name	RBP5
Protein Name	Retinol-binding protein 5
Immunogen	The antiserum was produced against synthesized peptide derived from human CRBP III. AA range:10-59
Specificity	CRBP-III Polyclonal Antibody detects endogenous levels of CRBP-III protein.
Formulation	Liquid in PBS containing 50% glycerol, 0.5% BSA and 0.02% sodium azide.
Source	Polyclonal, Rabbit,IgG
Purification	The antibody was affinity-purified from rabbit antiserum by affinity-chromatography using epitope-specific immunogen.
Dilution	Immunohistochemistry: 1/100 - 1/300. Immunofluorescence: 1/200 - 1/1000. ELISA: 1/20000. Not yet tested in other applications.
Concentration	1 mg/ml
Purity	≥90%
Storage Stability	-20°C/1 year
Synonyms	RBP5; Retinol-binding protein 5; Cellular retinol-binding protein III; CRBP-III; HRBPiso
Observed Band	
Cell Pathway	Cytoplasm .
Tissue Specificity	Higher expression in adult kidney and liver and to a lesser extent in adult and fetal spleen, adult lymph nodes and appendix, and fetal liver and kidney. Strongly decreased in hepatocellular carcinoma tissues (at protein level).
Function	domain:Forms a beta-barrel structure that accommodates hydrophobic ligands in its interior.,function:Intracellular transport of retinol.,similarity:Belongs to the calycin superfamily. Fatty-acid binding protein (FABP) family.,tissue specificity:Higher expression in adult kidney and liver and to a lesser extent in adult and fetal spleen, adult lymph nodes and appendix, and fetal liver and kidney. Strongly decreased in hepatocellular carcinoma tissues (at protein level).,
Background	retinol binding protein 5(RBP5) Homo sapiens The protein encoded by this gene is a cellular retinol-binding protein expressed highly in kidney and liver.

Nanjing BYabscience technology Co.,Ltd



Down-regulation of the encoded protein in hepatocellular carcinoma was associated with large tumor size and poor patient survival rates. [provided by RefSeq, Jul 2016],

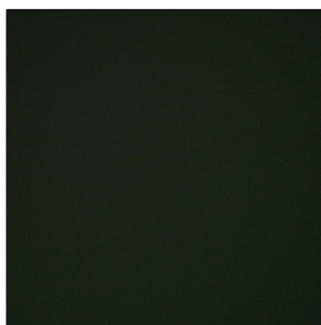
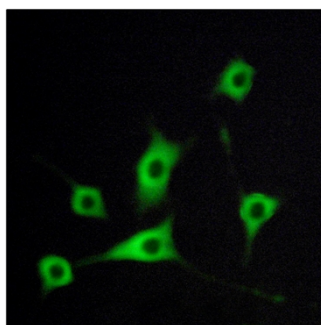
matters needing attention

Avoid repeated freezing and thawing!

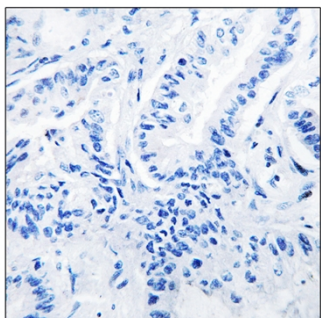
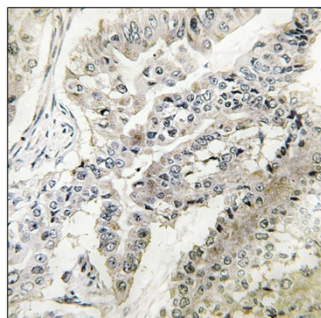
Usage suggestions

This product can be used in immunological reaction related experiments. For more information, please consult technical personnel.

Products Images



Immunofluorescence analysis of LOVO cells, using CRBP III Antibody. The picture on the right is blocked with the synthesized peptide.



Immunohistochemistry analysis of paraffin-embedded human lung carcinoma tissue, using CRBP III Antibody. The picture on the right is blocked with the synthesized peptide.

Nanjing BYabscience technology Co.,Ltd

网址: www.njbybio.com

官方热线: 025-5229-8998

监督电话: 15950492658