



NTF2 Polyclonal Antibody

Catalog No	BYab-00708
Isotype	IgG
Reactivity	Human;Mouse;Rat
Applications	WB;IHC;IF;ELISA
Gene Name	NUTF2
Protein Name	Nuclear transport factor 2
Immunogen	The antiserum was produced against synthesized peptide derived from human NUTF2. AA range:67-116
Specificity	NTF2 Polyclonal Antibody detects endogenous levels of NTF2 protein.
Formulation	Liquid in PBS containing 50% glycerol, 0.5% BSA and 0.02% sodium azide.
Source	Polyclonal, Rabbit,IgG
Purification	The antibody was affinity-purified from rabbit antiserum by affinity-chromatography using epitope-specific immunogen.
Dilution	WB: 1/500 - 1/2000. IHC: 1/100 - 1/300. ELISA: 1/20000.. IF 1:50-200
Concentration	1 mg/ml
Purity	≥90%
Storage Stability	-20°C/1 year
Synonyms	NUTF2; NTF2; Nuclear transport factor 2; NTF-2; Placental protein 15; PP15
Observed Band	15kD
Cell Pathway	Cytoplasm, cytosol . Nucleus outer membrane . Nucleus, nuclear pore complex . Nucleus inner membrane . Nucleus, nucleoplasm . At steady state it is essentially nucleoplasmic, enriched in nucleoplasmic foci. .
Tissue Specificity	Lung,
Function	function:Facilitates protein transport into the nucleus. Interacts with the nucleoporin p62 and with Ran. Acts at a relatively late stage of nuclear protein import, subsequent to the initial docking of nuclear import ligand at the nuclear envelope. Could be part of a multicomponent system of cytosolic factors that assemble at the pore complex during nuclear import.,similarity:Contains 1 NTF2 domain.,subunit:Homodimer.,
Background	This gene encodes a cytosolic factor that facilitates protein transport into the nucleus. The encoded protein is required for nuclear import of the small Ras-like GTPase, Ran which is involved in numerous cellular processes. This protein also

Nanjing BYabscience technology Co.,Ltd



interacts with the nuclear pore complex glycoprotein p62. [provided by RefSeq, Apr 2016],

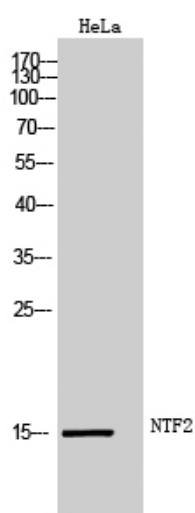
matters needing attention

Avoid repeated freezing and thawing!

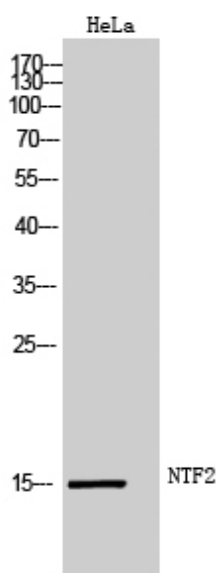
Usage suggestions

This product can be used in immunological reaction related experiments. For more information, please consult technical personnel.

Products Images



Western Blot analysis of HeLa cells using NTF2 Polyclonal Antibody



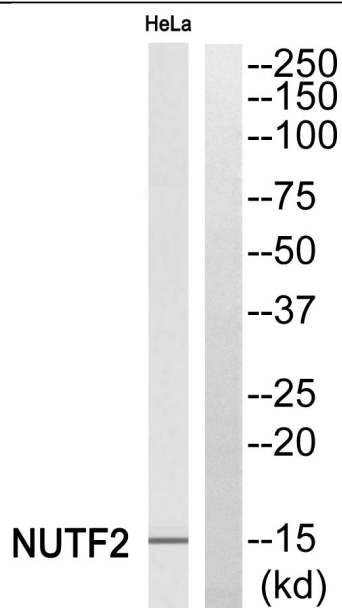
Western Blot analysis of HeLa cells using NTF2 Polyclonal Antibody

Nanjing BYabs science technology Co.,Ltd

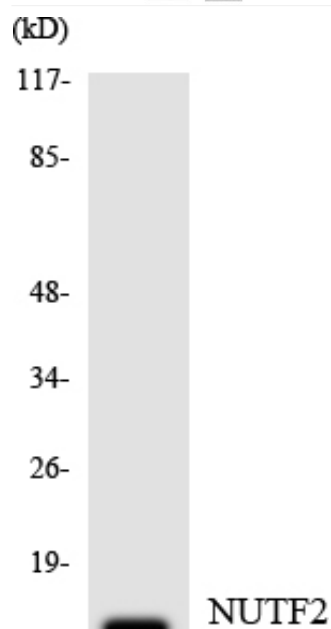
网址: www.njbybio.com

官方热线: 025-5229-8998

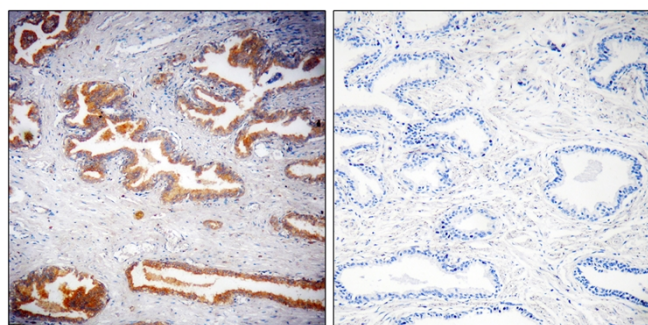
监督电话: 15950492658



Western blot analysis of NUTF2 Antibody. The lane on the right is blocked with the NUTF2 peptide.



Immunohistochemistry analysis of paraffin-embedded human prostate, using NUTF2 Antibody. The lane on the right is blocked with the NUTF2 peptide.



Western blot analysis of the lysates from HT-29 cells using NUTF2 antibody.