



# Rabaptin-5α Polyclonal Antibody

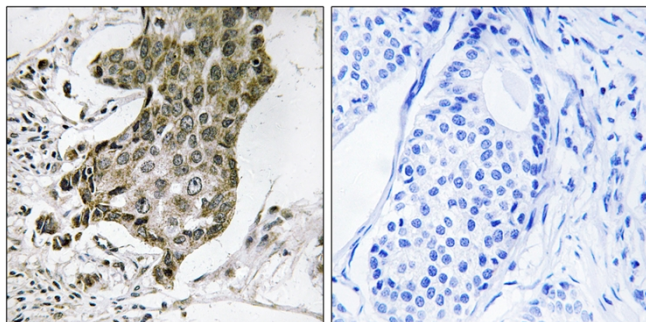
|                           |                                                                                                                                                                                                                                                                                                                                                                                                                                                                                                                                                      |
|---------------------------|------------------------------------------------------------------------------------------------------------------------------------------------------------------------------------------------------------------------------------------------------------------------------------------------------------------------------------------------------------------------------------------------------------------------------------------------------------------------------------------------------------------------------------------------------|
| <b>Catalog No</b>         | BYab-00716                                                                                                                                                                                                                                                                                                                                                                                                                                                                                                                                           |
| <b>Isotype</b>            | IgG                                                                                                                                                                                                                                                                                                                                                                                                                                                                                                                                                  |
| <b>Reactivity</b>         | Human;Mouse;Rat                                                                                                                                                                                                                                                                                                                                                                                                                                                                                                                                      |
| <b>Applications</b>       | IHC;IF;ELISA                                                                                                                                                                                                                                                                                                                                                                                                                                                                                                                                         |
| <b>Gene Name</b>          | RABEP1                                                                                                                                                                                                                                                                                                                                                                                                                                                                                                                                               |
| <b>Protein Name</b>       | Rab GTPase-binding effector protein 1                                                                                                                                                                                                                                                                                                                                                                                                                                                                                                                |
| <b>Immunogen</b>          | The antiserum was produced against synthesized peptide derived from human RABEP1. AA range:549-598                                                                                                                                                                                                                                                                                                                                                                                                                                                   |
| <b>Specificity</b>        | Rabaptin-5α Polyclonal Antibody detects endogenous levels of Rabaptin-5α protein.                                                                                                                                                                                                                                                                                                                                                                                                                                                                    |
| <b>Formulation</b>        | Liquid in PBS containing 50% glycerol, 0.5% BSA and 0.02% sodium azide.                                                                                                                                                                                                                                                                                                                                                                                                                                                                              |
| <b>Source</b>             | Polyclonal, Rabbit,IgG                                                                                                                                                                                                                                                                                                                                                                                                                                                                                                                               |
| <b>Purification</b>       | The antibody was affinity-purified from rabbit antiserum by affinity-chromatography using epitope-specific immunogen.                                                                                                                                                                                                                                                                                                                                                                                                                                |
| <b>Dilution</b>           | IHC: 1/100 - 1/300. ELISA: 1/40000.. IF 1:50-200                                                                                                                                                                                                                                                                                                                                                                                                                                                                                                     |
| <b>Concentration</b>      | 1 mg/ml                                                                                                                                                                                                                                                                                                                                                                                                                                                                                                                                              |
| <b>Purity</b>             | ≥90%                                                                                                                                                                                                                                                                                                                                                                                                                                                                                                                                                 |
| <b>Storage Stability</b>  | -20°C/1 year                                                                                                                                                                                                                                                                                                                                                                                                                                                                                                                                         |
| <b>Synonyms</b>           | RABEP1; RAB5EP; RABPT5; RABPT5A; Rab GTPase-binding effector protein 1; Rabaptin-4; Rabaptin-5; Rabaptin-5alpha; Renal carcinoma antigen NY-REN-17                                                                                                                                                                                                                                                                                                                                                                                                   |
| <b>Observed Band</b>      |                                                                                                                                                                                                                                                                                                                                                                                                                                                                                                                                                      |
| <b>Cell Pathway</b>       | Cytoplasm. Early endosome. Recycling endosome. Cytoplasmic vesicle.                                                                                                                                                                                                                                                                                                                                                                                                                                                                                  |
| <b>Tissue Specificity</b> | Cervix carcinoma,Epithelium,Fetal brain cortex,Kidney,Plate                                                                                                                                                                                                                                                                                                                                                                                                                                                                                          |
| <b>Function</b>           | function:Rab effector protein acting as linker between gamma-adaptin, RAB4A and RAB5A. Involved in endocytic membrane fusion and membrane trafficking of recycling endosomes. Stimulates RABGEF1 mediated nucleotide exchange on RAB5A.,PTM:Proteolytic cleavage by caspases in apoptotic cells causes loss of endosome fusion activity.,similarity:Belongs to the rabaptin family.,subunit:Heterodimer with RABGEF1. The heterodimer binds RAB4A and RAB5A that have been activated by GTP-binding. Binds TSC2, GGA1, GGA2, GGA3, AP1G1 and AP1G2., |

**Nanjing BYabscience technology Co.,Ltd**



|                                  |                                                                                                                                                                                                                                                                                                                                                                                                                                                                                                                                                         |
|----------------------------------|---------------------------------------------------------------------------------------------------------------------------------------------------------------------------------------------------------------------------------------------------------------------------------------------------------------------------------------------------------------------------------------------------------------------------------------------------------------------------------------------------------------------------------------------------------|
| <b>Background</b>                | function: Rab effector protein acting as linker between gamma-adaptin, RAB4A and RAB5A. Involved in endocytic membrane fusion and membrane trafficking of recycling endosomes. Stimulates RABGEF1 mediated nucleotide exchange on RAB5A. PTM: Proteolytic cleavage by caspases in apoptotic cells causes loss of endosome fusion activity. similarity: Belongs to the rabaptin family. subunit: Heterodimer with RABGEF1. The heterodimer binds RAB4A and RAB5A that have been activated by GTP-binding. Binds TSC2, GGA1, GGA2, GGA3, AP1G1 and AP1G2. |
| <b>matters needing attention</b> | Avoid repeated freezing and thawing!                                                                                                                                                                                                                                                                                                                                                                                                                                                                                                                    |
| <b>Usage suggestions</b>         | This product can be used in immunological reaction related experiments. For more information, please consult technical personnel.                                                                                                                                                                                                                                                                                                                                                                                                                       |

## Products Images



Immunohistochemistry analysis of paraffin-embedded human breast carcinoma tissue, using RABEP1 Antibody. The picture on the right is blocked with the synthesized peptide.