



SLC43A1 Polyclonal Antibody

Catalog No	BYab-00728
Isotype	IgG
Reactivity	Human;Rat;Mouse;
Applications	WB;ELISA;IHC
Gene Name	SLC43A1
Protein Name	Large neutral amino acids transporter small subunit 3
Immunogen	The antiserum was produced against synthesized peptide derived from human LAT3. AA range:231-280
Specificity	SLC43A1 Polyclonal Antibody detects endogenous levels of SLC43A1 protein.
Formulation	Liquid in PBS containing 50% glycerol, 0.5% BSA and 0.02% sodium azide.
Source	Polyclonal, Rabbit,IgG
Purification	The antibody was affinity-purified from rabbit antiserum by affinity-chromatography using epitope-specific immunogen.
Dilution	WB 1:500-2000;IHC-p 1:50-300; ELISA 2000-20000
Concentration	1 mg/ml
Purity	≥90%
Storage Stability	-20°C/1 year
Synonyms	SLC43A1; LAT3; PB39; POV1; Large neutral amino acids transporter small subunit 3; L-type amino acid transporter 3; Prostate cancer overexpressed gene 1 protein; Solute carrier family 43 member 1
Observed Band	61kD
Cell Pathway	Membrane ; Multi-pass membrane protein .
Tissue Specificity	In adults, found in all tissues examined with highest expression in pancreas. In fetus, highest expression in liver and lower levels in kidney, and lung. High levels found in prostate cancer cells.
Function	function:Sodium-independent, high affinity transport of large neutral amino acids. Has narrower substrate selectivity compared to SLC7A5 and SLC7A8 and mainly transports branched-chain amino acids and phenylalanine. Plays a role in the development of human prostate cancer, from prostatic intraepithelial neoplasia to invasive prostate cancer.,miscellaneous:Up-regulated in early prostate cancer development with highest expression level in seminomas of testicular germ cell tumors.,similarity:Belongs to the SLC43A transporter (TC 2.A.1.44) family.,tissue specificity:In adults, found in all tissues examined with highest expression in

Nanjing BYabscience technology Co.,Ltd



pancreas. In fetus, highest expression in liver and lower levels in kidney, and lung. High levels found in prostate cancer cells.,

Background

SLC43A1 belongs to the system L family of plasma membrane carrier proteins that transports large neutral amino acids (Babu et al., 2003 [PubMed 12930836]).[supplied by OMIM, Mar 2008],

matters needing attention

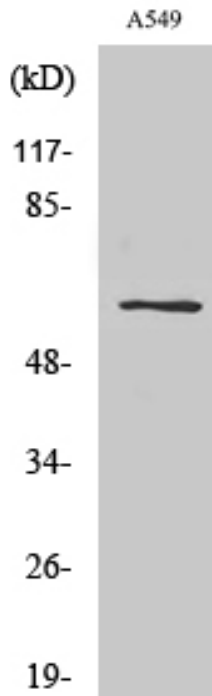
Avoid repeated freezing and thawing!

Usage suggestions

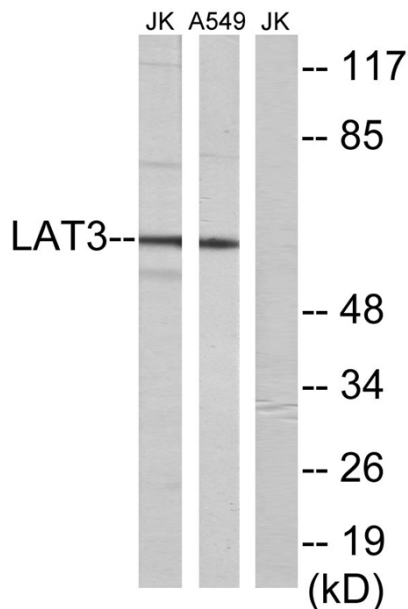
This product can be used in immunological reaction related experiments. For more information, please consult technical personnel.



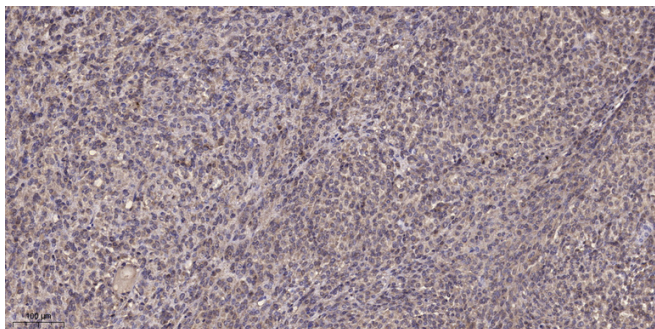
Products Images



Western Blot analysis of various cells using SLC43A1 Polyclonal Antibody



Western blot analysis of lysates from A549 and Jurkat cells, using LAT3 Antibody. The lane on the right is blocked with the synthesized peptide.



Immunohistochemical analysis of paraffin-embedded human Colon cancer. 1, Antibody was diluted at 1:200(4° overnight). 2, Tris-EDTA,pH9.0 was used for antigen retrieval. 3,Secondary antibody was diluted at 1:200(room temperature, 45min).