



SMVT Polyclonal Antibody

Catalog No	BYab-00729
Isotype	IgG
Reactivity	Human;Rat;Mouse;
Applications	WB; ELISA;IHC
Gene Name	SLC5A6
Protein Name	Sodium-dependent multivitamin transporter
Immunogen	The antiserum was produced against synthesized peptide derived from human SLC5A6. AA range:551-600
Specificity	SMVT Polyclonal Antibody detects endogenous levels of SMVT protein.
Formulation	Liquid in PBS containing 50% glycerol, 0.5% BSA and 0.02% sodium azide.
Source	Polyclonal, Rabbit,IgG
Purification	The antibody was affinity-purified from rabbit antiserum by affinity-chromatography using epitope-specific immunogen.
Dilution	WB 1:500-2000;IHC-p 1:50-300; ELISA 2000-20000
Concentration	1 mg/ml
Purity	≥90%
Storage Stability	-20°C/1 year
Synonyms	SLC5A6; SMVT; Sodium-dependent multivitamin transporter; Na(+)-dependent multivitamin transporter; Solute carrier family 5 member 6
Observed Band	68kD
Cell Pathway	Cell membrane ; Multi-pass membrane protein .; Cell membrane ; Multi-pass membrane protein . (Microbial infection) Exposure to E.coli lipopolysaccharides leads to reduced cell membrane localization. .
Tissue Specificity	Expressed in microvessels of the brain (at protein level) (PubMed:25809983). Expressed in heart, brain, placenta, lung, liver, skeletal muscle, kidney, and pancreas (PubMed:10329687).
Function	function:Transports pantothenate, biotin and lipoate in the presence of sodium.,similarity:Belongs to the sodium:solute symporter (SSF) (TC 2.A.21) family.,
Background	function:Transports pantothenate, biotin and lipoate in the presence of sodium.,similarity:Belongs to the sodium:solute symporter (SSF) (TC 2.A.21) family.,

Nanjing BYabscience technology Co.,Ltd



matters needing attention

Avoid repeated freezing and thawing!

Usage suggestions

This product can be used in immunological reaction related experiments. For more information, please consult technical personnel.

Nanjing BYabscience technology Co.,Ltd

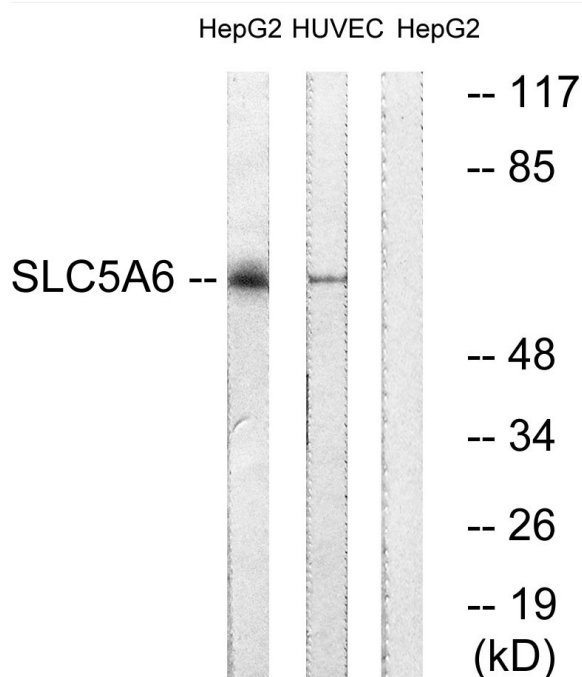
网址: www.njbybio.com

官方热线: 025-5229-8998

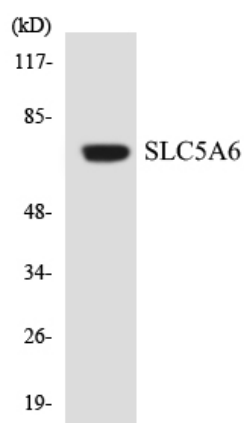
监督电话: 15950492658



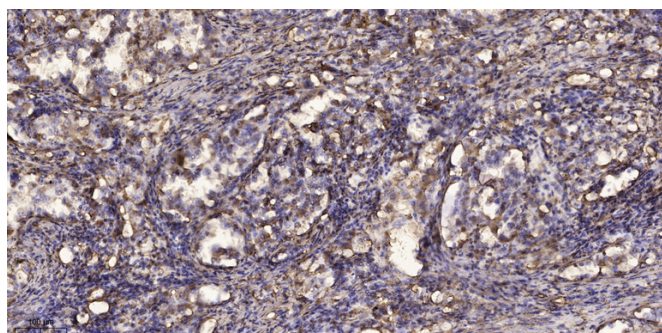
Products Images



Western blot analysis of lysates from HepG2 and HUVEC cells, using SLC5A6 Antibody. The lane on the right is blocked with the synthesized peptide.



Western blot analysis of the lysates from COLO205 cells using SLC5A6 antibody.



Immunohistochemical analysis of paraffin-embedded human Squamous cell carcinoma of lung. 1, Antibody was diluted at 1:200(4° overnight). 2, Tris-EDTA,pH9.0 was used for antigen retrieval. 3,Secondary antibody was diluted at 1:200(room temperature, 45min).

Nanjing BYabs science technology Co.,Ltd

网址: www.njbybio.com

官方热线: 025-5229-8998

监督电话: 15950492658