



TRAPPC6A Polyclonal Antibody

| | |
|---------------------------|--|
| Catalog No | BYab-00752 |
| Isotype | IgG |
| Reactivity | Human;Rat;Mouse; |
| Applications | IHC;IF;ELISA |
| Gene Name | TRAPPC6A |
| Protein Name | Trafficking protein particle complex subunit 6A |
| Immunogen | The antiserum was produced against synthesized peptide derived from human TRAPPC6A. AA range:31-80 |
| Specificity | TRAPPC6A Polyclonal Antibody detects endogenous levels of TRAPPC6A protein. |
| Formulation | Liquid in PBS containing 50% glycerol, 0.5% BSA and 0.02% sodium azide. |
| Source | Polyclonal, Rabbit,IgG |
| Purification | The antibody was affinity-purified from rabbit antiserum by affinity-chromatography using epitope-specific immunogen. |
| Dilution | IHC: 1/100 - 1/300. ELISA: 1/40000.. IF 1:50-200 |
| Concentration | 1 mg/ml |
| Purity | ≥90% |
| Storage Stability | -20°C/1 year |
| Synonyms | TRAPPC6A; HSPC289; Trafficking protein particle complex subunit 6A; TRAPP complex subunit 6A |
| Observed Band | |
| Cell Pathway | Golgi apparatus, cis-Golgi network . Endoplasmic reticulum . |
| Tissue Specificity | Lung,Umbilical cord blood, |
| Function | function:May play a role in vesicular transport during the biogenesis of melanosomes.,similarity:Belongs to the TRAPP small subunits family. BET3 subfamily.,subunit:Part of the multisubunit TRAPP (transport protein particle) complex. Heterodimer with TRAPPC3., |
| Background | This gene encodes a component of the trafficking protein particle complex, which tethers transport vesicles to the cis-Golgi membrane. Loss of expression of the related gene in mouse affects coat and eye pigmentation, suggesting that the encoded protein may be involved in melanosome biogenesis. Alternatively spliced transcript variants encoding multiple isoforms have been observed for this gene. |

Nanjing BYabscience technology Co.,Ltd



[provided by RefSeq, Aug 2012],

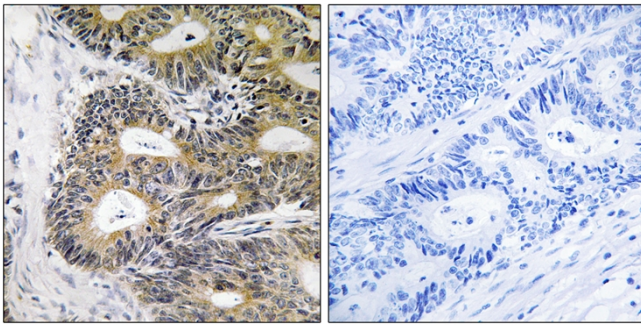
matters needing attention

Avoid repeated freezing and thawing!

Usage suggestions

This product can be used in immunological reaction related experiments. For more information, please consult technical personnel.

Products Images



Immunohistochemistry analysis of paraffin-embedded human colon carcinoma, using TRAPPC6A Antibody. The picture on the right is blocked with the synthesized peptide.

Nanjing BYabscience technology Co.,Ltd

网址: www.njbybio.com

官方热线: 025-5229-8998

监督电话: 15950492658