



# ABCG1 Polyclonal Antibody

<b>Catalog No</b>	BYab-00759
<b>Isotype</b>	IgG
<b>Reactivity</b>	Human;Mouse;Rat
<b>Applications</b>	WB;IHC;IF;ELISA
<b>Gene Name</b>	ABCG1
<b>Protein Name</b>	ATP-binding cassette sub-family G member 1
<b>Immunogen</b>	Synthesized peptide derived from ABCG1 . at AA range: 560-640
<b>Specificity</b>	ABCG1 Polyclonal Antibody detects endogenous levels of ABCG1 protein.
<b>Formulation</b>	Liquid in PBS containing 50% glycerol, 0.5% BSA and 0.02% sodium azide.
<b>Source</b>	Polyclonal, Rabbit,IgG
<b>Purification</b>	The antibody was affinity-purified from rabbit antiserum by affinity-chromatography using epitope-specific immunogen.
<b>Dilution</b>	WB: 1/500 - 1/2000. IHC-p: 1:100-300 ELISA: 1/10000.. IF 1:50-200
<b>Concentration</b>	1 mg/ml
<b>Purity</b>	≥90%
<b>Storage Stability</b>	-20°C/1 year
<b>Synonyms</b>	ABCG1; ABC8; WHT1; ATP-binding cassette sub-family G member 1; ATP-binding cassette transporter 8; White protein homolog
<b>Observed Band</b>	75kD
<b>Cell Pathway</b>	Endoplasmic reticulum membrane ; Multi-pass membrane protein . Golgi apparatus membrane ; Multi-pass membrane protein . Cell membrane . Predominantly localized in the intracellular compartments mainly associated with the endoplasmic reticulum (ER) and Golgi membranes.
<b>Tissue Specificity</b>	Expressed in several tissues. Expressed in macrophages; expression is increased in macrophages from patients with Tangier disease.
<b>Function</b>	alternative products:Additional isoforms seem to exist,disease:Overexpressed in macrophages from patients with Tangier disease compared to control macrophages. Expressed in foamy macrophages within the atherosclerotic plaque. May play a role in the cholesterol metabolism of macrophages in vitro and in the atherosclerotic plaque.,function:Transporter involved in macrophage lipid homeostasis. Is an active component of the macrophage lipid export complex. Could also be involved in intracellular lipid transport processes. The role in cellular lipid homeostasis may not be limited to macrophages.,induction:Strongly induced in monocyte-derived macrophages during cholesterol influx. Conversely, mRNA

**Nanjing BYabscience technology Co.,Ltd**



and protein expression are suppressed by lipid efflux. Induction is mediated by the liver X receptor/retinoid X receptor (LXR/RXR) pathway. Not induced by bacterial lipopolysaccharides (LPS). Repress

**Background**

The protein encoded by this gene is a member of the superfamily of ATP-binding cassette (ABC) transporters. ABC proteins transport various molecules across extra- and intra-cellular membranes. ABC genes are divided into seven distinct subfamilies (ABC1, MDR/TAP, MRP, ALD, OABP, GCN20, White). This protein is a member of the White subfamily. It is involved in macrophage cholesterol and phospholipids transport, and may regulate cellular lipid homeostasis in other cell types. Six alternative splice variants have been identified. [provided by RefSeq, Jul 2008],

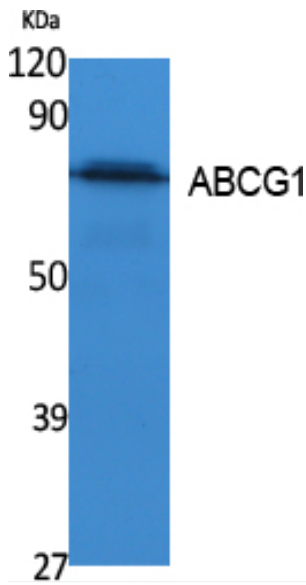
**matters needing attention**

Avoid repeated freezing and thawing!

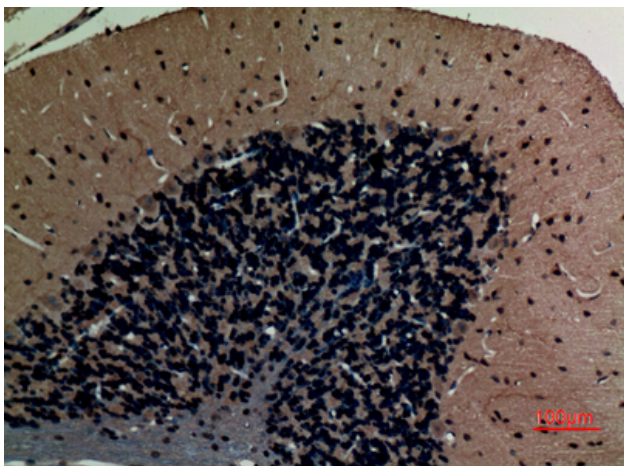
**Usage suggestions**

This product can be used in immunological reaction related experiments. For more information, please consult technical personnel.

**Products Images**

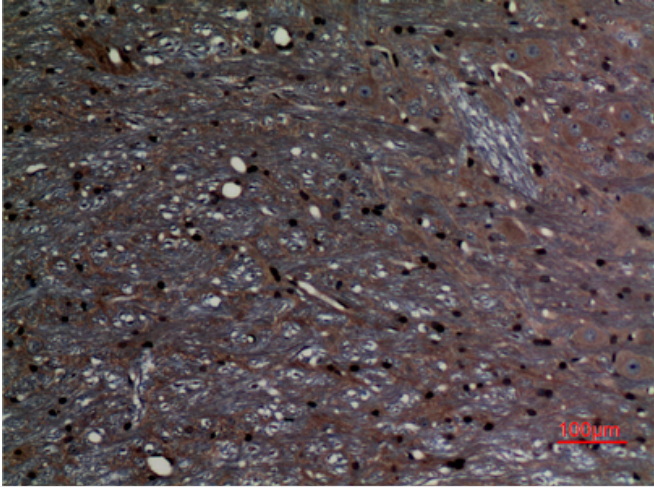


Western Blot analysis of extracts from K562 cells, using ABCG1 Polyclonal Antibody. Secondary antibody(catalog#:RS0002) was diluted at 1:20000



Immunohistochemical analysis of paraffin-embedded rat-brain, antibody was diluted at 1:100

Nanjing BYabscience technology Co.,Ltd



Immunohistochemical analysis of paraffin-embedded rat-brain, antibody was diluted at 1:100