



Nup88 Polyclonal Antibody

Catalog No	BYab-00760
Isotype	IgG
Reactivity	Human;Mouse
Applications	WB;ELISA
Gene Name	NUP88
Protein Name	Nuclear pore complex protein Nup88
Immunogen	Synthesized peptide derived from Nup88 . at AA range: 330-410
Specificity	Nup88 Polyclonal Antibody detects endogenous levels of Nup88 protein.
Formulation	Liquid in PBS containing 50% glycerol, 0.5% BSA and 0.02% sodium azide.
Source	Polyclonal, Rabbit,IgG
Purification	The antibody was affinity-purified from rabbit antiserum by affinity-chromatography using epitope-specific immunogen.
Dilution	Western Blot: 1/500 - 1/2000. ELISA: 1/20000. Not yet tested in other applications.
Concentration	1 mg/ml
Purity	≥90%
Storage Stability	-20°C/1 year
Synonyms	NUP88; Nuclear pore complex protein Nup88; 88 kDa nucleoporin; Nucleoporin Nup88
Observed Band	83kD
Cell Pathway	Nucleus, nuclear pore complex .
Tissue Specificity	Ubiquitous.
Function	function:Essential component of nuclear pore complex.,PTM:Phosphorylated upon DNA damage, probably by ATM or ATR.,subunit:Interacts with NUP214/CAN.,tissue specificity:Ubiquitous.,
Background	The nuclear pore complex is a massive structure that extends across the nuclear envelope, forming a gateway that regulates the flow of macromolecules between the nucleus and the cytoplasm. Nucleoporins, a family of 50 to 100 proteins, are the main components of the nuclear pore complex in eukaryotic cells. The protein encoded by this gene belongs to the nucleoporin family and is associated with the oncogenic nucleoporin CAN/Nup214 in a dynamic subcomplex. This protein is also overexpressed in a large number of malignant neoplasms and precancerous

Nanjing BYabscience technology Co.,Ltd



dysplasias. Alternative splicing results in multiple transcript variants encoding different isoforms. [provided by RefSeq, Mar 2016],

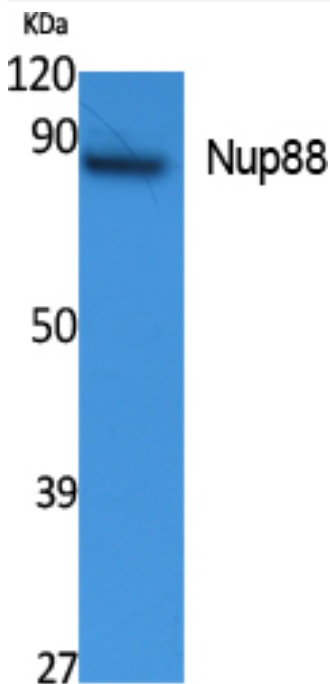
matters needing attention

Avoid repeated freezing and thawing!

Usage suggestions

This product can be used in immunological reaction related experiments. For more information, please consult technical personnel.

Products Images



Western Blot analysis of extracts from K562 cells, using Nup88 Polyclonal Antibody. Secondary antibody(catalog#:RS0002) was diluted at 1:20000

Nanjing BYabscience technology Co.,Ltd

网址: www.njbybio.com

官方热线: 025-5229-8998

监督电话: 15950492658