



KLF13 (Acetyl Lys166) rabbit pAb

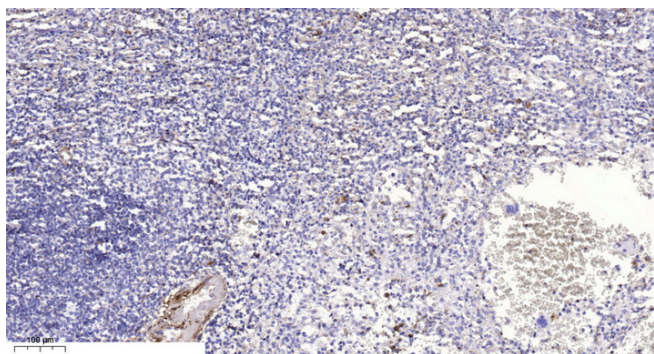
Catalog No	BYab-00913
Isotype	IgG
Reactivity	Human;Mouse
Applications	WB;IHC
Gene Name	KLF13 BTEB3 NSLP1
Protein Name	KLF13 (Acetyl Lys166)
Immunogen	Synthesized peptide derived from human KLF13 (Acetyl Lys166)
Specificity	This antibody detects endogenous levels of Human,Mouse KLF13 (Acetyl Lys166)
Formulation	Liquid in PBS containing 50% glycerol, 0.5% BSA and 0.02% sodium azide.
Source	Polyclonal, Rabbit,IgG
Purification	The antibody was affinity-purified from rabbit serum by affinity-chromatography using specific immunogen.
Dilution	WB 1:500-2000;IHC-p 1:50-300
Concentration	1 mg/ml
Purity	≥90%
Storage Stability	-20°C/1 year
Synonyms	Krueppel-like factor 13 (Basic transcription element-binding protein 3;BTE-binding protein 3;Novel Sp1-like zinc finger transcription factor 1;RANTES factor of late activated T-lymphocytes 1;RFLAT-1;Transcription factor BTEB3;Transcription factor NSLP1)
Observed Band	32kD
Cell Pathway	Nucleus.
Tissue Specificity	Ubiquitous.
Function	domain:The Ala/Pro-rich domain may contain discrete activation and repression subdomains and also can mediate protein-protein interactions..function:Represses transcription by binding to the BTE site, a GC-rich DNA element, in competition with the activator SP1. It also represses transcription by interacting with the corepressor Sin3A and HDAC1. Activates RANTES expression in T-cells..PTM:Phosphorylated..similarity:Belongs to the Sp1 C2H2-type zinc-finger protein family..similarity:Contains 3 C2H2-type zinc fingers..tissue specificity:Ubiquitous.,

Nanjing BYabs science technology Co.,Ltd



Background	KLF13 belongs to a family of transcription factors that contain 3 classical zinc finger DNA-binding domains consisting of a zinc atom tetrahedrally coordinated by 2 cysteines and 2 histidines (C2H2 motif). These transcription factors bind to GC-rich sequences and related GT and CACCC boxes (Schoy et al., 2000 [PubMed 11087666]).[supplied by OMIM, Mar 2008],
matters needing attention	Avoid repeated freezing and thawing!
Usage suggestions	This product can be used in immunological reaction related experiments. For more information, please consult technical personnel.

Products Images



Immunohistochemical analysis of paraffin-embedded human spleen. 1, Antibody was diluted at 1:200(4° overnight). 2, Tris-EDTA,pH9.0 was used for antigen retrieval. 3,Secondary antibody was diluted at 1:200(room temperature, 45min).