



Islet-1 Monoclonal Antibody

Catalog No	BYab-00993
Isotype	IgG
Reactivity	Human
Applications	WB;IHC;IF;ELISA
Gene Name	ISL1
Protein Name	Insulin gene enhancer protein ISL-1
Immunogen	Purified recombinant fragment of human Islet-1 expressed in E. Coli.
Specificity	Islet-1 Monoclonal Antibody detects endogenous levels of Islet-1 protein.
Formulation	Ascitic fluid containing 0.03% sodium azide,0.5% BSA, 50%glycerol.
Source	Monoclonal, Mouse
Purification	Affinity purification
Dilution	Western Blot: 1/500 - 1/2000. Immunohistochemistry: 1/200 - 1/1000. Immunofluorescence: 1/200 - 1/1000. ELISA: 1/10000. Not yet tested in other applications.
Concentration	1 mg/ml
Purity	≥90%
Storage Stability	-20°C/1 year
Synonyms	ISL1; Insulin gene enhancer protein ISL-1; Islet-1
Observed Band	
Cell Pathway	Nucleus .
Tissue Specificity	Expressed in subsets of neurons of the adrenal medulla and dorsal root ganglion, inner nuclear and ganglion cell layers in the retina, the pineal and some regions of the brain.
Function	function: Binds to one of the cis-acting domain of the insulin gene enhancer.,similarity: Contains 1 homeobox DNA-binding domain.,similarity: Contains 2 LIM zinc-binding domains.,tissue specificity: Expressed in subsets of neurons of the adrenal medulla and dorsal root ganglion, inner nuclear and ganglion cell layers in the retina, the pineal and some regions of the brain.,
Background	This gene encodes a member of the LIM/homeodomain family of transcription factors. The encoded protein binds to the enhancer region of the insulin gene, among others, and may play an important role in regulating insulin gene expression. The encoded protein is central to the development of pancreatic cell

Nanjing BYabscience technology Co.,Ltd



lineages and may also be required for motor neuron generation. Mutations in this gene have been associated with maturity-onset diabetes of the young. [provided by RefSeq, Jul 2008],

matters needing attention

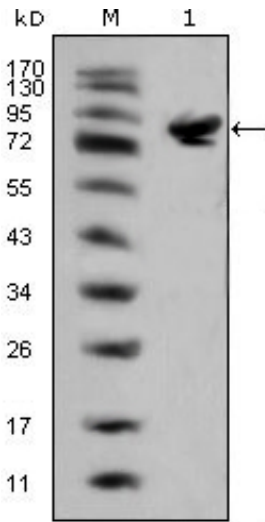
Avoid repeated freezing and thawing!

Usage suggestions

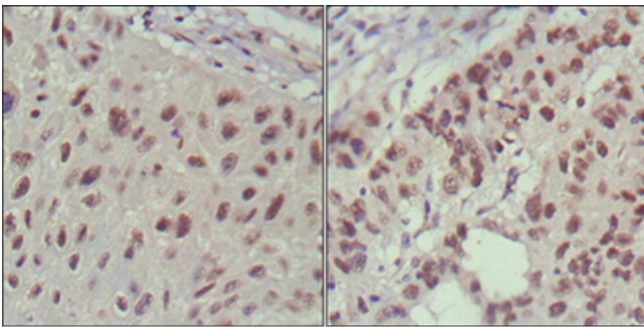
This product can be used in immunological reaction related experiments. For more information, please consult technical personnel.



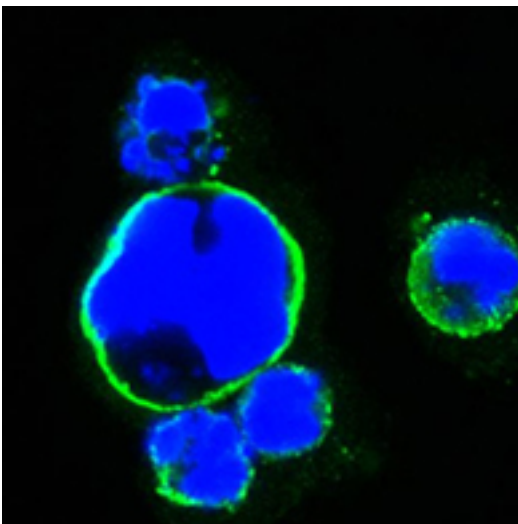
Products Images



Western Blot analysis using Islet-1 Monoclonal Antibody against full-length ISL1 (aa1-349)-hIgGFc transfected HEK293 cell lysate(1).



Immunohistochemistry analysis of paraffin-embedded human lung cancer (left) and cervical carcinoma (right), showing nuclear localization with DAB staining using Islet-1 Monoclonal Antibody.



Confocal immunofluorescence analysis of HEK293 cells transfected with full-length ISL1-hIgGFc using Islet-1 Monoclonal Antibody (green). Blue: DRAQ5 fluorescent DNA dye.