



HP1 α Monoclonal Antibody

Catalog No	BYab-01041
Isotype	IgG
Reactivity	Human;Mouse;Rat;Bovine;Dog;Pig
Applications	WB;IF
Gene Name	CBX5
Protein Name	Chromobox protein homolog 5
Immunogen	Purified recombinant human HP1 α protein fragments expressed in E.coli.
Specificity	HP1 α Monoclonal Antibody detects endogenous levels of HP1 α protein.
Formulation	Purified mouse monoclonal in buffer containing 0.1M Tris-Glycine (pH 7.4, 150 mM NaCl) with 0.2% sodium azide, 50% glycerol.
Source	Monoclonal, Mouse
Purification	Affinity purification
Dilution	Western Blot: 1/1000 - 1/2000. Immunofluorescence: 1/100 - 1/500. Not yet tested in other applications.
Concentration	1 mg/ml
Purity	$\geq 90\%$
Storage Stability	-20°C/1 year
Synonyms	CBX5; HP1A; Chromobox protein homolog 5; Antigen p25; Heterochromatin protein 1 homolog alpha; HP1 alpha
Observed Band	
Cell Pathway	Nucleus . Chromosome . Chromosome, centromere . Colocalizes with HNRNPU in the nucleus (PubMed:19617346). Component of centromeric and pericentromeric heterochromatin. Associates with chromosomes during mitosis. Associates specifically with chromatin during metaphase and anaphase. .
Tissue Specificity	Epithelium,Fetal brain cortex,Placenta,
Function	function:Component of heterochromatin. Recognizes and binds histone H3 tails methylated at 'Lys-9', leading to epigenetic repression. Can interact with lamin B receptor (LBR). This interaction can contribute to the association of the heterochromatin with the inner nuclear membrane. Involved in the formation of functional kinetochore through interaction with MIS12 complex proteins.,PTM:Phosphorylation of HP1 and LBR may be responsible for some of the alterations in chromatin organization and nuclear structure which occur at various times during the cell cycle (By similarity). Phosphorylated during interphase and possibly hyper-phosphorylated during mitosis.,similarity:Contains

Nanjing BYabscience technology Co.,Ltd



2 chromo domains.,subcellular location:Component of centromeric and pericentromeric heterochromatin. Associates with chromosomes during mitosis. Associates specifically with chromatin during metaphase and anaphase.,

Background

This gene encodes a highly conserved nonhistone protein, which is a member of the heterochromatin protein family. The protein is enriched in the heterochromatin and associated with centromeres. The protein has a single N-terminal chromodomain which can bind to histone proteins via methylated lysine residues, and a C-terminal chromo shadow-domain (CSD) which is responsible for the homodimerization and interaction with a number of chromatin-associated nonhistone proteins. The encoded product is involved in the formation of functional kinetochore through interaction with essential kinetochore proteins. The gene has a pseudogene located on chromosome 3. Multiple alternatively spliced variants, encoding the same protein, have been identified. [provided by RefSeq, Jul 2008],

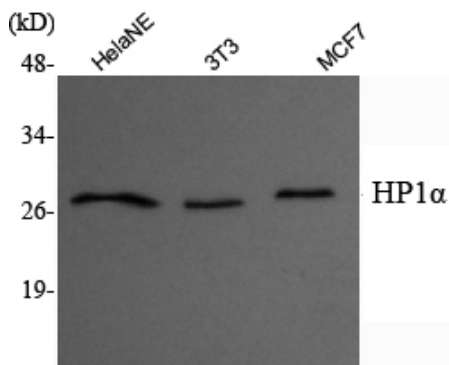
matters needing attention

Avoid repeated freezing and thawing!

Usage suggestions

This product can be used in immunological reaction related experiments. For more information, please consult technical personnel.

Products Images



Western Blot analysis using HP1 α Monoclonal Antibody against HeLa nuclear extract, 3T3, MCF7 whole cell lysate.