



SMC1 Monoclonal Antibody

Catalog No	BYab-01052
Isotype	IgG
Reactivity	Human;Mouse;Rat;Pig
Applications	WB;IHC;IF;FCM
Gene Name	SMC1A
Protein Name	Structural maintenance of chromosomes protein 1A
Immunogen	Purified recombinant human SMC1 (N-terminus) protein fragments expressed in E.coli.
Specificity	SMC1 Monoclonal Antibody detects endogenous levels of SMC1 protein.
Formulation	Purified mouse monoclonal in buffer containing 0.1M Tris-Glycine (pH 7.4, 150 mM NaCl) with 0.2% sodium azide, 50% glycerol.
Source	Monoclonal, Mouse
Purification	Affinity purification
Dilution	WB: 1/1000 - 1/2000. IHC: 1/500 - 1/1000. Flow cytometry: 1/100 - 1/200.. IF 1:50-200
Concentration	1 mg/ml
Purity	≥90%
Storage Stability	-20°C/1 year
Synonyms	SMC1A; DXS423E; KIAA0178; SB1.8; SMC1; SMC1L1; Structural maintenance of chromosomes protein 1A; SMC protein 1A; SMC-1-alpha; SMC-1A; Sb1.8
Observed Band	
Cell Pathway	Nucleus . Chromosome . Chromosome, centromere, kinetochore . Associates with chromatin. Before prophase it is scattered along chromosome arms. During prophase, most of cohesin complexes dissociate from chromatin probably because of phosphorylation by PLK, except at centromeres, where cohesin complexes remain. At anaphase, the RAD21 subunit of the cohesin complex is cleaved, leading to the dissociation of the complex from chromosomes, allowing chromosome separation. In germ cells, cohesin complex dissociates from chromatin at prophase I, and may be replaced by a meiosis-specific cohesin complex. The phosphorylated form on Ser-957 and Ser-966 associates with chromatin during G1/S/G2 phases but not during M phase, suggesting that phosphorylation does not regulate cohesin function. Integral co
Tissue Specificity	Aorta,Bone marrow,Brain,Epithelium,Fibroblast,Testis,Uterus endothe

Nanjing BYabscience technology Co.,Ltd



Function

disease:Defects in SMC1A are the cause of Cornelia de Lange syndrome type 2 (CDLS2) [MIM:300590]; also known as Cornelia de Lange syndrome X-linked. CDLS is a clinically heterogeneous developmental disorder associated with malformations affecting multiple systems. CDLS is characterized by facial dysmorphisms, abnormal hands and feet, growth delay, cognitive retardation and various other malformations including gastroesophageal dysfunction and cardiac, ophthalmologic and genitourinary anomalies. domain:The flexible hinge domain, which separates the large intramolecular coiled coil regions, allows the heterotypic interaction with the corresponding domain of SMC3, forming a V-shaped heterodimer. The two heads of the heterodimer are then connected by different ends of the cleavable RAD21 protein, forming a ring structure. function:Involved in chromosome cohesion during cell cycle and in DNA

Background

structural maintenance of chromosomes 1A(SMC1A) Homo sapiens Proper cohesion of sister chromatids is a prerequisite for the correct segregation of chromosomes during cell division. The cohesin multiprotein complex is required for sister chromatid cohesion. This complex is composed partly of two structural maintenance of chromosomes (SMC) proteins, SMC3 and either SMC1B or the protein encoded by this gene. Most of the cohesin complexes dissociate from the chromosomes before mitosis, although those complexes at the kinetochore remain. Therefore, the encoded protein is thought to be an important part of functional kinetochores. In addition, this protein interacts with BRCA1 and is phosphorylated by ATM, indicating a potential role for this protein in DNA repair. This gene, which belongs to the SMC gene family, is located in an area of the X-chromosome that escapes X inactivation. Mutations in this gene result in Cornelia de Lange syndrome. Altern

matters needing attention

Avoid repeated freezing and thawing!

Usage suggestions

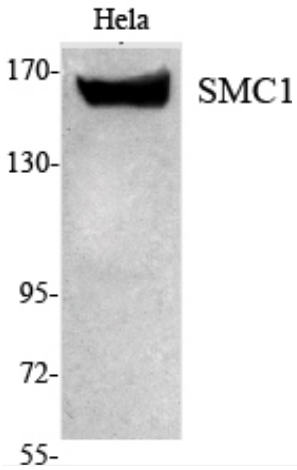
This product can be used in immunological reaction related experiments. For more information, please consult technical personnel.

Nanjing BYabscience technology Co.,Ltd

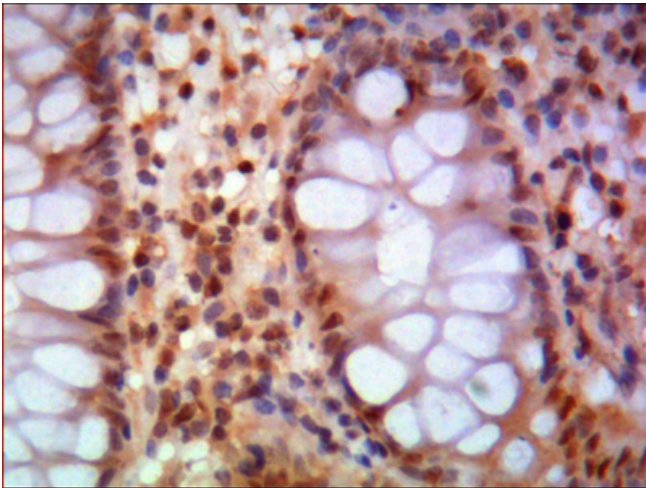


Products Images

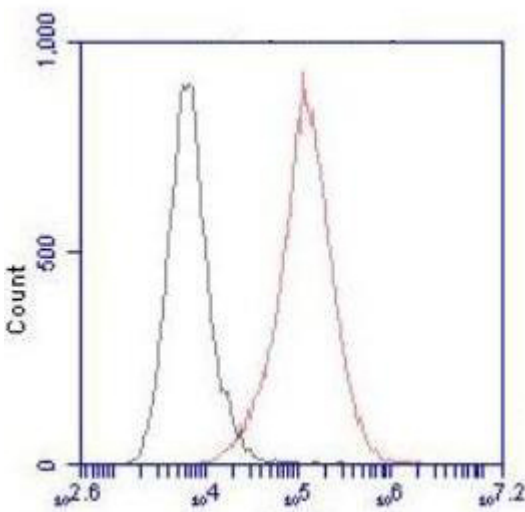
(kD)



Western Blot analysis using SMC1 Monoclonal Antibody against HeLa nuclear extract.



Immunohistochemistry analysis of paraffin-embedded human colon using SMC1 Monoclonal Antibody.



Flow cytometric analysis of HeLa cells stained with SMC1 Monoclonal Antibody (red), followed by FITC-conjugated goat anti-mouse IgG. Black line histogram represents the isotype control, normal mouse IgG.

Nanjing BYabscience technology Co.,Ltd

网址: www.njbybio.com

官方热线: 025-5229-8998

监督电话: 15950492658