



# KAP1/TIF1 $\beta$ mouse mAb

Catalog No	BYab-01072
Isotype	IgG
Reactivity	Human
Applications	WB;ICC;IHC;IP
Gene Name	trim28
Protein Name	
Immunogen	Purified recombinant human KAP1 / TIF1 beta protein fragments expressed in E.coli.
Specificity	This antibody detects endogenous levels of KAP1 / TIF1 beta and does not cross-react with related proteins.
Formulation	Liquid in PBS containing 50% glycerol, 0.5% BSA and 0.02% sodium azide.
Source	Monoclonal, Mouse
Purification	The antibody was affinity-purified from mouse ascites by affinity-chromatography using epitope-specific immunogen.
Dilution	wb 1:1000 icc 1:100
Concentration	1 mg/ml
Purity	≥90%
Storage Stability	-20°C/1 year
Synonyms	E3 SUMO protein ligase TRIM28;E3 SUMO-protein ligase TRIM28;FLJ29029;KAP 1;KAP-1;KRAB associated protein 1;KRAB interacting protein 1;KRAB-associated protein 1;KRAB-interacting protein 1;KRIP 1;KRIP-1;KRIP1;Nuclear corepressor KAP 1;Nuclear corepressor KAP-1;RING finger protein 96;RNF96;TF1B;TIF1 beta;TIF1-beta;TIF1B;TIF1B_HUMAN; Transcription intermediary factor 1 beta;Transcription intermediary factor 1-beta; TRIM28;Tripartite motif containing 28;tripartite motif containing protein 28;Tripartite motif-containing protein 28.
Observed Band	110kD
Cell Pathway	Nucleus . Associated with centromeric heterochromatin during cell differentiation through CBX1. .
Tissue Specificity	Expressed in all tissues tested including spleen, thymus, prostate, testis, ovary, small intestine, colon and peripheral blood leukocytes.

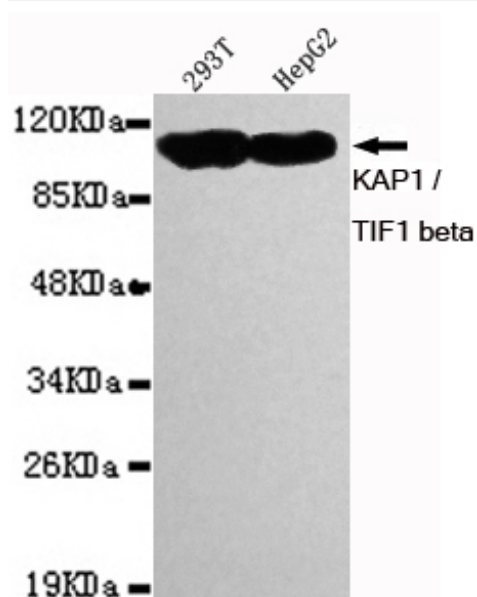
Nanjing BYabscience technology Co.,Ltd



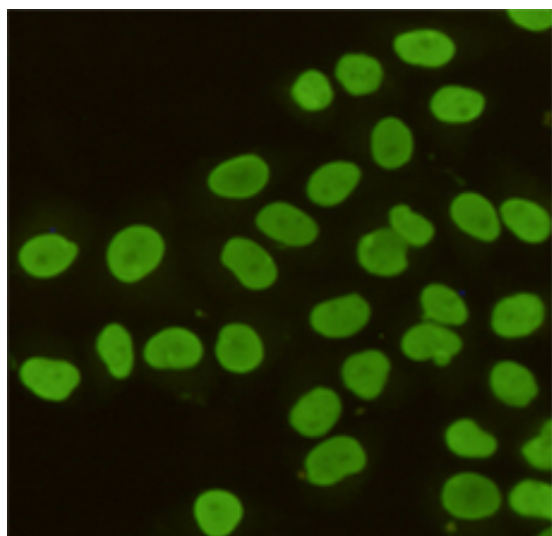
Function	domain:Contains one Pro-Xaa-Val-Xaa-Leu (PxVxL) motif, which is required for interaction with chromoshadow domains. This motif requires additional residues -7, -6, +4 and +5 of the central Val which contact the chromoshadow domain.,domain:The HP1 box is both necessary and sufficient for HP1 binding. The RING finger domain and the B-box domains mediate interaction with CEBPB. The PHD domain enhances the CEBPB transcriptional activity.,function:Forms a complex with a KRAB-domain transcription factor and increases the efficiency of KRAB-mediated repression. Silences transcription through an interaction with HP1 proteins. Acts as a corepressor of transcription for the KRAB zinc finger proteins and as a moderator of the repression activity. May play a role as a coactivator for CEBPB and NR3C1 in the transcriptional activation of the Alpha-1-acid glycoprotein gene.,PTM:Phosphorylated upon DNA
Background	The protein encoded by this gene mediates transcriptional control by interaction with the Kruppel-associated box repression domain found in many transcription factors. The protein localizes to the nucleus and is thought to associate with specific chromatin regions. The protein is a member of the tripartite motif family. This tripartite motif includes three zinc-binding domains, a RING, a B-box type 1 and a B-box type 2, and a coiled-coil region. [provided by RefSeq, Jul 2008],
matters needing attention	Avoid repeated freezing and thawing!
Usage suggestions	This product can be used in immunological reaction related experiments. For more information, please consult technical personnel.



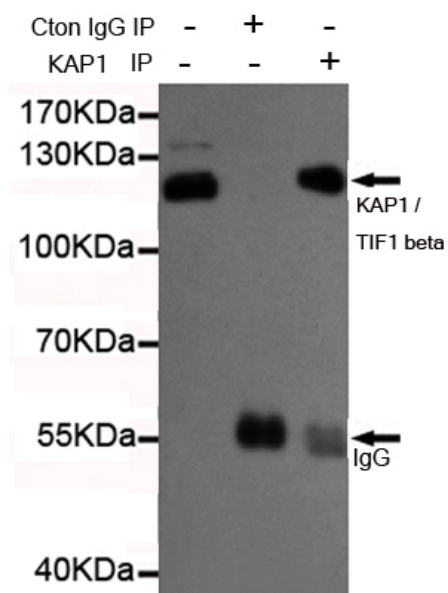
## Products Images



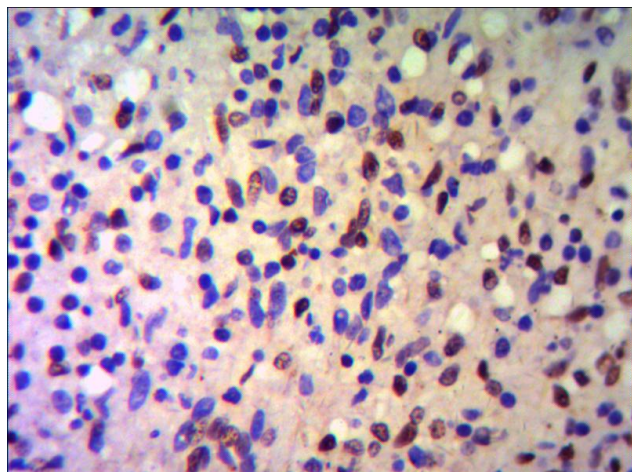
Western blot detection of KAP1 / TIF1 beta in 293T and HepG2 cell lysates using KAP1 / TIF1 beta mouse mAb (1:1000 diluted). Observed band size: 110KDa.



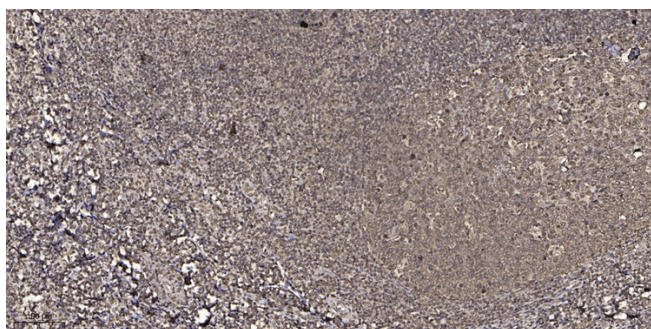
Immunocytochemistry staining of HeLa cells fixed with 4% Paraformaldehyde and using anti-KAP1 / TIF1 beta mouse mAb (dilution 1:100).



Immunoprecipitation analysis of Hela cell lysates using KAP1 / TIF1 beta mouse mAb.



IHC of paraffin-embedded human Spleen using anti-KAP1 / TIF1 beta diluted 1/500-1/1000.



Immunohistochemical analysis of paraffin-embedded human tonsil. 1, Antibody was diluted at 1:200(4° overnight). 2, Tris-EDTA,pH9.0 was used for antigen retrieval. 3,Secondary antibody was diluted at 1:200(room temperature, 45min).