



STAT1 mouse mAb

Catalog No	BYab-01101
Isotype	IgG
Reactivity	Human;Monkey
Applications	WB;IP
Gene Name	stat1
Protein Name	
Immunogen	Purified recombinant human STAT1 protein fragments expressed in E.coli
Specificity	This antibody detects endogenous levels of total STAT1 and does not cross-react with related proteins.
Formulation	Liquid in PBS containing 50% glycerol, 0.5% BSA and 0.02% sodium azide.
Source	Monoclonal, Mouse
Purification	The antibody was affinity-purified from mouse ascites by affinity-chromatography using epitope-specific immunogen.
Dilution	wb dilution 1:1000
Concentration	1 mg/ml
Purity	≥90%
Storage Stability	-20°C/1 year
Synonyms	Signal transducer and activator of transcription 1 91kD;DKFZp686B04100;ISGF 3;ISGF-3;OTTHUMP00000163552;OTTHUMP00000165046; OTTHUMP00000165047;OTTHUMP00000205845;Signal transducer and activator of transcription 1 91kDa;Signal transducer and activator of transcription 1 alpha/beta;Signal transducer and activator of transcription 1;Signal transducer and activator of transcription 1, 91kD; Signal transducer and activator of transcription 1-alpha/beta;Signal Transducer and Activator of Transcription 1;STAT 1;STAT 91;Stat1; STAT1_HUMAN;STAT91;Transcription factor ISGF 3 components p91 p84;Transcription factor ISGF-3 components p91/p84.
Observed Band	91kD
Cell Pathway	Cytoplasm . Nucleus . Translocated into the nucleus upon tyrosine phosphorylation and dimerization, in response to IFN-gamma and signaling by activated FGFR1, FGFR2, FGFR3 or FGFR4 (PubMed:15322115). Monomethylation at Lys-525 is required for phosphorylation at Tyr-701 and translocation into the nucleus (PubMed:28753426). Translocates into the nucleus in response to interferon-beta stimulation (PubMed:26479788). .

Nanjing BYabscience technology Co.,Ltd

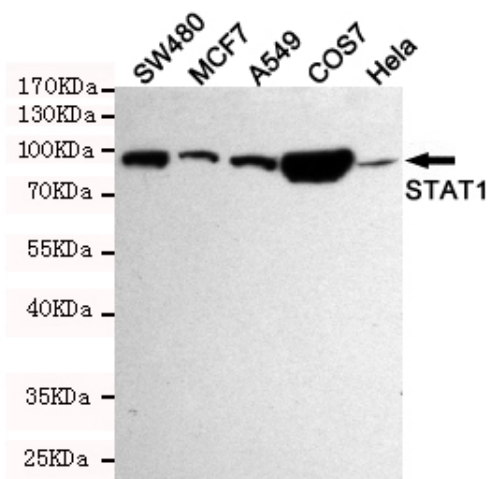


Tissue Specificity	B-cell,Brain,Retina,Testis,
Function	disease:Defects in STAT1 are a cause of mendelian susceptibility to mycobacterial disease (MSMD) [MIM:209950]; also known as familial disseminated atypical mycobacterial infection. This rare condition confers predisposition to illness caused by moderately virulent mycobacterial species, such as Bacillus Calmette-Guerin (BCG) vaccine and environmental non-tuberculous mycobacteria, and by the more virulent Mycobacterium tuberculosis. Other microorganisms rarely cause severe clinical disease in individuals with susceptibility to mycobacterial infections, with the exception of Salmonella which infects less than 50% of these individuals. The pathogenic mechanism underlying MSMD is the impairment of interferon-gamma mediated immunity whose severity determines the clinical outcome. Some patients die of overwhelming mycobacterial disease with lepromatous-like lesions in early childhood, whereas
Background	The protein encoded by this gene is a member of the STAT protein family. In response to cytokines and growth factors, STAT family members are phosphorylated by the receptor associated kinases, and then form homo- or heterodimers that translocate to the cell nucleus where they act as transcription activators. This protein can be activated by various ligands including interferon-alpha, interferon-gamma, EGF, PDGF and IL6. This protein mediates the expression of a variety of genes, which is thought to be important for cell viability in response to different cell stimuli and pathogens. Two alternatively spliced transcript variants encoding distinct isoforms have been described. [provided by RefSeq, Jul 2008],
matters needing attention	Avoid repeated freezing and thawing!
Usage suggestions	This product can be used in immunological reaction related experiments. For more information, please consult technical personnel.

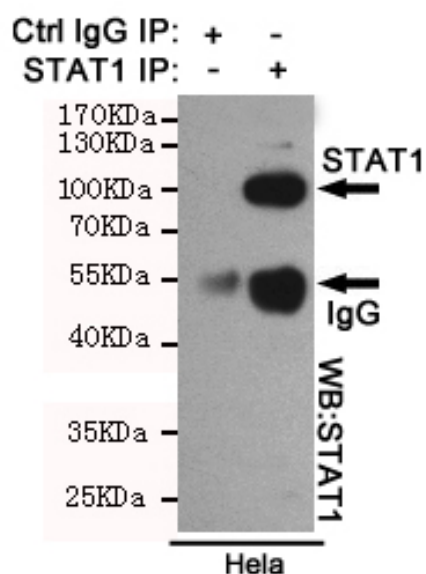
Nanjing BYabscience technology Co.,Ltd



Products Images



Western blot detection of STAT1 in HeLa, MCF7, COS7, SW480 and A549 cell lysates using STAT1 mouse mAb (1:1000 diluted). Predicted band size: 91KDa. Observed band size: 91KDa.



Immunoprecipitation analysis of HeLa cell lysates using STAT1 mouse mAb.