



TERT (phospho Ser824) Polyclonal Antibody

Catalog No	BYab-01314
Isotype	IgG
Reactivity	Human;Rat;Mouse;
Applications	WB;IHC;IF;ELISA
Gene Name	TERT
Protein Name	Telomerase reverse transcriptase
Immunogen	The antiserum was produced against synthesized peptide derived from human Telomerase around the phosphorylation site of Ser824. AA range:796-845
Specificity	Phospho-TERT (S824) Polyclonal Antibody detects endogenous levels of TERT protein only when phosphorylated at S824.
Formulation	Liquid in PBS containing 50% glycerol, 0.5% BSA and 0.02% sodium azide.
Source	Polyclonal, Rabbit,IgG
Purification	The antibody was affinity-purified from rabbit antiserum by affinity-chromatography using epitope-specific immunogen.
Dilution	WB: 1/500 - 1/2000. IHC: 1/100 - 1/300. ELISA: 1/10000.. IF 1:50-200
Concentration	1 mg/ml
Purity	≥90%
Storage Stability	-20°C/1 year
Synonyms	TERT; EST2; TCS1; TRT; Telomerase reverse transcriptase; HEST2; Telomerase catalytic subunit; Telomerase-associated protein 2; TP2
Observed Band	130kD
Cell Pathway	Nucleus, nucleolus . Nucleus, nucleoplasm. Nucleus. Chromosome, telomere. Cytoplasm. Nucleus, PML body. Shuttling between nuclear and cytoplasm depends on cell cycle, phosphorylation states, transformation and DNA damage. Diffuse localization in the nucleoplasm. Enriched in nucleoli of certain cell types. Translocated to the cytoplasm via nuclear pores in a CRM1/RAN-dependent manner involving oxidative stress-mediated phosphorylation at Tyr-707. Dephosphorylation at this site by SHP2 retains TERT in the nucleus. Translocated to the nucleus by phosphorylation by AKT.
Tissue Specificity	Expressed at a high level in thymocyte subpopulations, at an intermediate level in tonsil T-lymphocytes, and at a low to undetectable level in peripheral blood T-lymphocytes.
Function	catalytic activity:Deoxynucleoside triphosphate + DNA(n) = diphosphate + DNA(n+1).,disease:Activation of telomerase has been implicated in cell immortalization and cancer cell pathogenesis.,disease:Defects in TERT are a

Nanjing BYabscience technology Co.,Ltd



cause of dyskeratosis congenita autosomal dominant (ADDKC) [MIM:127550]; also known as dyskeratosis congenita Scoggins type. ADDKC is a rare, progressive bone marrow failure syndrome characterized by the triad of reticulated skin hyperpigmentation, nail dystrophy, and mucosal leukoplakia. Early mortality is often associated with bone marrow failure, infections, fatal pulmonary complications, or malignancy. Defects in TERT are associated with susceptibility to aplastic anemia (AA) [MIM:609135]. AA is a rare disease in which the reduction of the circulating blood cells results from damage to the stem cell pool in bone marrow. In most patients, the stem cell lesion is

Background

Telomerase is a ribonucleoprotein polymerase that maintains telomere ends by addition of the telomere repeat TTAGGG. The enzyme consists of a protein component with reverse transcriptase activity, encoded by this gene, and an RNA component which serves as a template for the telomere repeat. Telomerase expression plays a role in cellular senescence, as it is normally repressed in postnatal somatic cells resulting in progressive shortening of telomeres. Deregulation of telomerase expression in somatic cells may be involved in oncogenesis. Studies in mouse suggest that telomerase also participates in chromosomal repair, since de novo synthesis of telomere repeats may occur at double-stranded breaks. Alternatively spliced variants encoding different isoforms of telomerase reverse transcriptase have been identified; the full-length sequence of some variants has not been determined. Alternative sp

matters needing attention

Avoid repeated freezing and thawing!

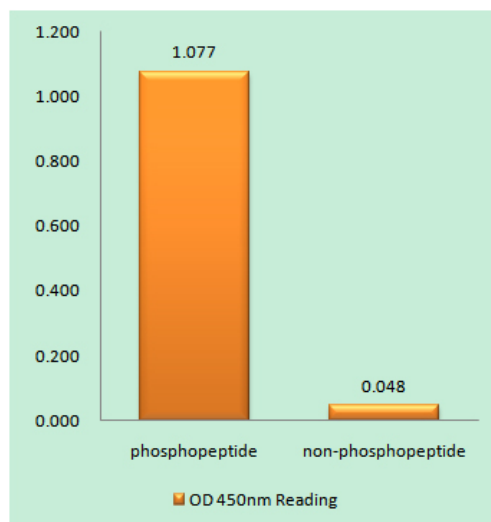
Usage suggestions

This product can be used in immunological reaction related experiments. For more information, please consult technical personnel.

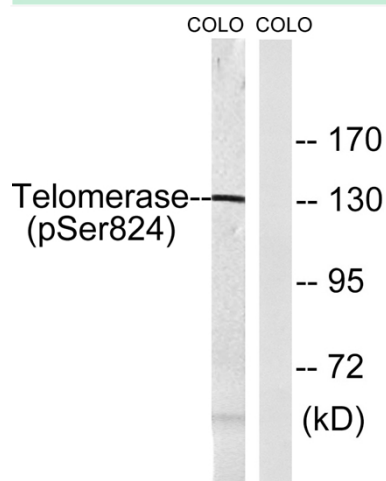
Nanjing BYabscience technology Co.,Ltd



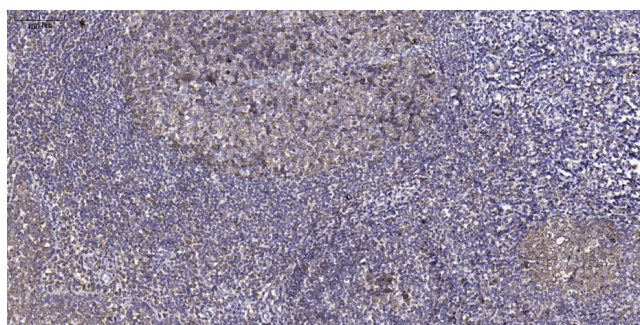
Products Images



Enzyme-Linked Immunosorbent Assay
(Phospho-ELISA) for Immunogen Phosphopeptide
(Phospho-left) and Non-Phosphopeptide
(Phospho-right), using Telomerase (Phospho-Ser824)
Antibody



Western blot analysis of lysates from COLO205 cells,
using Telomerase (Phospho-Ser824) Antibody. The
lane on the right is blocked with the phospho peptide.



Immunohistochemical analysis of paraffin-embedded
human tonsil. 1, Antibody was diluted at 1:200(4°
overnight). 2, Tris-EDTA,pH9.0 was used for antigen
retrieval. 3,Secondary antibody was diluted at
1:200(room temperature, 45min).

Nanjing BYabscience technology Co.,Ltd