



9G8 Polyclonal Antibody

Catalog No	BYab-01515
Isotype	IgG
Reactivity	Human;Mouse
Applications	WB;IHC;IF;ELISA
Gene Name	SRSF7
Protein Name	Serine/arginine-rich splicing factor 7
Immunogen	The antiserum was produced against synthesized peptide derived from human SFRS7. AA range:61-110
Specificity	9G8 Polyclonal Antibody detects endogenous levels of 9G8 protein.
Formulation	Liquid in PBS containing 50% glycerol, 0.5% BSA and 0.02% sodium azide.
Source	Polyclonal, Rabbit,IgG
Purification	The antibody was affinity-purified from rabbit antiserum by affinity-chromatography using epitope-specific immunogen.
Dilution	WB: 1/500 - 1/2000. IHC: 1/100 - 1/300. ELISA: 1/40000.. IF 1:50-200
Concentration	1 mg/ml
Purity	≥90%
Storage Stability	-20°C/1 year
Synonyms	SRSF7; SFRS7; Serine/arginine-rich splicing factor 7; Splicing factor 9G8; Splicing factor; arginine/serine-rich 7
Observed Band	35kD
Cell Pathway	Nucleus . Cytoplasm .
Tissue Specificity	Brain, liver, kidney and lung.
Function	alternative products:Isoforms, often lacking the RS domain and differentially expressed in fetal tissues, may be involved in modulation of 9G8 function,function:Required for pre-mRNA splicing. Can also modulate alternative splicing in vitro.,PTM:Extensively phosphorylated on serine residues in the RS domain.,similarity:Belongs to the splicing factor SR family.,similarity:Contains 1 CCHC-type zinc finger.,similarity:Contains 1 RRM (RNA recognition motif) domain.,subunit:Found in large molecular weight complexes containing CCNL1 and the p110 isoforms of either CDC2L1 or CDC2L2. Interacts with CCNL2 and CPSF6.,tissue specificity:Brain, liver, kidney and lung.,

Nanjing BYabscience technology Co.,Ltd

**Background**

The protein encoded by this gene is a member of the serine/arginine (SR)-rich family of pre-mRNA splicing factors, which constitute part of the spliceosome. Each of these factors contains an RNA recognition motif (RRM) for binding RNA and an RS domain for binding other proteins. The RS domain is rich in serine and arginine residues and facilitates interaction between different SR splicing factors. In addition to being critical for mRNA splicing, the SR proteins have also been shown to be involved in mRNA export from the nucleus and in translation. Two transcript variants encoding different isoforms have been found for this gene. [provided by RefSeq, Sep 2010],

matters needing attention

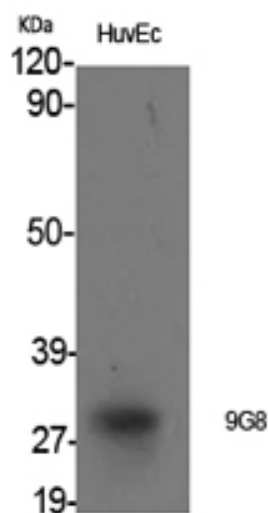
Avoid repeated freezing and thawing!

Usage suggestions

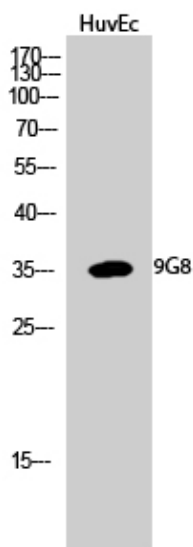
This product can be used in immunological reaction related experiments. For more information, please consult technical personnel.



Products Images



Western Blot analysis of various cells using 9G8 Polyclonal Antibody cells nucleus extracted by Minute TM Cytoplasmic and Nuclear Fractionation kit (SC-003, Inventbiotech, MN, USA).



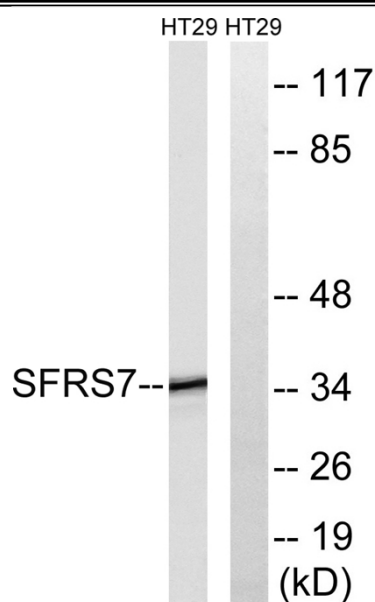
Western Blot analysis of HuvEc cells using 9G8 Polyclonal Antibody cells nucleus extracted by Minute TM Cytoplasmic and Nuclear Fractionation kit (SC-003, Inventbiotech, MN, USA).

Nanjing BYabs science technology Co.,Ltd

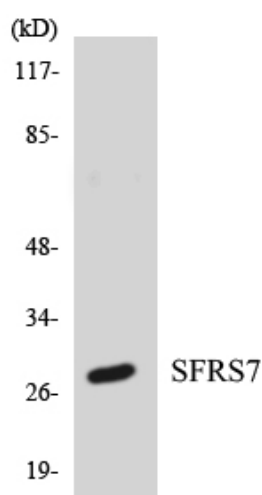
网址: www.njbybio.com

官方热线: 025-5229-8998

监督电话: 15950492658



Western blot analysis of lysates from HT-29 cells, using SFRS7 Antibody. The lane on the right is blocked with the synthesized peptide.



Western blot analysis of the lysates from HT-29 cells using SFRS7 antibody.



Immunohistochemical analysis of paraffin-embedded human tonsil. 1, Tris-EDTA, pH 9.0 was used for antigen retrieval. 2 Antibody was diluted at 1:200 (4° overnight). 3, Secondary antibody was diluted at 1:200 (room temperature, 45 min).