



APOBEC3D/F Polyclonal Antibody

Catalog No	BYab-01535
Isotype	IgG
Reactivity	Human;Monkey
Applications	WB;IHC;IF;ELISA
Gene Name	APOBEC3D/APOBEC3F
Protein Name	Probable DNA dC->dU-editing enzyme APOBEC-3D/F
Immunogen	The antiserum was produced against synthesized peptide derived from human APOBEC3D/F. AA range:232-281
Specificity	APOBEC3D/F Polyclonal Antibody detects endogenous levels of APOBEC3D/F protein.
Formulation	Liquid in PBS containing 50% glycerol, 0.5% BSA and 0.02% sodium azide.
Source	Polyclonal, Rabbit,IgG
Purification	The antibody was affinity-purified from rabbit antiserum by affinity-chromatography using epitope-specific immunogen.
Dilution	WB: 1/500 - 1/2000. IHC: 1/100 - 1/300. ELISA: 1/40000.. IF 1:50-200
Concentration	1 mg/ml
Purity	≥90%
Storage Stability	-20°C/1 year
Synonyms	APOBEC3D; Probable DNA dC->dU-editing enzyme APOBEC-3D; APOBEC3F; DNA dC->dU-editing enzyme APOBEC-3F; Apolipoprotein B mRNA-editing enzyme catalytic polypeptide-like 3F
Observed Band	40kD
Cell Pathway	Cytoplasm. Cytoplasm, P-body.
Tissue Specificity	Expressed in lymphoid organs. Also detected in non-lymphoid tissues including lung.
Function	cofactor:Zinc.,function:Unknown. Unable to reduce HIV-1 infectivity in vitro.,miscellaneous:It is one of seven related genes or pseudogenes found in a cluster, thought to result from gene duplication, on chromosome 22.,similarity:Belongs to the cytidine and deoxycytidylate deaminase family.,
Background	This gene is a member of the cytidine deaminase gene family. It is one of a group of related genes found in a cluster, thought to result from gene duplication, on chromosome 22. Members of the cluster encode proteins that are structurally and functionally related to the C to U RNA-editing cytidine deaminase APOBEC1 and

Nanjing BYabscience technology Co.,Ltd



inhibit retroviruses, such as HIV, by deaminating cytosine residues in nascent retroviral cDNA. [provided by RefSeq, Jul 2008],

matters needing attention

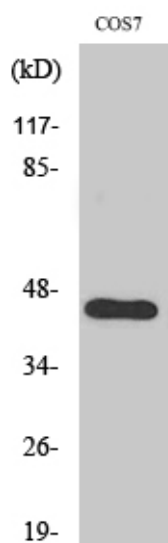
Avoid repeated freezing and thawing!

Usage suggestions

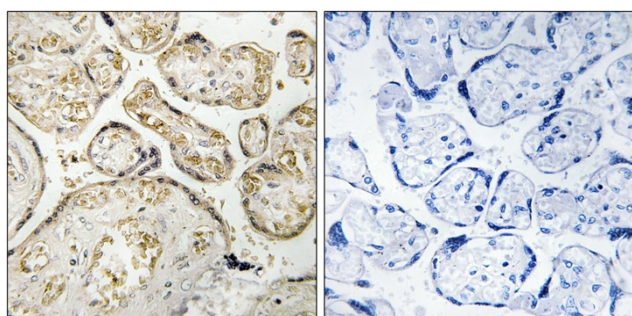
This product can be used in immunological reaction related experiments. For more information, please consult technical personnel.



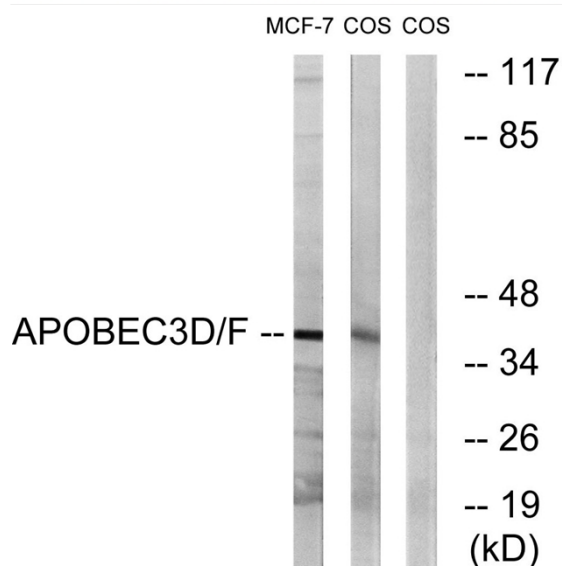
Products Images



Western Blot analysis of various cells using APOBEC3D/F Polyclonal Antibody



Immunohistochemistry analysis of paraffin-embedded human placenta tissue, using APOBEC3D/F Antibody. The picture on the right is blocked with the synthesized peptide.



Western blot analysis of lysates from COS7 and MCF-7 cells, using APOBEC3D/F Antibody. The lane on the right is blocked with the synthesized peptide.

Nanjing BYabs science technology Co.,Ltd

网址: www.njbybio.com

官方热线: 025-5229-8998

监督电话: 15950492658