



ATF-7 Polyclonal Antibody

Catalog No	BYab-01557
Isotype	IgG
Reactivity	Human;Mouse
Applications	WB;IHC;IF;ELISA
Gene Name	ATF7
Protein Name	Cyclic AMP-dependent transcription factor ATF-7
Immunogen	The antiserum was produced against synthesized peptide derived from human ATF7. AA range:41-90
Specificity	ATF-7 Polyclonal Antibody detects endogenous levels of ATF-7 protein.
Formulation	Liquid in PBS containing 50% glycerol, 0.5% BSA and 0.02% sodium azide.
Source	Polyclonal, Rabbit,IgG
Purification	The antibody was affinity-purified from rabbit antiserum by affinity-chromatography using epitope-specific immunogen.
Dilution	Western Blot: 1/500 - 1/2000. Immunohistochemistry: 1/100 - 1/300. Immunofluorescence: 1/200 - 1/1000. ELISA: 1/20000. Not yet tested in other applications.
Concentration	1 mg/ml
Purity	≥90%
Storage Stability	-20°C/1 year
Synonyms	ATF7; ATFA; Cyclic AMP-dependent transcription factor ATF-7; cAMP-dependent transcription factor ATF-7; Activating transcription factor 7; Transcription factor ATF-A
Observed Band	52kD
Cell Pathway	Nucleus . Nucleus, nucleoplasm . Chromosome, telomere . Mainly nucleoplasmic. Restricted distribution to the perinuclear region. The sumoylated form locates to the nuclear periphery.; [Isoform 5]: Cytoplasm .
Tissue Specificity	Expressed in various tissues including heart, brain, placenta, lung and skeletal muscle. Highest levels in skeletal muscle. Lowest in lung and placenta. ; [Isoform 4]: Strongly expressed in skeletal muscle. Also expressed at lower levels in heart and lung.
Function	function: Binds the cAMP response element (CRE) (consensus: 5'-GTGACGT[AG][AG]-3'), a sequence present in many viral and cellular promoters.,similarity: Belongs to the bZIP family.,similarity: Contains 1 bZIP domain.,similarity: Contains 1 C2H2-type zinc finger.,subunit: Binds DNA as a

Nanjing BYabscience technology Co.,Ltd



dimer.,

Background

function: Binds the cAMP response element (CRE) (consensus: 5'-GTGACGT[AG][AG]-3'), a sequence present in many viral and cellular promoters., similarity: Belongs to the bZIP family., similarity: Contains 1 bZIP domain., similarity: Contains 1 C2H2-type zinc finger., subunit: Binds DNA as a dimer.,

matters needing attention

Avoid repeated freezing and thawing!

Usage suggestions

This product can be used in immunological reaction related experiments. For more information, please consult technical personnel.

Nanjing BYabscience technology Co.,Ltd

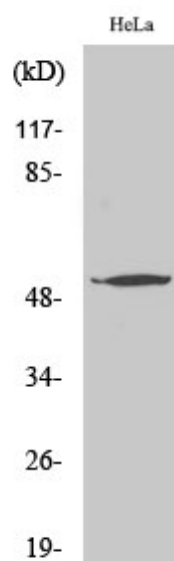
网址: www.njbybio.com

官方热线: 025-5229-8998

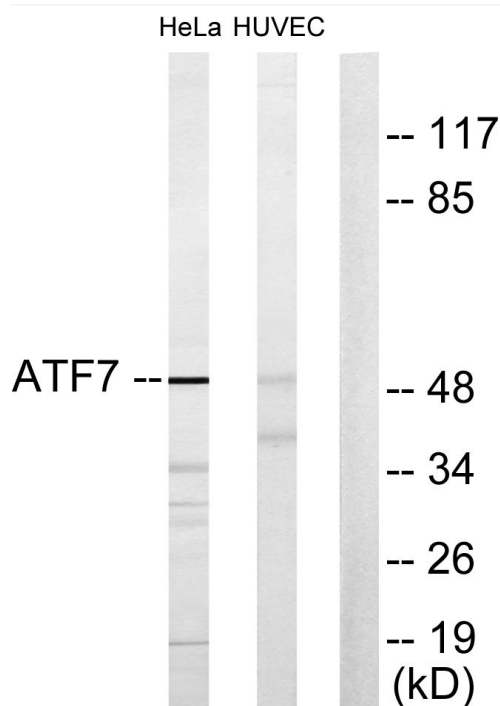
监督电话: 15950492658



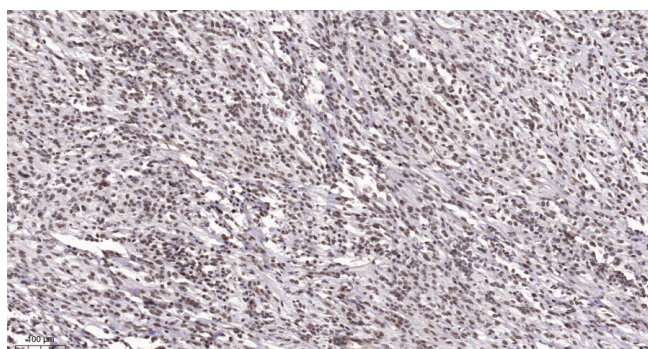
Products Images



Western Blot analysis of various cells using ATF-7 Polyclonal Antibody



Western blot analysis of lysates from HeLa and HUVEC cells, using ATF7 Antibody. The lane on the right is blocked with the synthesized peptide.



Immunohistochemical analysis of paraffin-embedded human Small intestinal stromal tumor. 1, Tris-EDTA, pH9.0 was used for antigen retrieval. 2 Antibody was diluted at 1:200(4° overnight. 3, Secondary antibody was diluted at 1:200(room temperature, 45min).

Nanjing BYabscience technology Co.,Ltd



Nanjing BYabscience technology Co.,Ltd

网址: www.njbybio.com

官方热线: 025-5229-8998

监督电话: 15950492658