



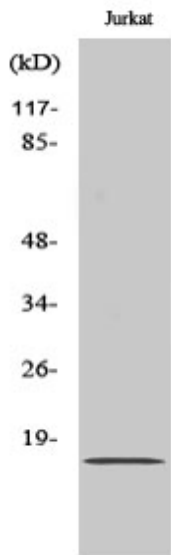
BUD31 Polyclonal Antibody

Catalog No	BYab-01578
Isotype	IgG
Reactivity	Human;Mouse;Rat
Applications	WB;IHC;IF;ELISA
Gene Name	BUD31
Protein Name	Protein BUD31 homolog
Immunogen	The antiserum was produced against synthesized peptide derived from human BUD31. AA range:10-59
Specificity	BUD31 Polyclonal Antibody detects endogenous levels of BUD31 protein.
Formulation	Liquid in PBS containing 50% glycerol, 0.5% BSA and 0.02% sodium azide.
Source	Polyclonal, Rabbit,IgG
Purification	The antibody was affinity-purified from rabbit antiserum by affinity-chromatography using epitope-specific immunogen.
Dilution	WB: 1/500 - 1/2000. IHC: 1/100 - 1/300. ELISA: 1/20000.. IF 1:50-200
Concentration	1 mg/ml
Purity	≥90%
Storage Stability	-20°C/1 year
Synonyms	BUD31; EDG2; Protein BUD31 homolog; Protein EDG-2; Protein G10 homolog
Observed Band	17kD
Cell Pathway	Nucleus . Detected in chromatin at the promoter of AR target genes. .
Tissue Specificity	Detected in epithelial and stromal cells in benign prostate hyperplasia tissue (at protein level).
Function	similarity:Belongs to the BUD31 (G10) family.,
Background	similarity:Belongs to the BUD31 (G10) family.,
matters needing attention	Avoid repeated freezing and thawing!
Usage suggestions	This product can be used in immunological reaction related experiments. For more information, please consult technical personnel.

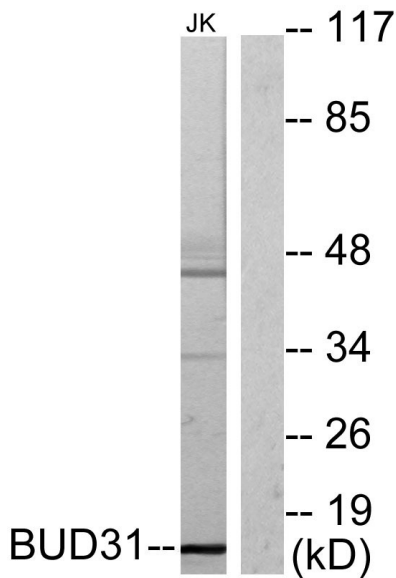
Nanjing BYabscience technology Co.,Ltd



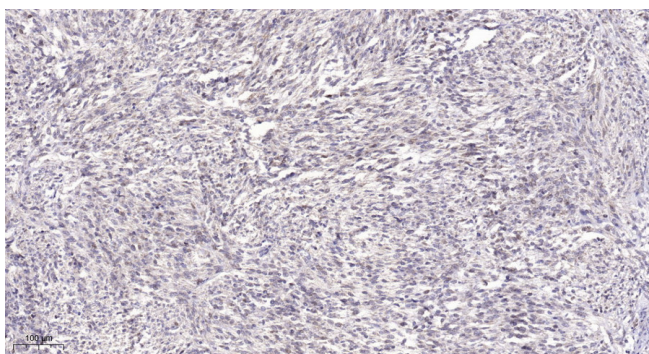
Products Images



Western Blot analysis of various cells using BUD31 Polyclonal Antibody cells nucleus extracted by Minute TM Cytoplasmic and Nuclear Fractionation kit (SC-003, Invent biotech, MN, USA).



Western blot analysis of lysates from Jurkat cells, using BUD31 Antibody. The lane on the right is blocked with the synthesized peptide.



Immunohistochemical analysis of paraffin-embedded human Small intestinal stromal tumor. 1, Tris-EDTA,pH9.0 was used for antigen retrieval. 2 Antibody was diluted at 1:200(4° overnight.3,Secondary antibody was diluted at 1:200(room temperature, 45min).