



CCDC102A Polyclonal Antibody

Catalog No	BYab-01594
Isotype	IgG
Reactivity	Human;Mouse
Applications	WB;ELISA
Gene Name	CCDC102A
Protein Name	Coiled-coil domain-containing protein 102A
Immunogen	The antiserum was produced against synthesized peptide derived from human CCDC102A. AA range:341-390
Specificity	CCDC102A Polyclonal Antibody detects endogenous levels of CCDC102A protein.
Formulation	Liquid in PBS containing 50% glycerol, 0.5% BSA and 0.02% sodium azide.
Source	Polyclonal, Rabbit,IgG
Purification	The antibody was affinity-purified from rabbit antiserum by affinity-chromatography using epitope-specific immunogen.
Dilution	Western Blot: 1/500 - 1/2000. ELISA: 1/20000. Not yet tested in other applications.
Concentration	1 mg/ml
Purity	≥90%
Storage Stability	-20°C/1 year
Synonyms	CCDC102A; Coiled-coil domain-containing protein 102A
Observed Band	55kD
Cell Pathway	myosin complex,
Tissue Specificity	Brain,Placenta,Uterus,
Function	
Background	CCDC102A (Coiled-Coil Domain Containing 102A) is a Protein Coding gene. An important paralog of this gene is CCDC102B.
matters needing attention	Avoid repeated freezing and thawing!

Nanjing BYabscience technology Co.,Ltd

网址: www.njbybio.com

官方热线: 025-5229-8998

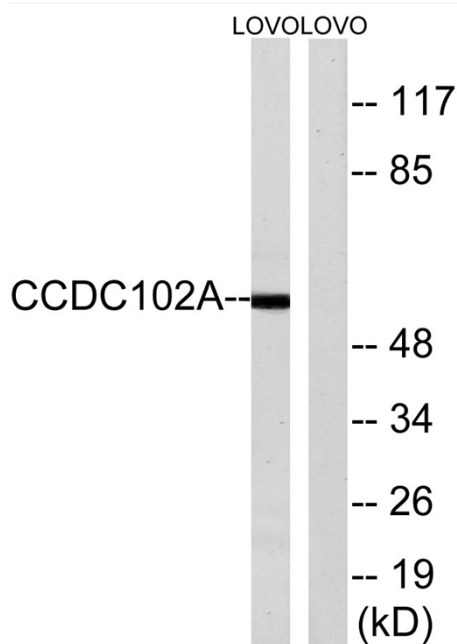
监督电话: 15950492658



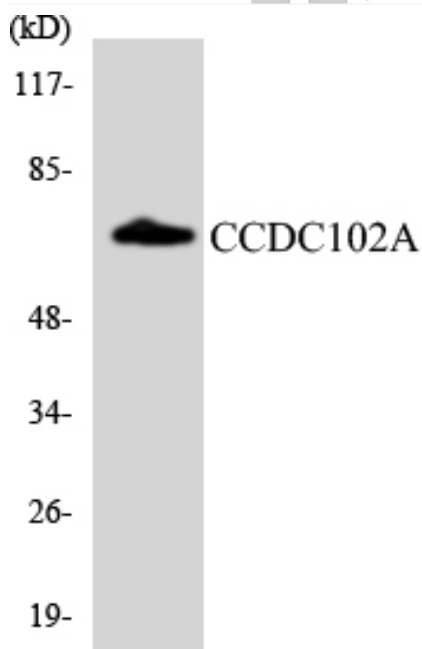
Usage suggestions

This product can be used in immunological reaction related experiments. For more information, please consult technical personnel.

Products Images



Western blot analysis of lysates from LOVO cells, using CCDC102A Antibody. The lane on the right is blocked with the synthesized peptide.



Western blot analysis of the lysates from HepG2 cells using CCDC102A antibody.

Nanjing BYabs science technology Co.,Ltd

网址: www.njbybio.com

官方热线: 025-5229-8998

监督电话: 15950492658