



# CTDSP1 Polyclonal Antibody

<b>Catalog No</b>	BYab-01635
<b>Isotype</b>	IgG
<b>Reactivity</b>	Human;Mouse;Rat
<b>Applications</b>	WB;IHC;IF;ELISA
<b>Gene Name</b>	CTDSP1
<b>Protein Name</b>	Carboxy-terminal domain RNA polymerase II polypeptide A small phosphatase 1
<b>Immunogen</b>	The antiserum was produced against synthesized peptide derived from human CTDSP1. AA range:1-50
<b>Specificity</b>	CTDSP1 Polyclonal Antibody detects endogenous levels of CTDSP1 protein.
<b>Formulation</b>	Liquid in PBS containing 50% glycerol, 0.5% BSA and 0.02% sodium azide.
<b>Source</b>	Polyclonal, Rabbit,IgG
<b>Purification</b>	The antibody was affinity-purified from rabbit antiserum by affinity-chromatography using epitope-specific immunogen.
<b>Dilution</b>	WB: 1/500 - 1/2000. IHC: 1/100 - 1/300. ELISA: 1/40000.. IF 1:50-200
<b>Concentration</b>	1 mg/ml
<b>Purity</b>	≥90%
<b>Storage Stability</b>	-20°C/1 year
<b>Synonyms</b>	CTDSP1; NIF3; NLIIF; SCP1; Carboxy-terminal domain RNA polymerase II polypeptide A small phosphatase 1; Nuclear LIM interactor-interacting factor 3; NLI-IF; NLI-interacting factor 3; Small C-terminal domain phosphatase 1; SCP1; Small CTD ph
<b>Observed Band</b>	30kD
<b>Cell Pathway</b>	Nucleus . Colocalizes with RNA polymerase II.
<b>Tissue Specificity</b>	Expression is restricted to non-neuronal tissues. Highest expression in skeletal muscle, spleen, lung and placenta.
<b>Function</b>	catalytic activity:A phosphoprotein + H(2)O = a protein + phosphate.,similarity:Contains 1 FCP1 homology domain.,subunit:May interact with LDB1 .,tissue specificity:Ubiquitously expressed, with highest expression in spleen, lung and placenta.,
<b>Background</b>	CTD small phosphatase 1(CTDSP1) Homo sapiens This gene encodes a member of the small C-terminal domain phosphatase (SCP) family of nuclear

**Nanjing BYabs science technology Co.,Ltd**



phosphatases. These proteins play a role in transcriptional regulation through specific dephosphorylation of phosphoserine 5 within tandem heptapeptide repeats of the C-terminal domain of RNA polymerase II. The encoded protein plays a role in neuronal gene silencing in non-neuronal cells, and may also inhibit osteoblast differentiation. Alternatively spliced transcript variants encoding multiple isoforms have been observed for this gene. [provided by RefSeq, Oct 2011],

**matters needing attention**

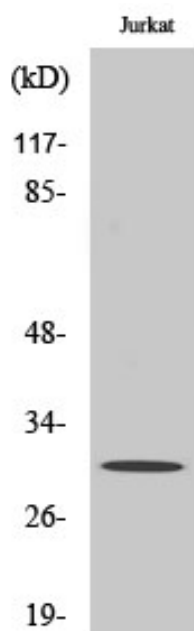
Avoid repeated freezing and thawing!

**Usage suggestions**

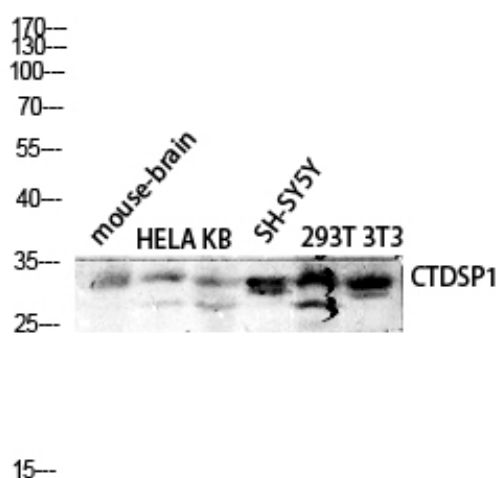
This product can be used in immunological reaction related experiments. For more information, please consult technical personnel.



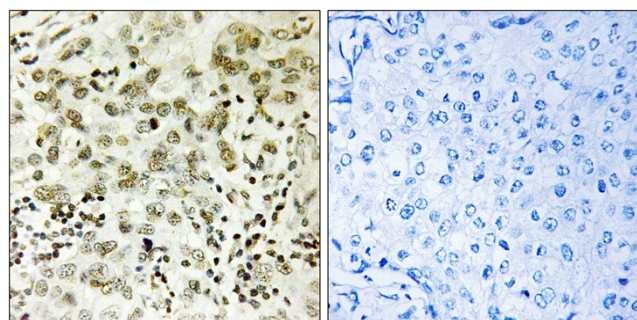
## Products Images



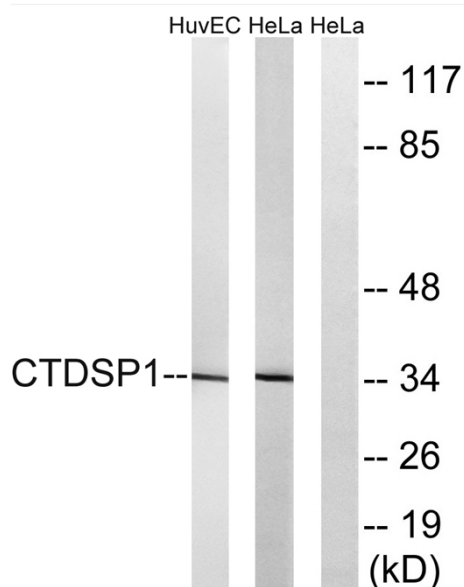
Western Blot analysis of various cells using CTDSP1 Polyclonal Antibody diluted at 1:1000 cells nucleus extracted by Minute TM Cytoplasmic and Nuclear Fractionation kit (SC-003, Inventbiotech, MN, USA).



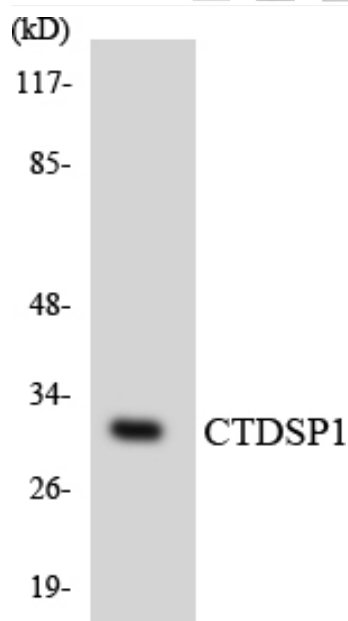
Western blot analysis of mouse-brain HELA KB SH-SY5Y 293T 3T3 lysis using CTDSP1 antibody. Antibody was diluted at 1:1000 cells nucleus extracted by Minute TM Cytoplasmic and Nuclear Fractionation kit (SC-003, Inventbiotech, MN, USA).



Immunohistochemistry analysis of paraffin-embedded human breast carcinoma tissue, using CTDSP1 Antibody. The picture on the right is blocked with the synthesized peptide.



Western blot analysis of lysates from HeLa and HUVEC cells, using CTDSP1 Antibody. The lane on the right is blocked with the synthesized peptide.



Western blot analysis of the lysates from HepG2 cells using CTDSP1 antibody.