



# DNA pol α Polyclonal Antibody

<b>Catalog No</b>	BYab-01654
<b>Isotype</b>	IgG
<b>Reactivity</b>	Human;Rat;Mouse;
<b>Applications</b>	WB;ELISA
<b>Gene Name</b>	POLA1
<b>Protein Name</b>	DNA polymerase alpha catalytic subunit
<b>Immunogen</b>	The antiserum was produced against synthesized peptide derived from human DNA Polymerase alpha. AA range:81-130
<b>Specificity</b>	DNA pol α Polyclonal Antibody detects endogenous levels of DNA pol α protein.
<b>Formulation</b>	Liquid in PBS containing 50% glycerol, 0.5% BSA and 0.02% sodium azide.
<b>Source</b>	Polyclonal, Rabbit,IgG
<b>Purification</b>	The antibody was affinity-purified from rabbit antiserum by affinity-chromatography using epitope-specific immunogen.
<b>Dilution</b>	Western Blot: 1/500 - 1/2000. ELISA: 1/20000. Not yet tested in other applications.
<b>Concentration</b>	1 mg/ml
<b>Purity</b>	≥90%
<b>Storage Stability</b>	-20°C/1 year
<b>Synonyms</b>	POLA1; POLA; DNA polymerase alpha catalytic subunit; DNA polymerase alpha catalytic subunit p180
<b>Observed Band</b>	165kD
<b>Cell Pathway</b>	Nucleus . Cytoplasm, cytosol . In the cytosol, colocalizes with RNA:DNA hybrids with a speckled pattern. .
<b>Tissue Specificity</b>	
<b>Function</b>	catalytic activity:Deoxynucleoside triphosphate + DNA(n) = diphosphate + DNA(n+1).,function:Polymerase alpha in a complex with DNA primase is a replicative polymerase.,miscellaneous:In eukaryotes there are five DNA polymerases: alpha, beta, gamma, delta, and epsilon which are responsible for different reactions of DNA synthesis.,PTM:A 165 kDa form is probably produced by proteolytic cleavage at Lys-124.,similarity:Belongs to the DNA polymerase type-B family.,subunit:Interacts with SV40 Large T antigen; this interaction allows viral DNA replication.,

Nanjing BYabscience technology Co.,Ltd

网址: [www.njbybio.com](http://www.njbybio.com)

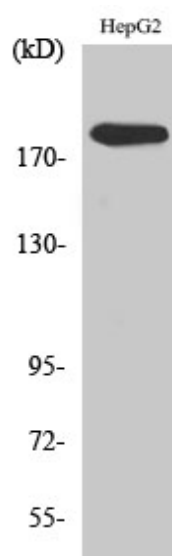
官方热线: 025-5229-8998

监督电话: 15950492658

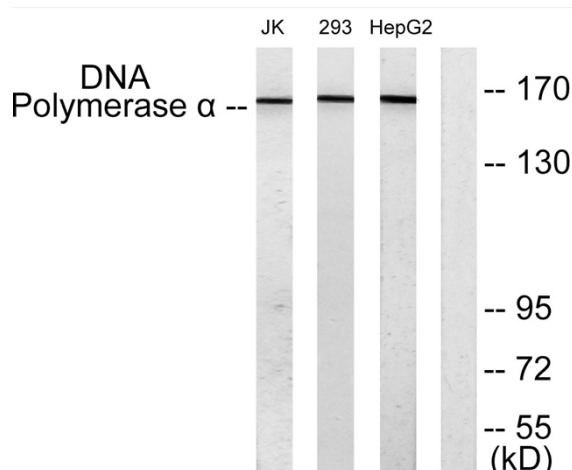


<b>Background</b>	This gene encodes the catalytic subunit of DNA polymerase, which together with a regulatory and two primase subunits, forms the DNA polymerase alpha complex. The catalytic subunit plays an essential role in the initiation of DNA replication. [provided by RefSeq, Mar 2010],
<b>matters needing attention</b>	Avoid repeated freezing and thawing!
<b>Usage suggestions</b>	This product can be used in immunological reaction related experiments. For more information, please consult technical personnel.

## Products Images



Western Blot analysis of various cells using DNA pol α Polyclonal Antibody diluted at 1:1000



Western blot analysis of lysates from HepG2, 293, and Jurkat cells, using DNA Polymerase alpha Antibody. The lane on the right is blocked with the synthesized peptide.

Nanjing BYabs science technology Co.,Ltd

网址: [www.njbybio.com](http://www.njbybio.com)

官方热线: 025-5229-8998

监督电话: 15950492658