



DNA pol β Polyclonal Antibody

Catalog No	BYab-01655
Isotype	IgG
Reactivity	Human;Mouse;Rat
Applications	WB;IHC;IF;ELISA
Gene Name	POLB
Protein Name	DNA polymerase beta
Immunogen	The antiserum was produced against synthesized peptide derived from human DNA Polymerase beta. AA range:286-335
Specificity	DNA pol β Polyclonal Antibody detects endogenous levels of DNA pol β protein.
Formulation	Liquid in PBS containing 50% glycerol, 0.5% BSA and 0.02% sodium azide.
Source	Polyclonal, Rabbit,IgG
Purification	The antibody was affinity-purified from rabbit antiserum by affinity-chromatography using epitope-specific immunogen.
Dilution	WB: 1/500 - 1/2000. IHC: 1/100 - 1/300. ELISA: 1/10000.. IF 1:50-200
Concentration	1 mg/ml
Purity	$\geq 90\%$
Storage Stability	-20°C/1 year
Synonyms	POLB; DNA polymerase beta
Observed Band	38kD
Cell Pathway	Nucleus. Cytoplasm. Cytoplasmic in normal conditions. Translocates to the nucleus following DNA damage.
Tissue Specificity	Skin,Testis,
Function	catalytic activity:Deoxynucleoside triphosphate + DNA(n) = diphosphate + DNA(n+1).,cofactor:Binds 2 magnesium ions per subunit.,domain:Residues 239-252 form a flexible loop which appears to affect the polymerase fidelity.,function:Repair polymerase. Conducts "gap-filling" DNA synthesis in a stepwise distributive fashion rather than in a processive fashion as for other DNA polymerases. Has a 5'-deoxyribose-5-phosphate lyase (dRP lyase) activity.,PTM:Methylation by PRMT6 stimulates the polymerase activity by enhancing DNA binding and processivity.,similarity:Belongs to the DNA polymerase type-X family.,subunit:Monomer.,

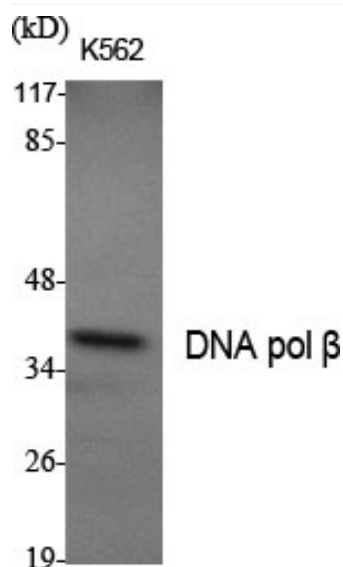
Nanjing BYabscience technology Co.,Ltd



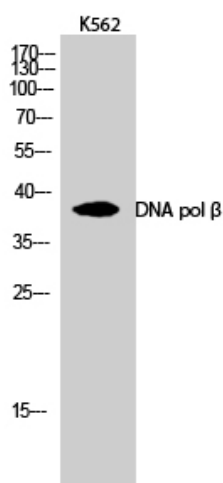
Background	The protein encoded by this gene is a DNA polymerase involved in base excision and repair, also called gap-filling DNA synthesis. The encoded protein, acting as a monomer, is normally found in the cytoplasm, but it translocates to the nucleus upon DNA damage. Several transcript variants of this gene exist, but the full-length nature of only one has been described to date. [provided by RefSeq, Sep 2011],
matters needing attention	Avoid repeated freezing and thawing!
Usage suggestions	This product can be used in immunological reaction related experiments. For more information, please consult technical personnel.



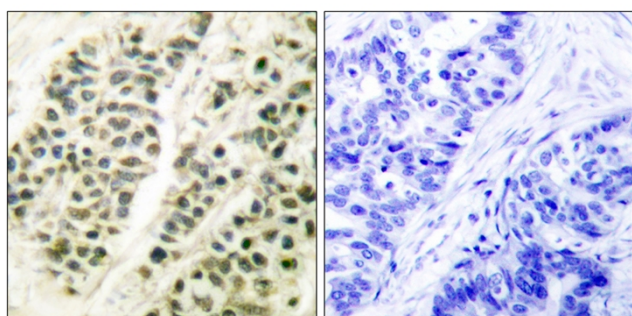
Products Images



Western Blot analysis of various cells using DNA pol β Polyclonal Antibody



Western Blot analysis of K562 cells using DNA pol β Polyclonal Antibody



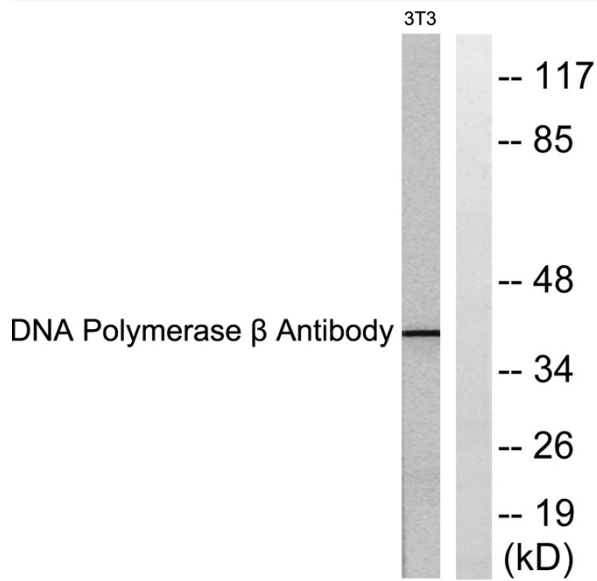
Immunohistochemistry analysis of paraffin-embedded human breast carcinoma tissue, using DNA Polymerase beta Antibody. The picture on the right is blocked with the synthesized peptide.

Nanjing BYabs science technology Co.,Ltd

网址: www.njbybio.com

官方热线: 025-5229-8998

监督电话: 15950492658



Western blot analysis of lysates from NIH/3T3 cells, using DNA Polymerase beta Antibody. The lane on the right is blocked with the synthesized peptide.