



DNA pol δ3 Polyclonal Antibody

Catalog No	BYab-01658
Isotype	IgG
Reactivity	Human;Mouse;Rat
Applications	WB;ELISA
Gene Name	POLD3
Protein Name	DNA polymerase delta subunit 3
Immunogen	The antiserum was produced against synthesized peptide derived from human POLD3. AA range:411-460
Specificity	DNA pol δ3 Polyclonal Antibody detects endogenous levels of DNA pol δ3 protein.
Formulation	Liquid in PBS containing 50% glycerol, 0.5% BSA and 0.02% sodium azide.
Source	Polyclonal, Rabbit,IgG
Purification	The antibody was affinity-purified from rabbit antiserum by affinity-chromatography using epitope-specific immunogen.
Dilution	Western Blot: 1/500 - 1/2000. ELISA: 1/20000. Not yet tested in other applications.
Concentration	1 mg/ml
Purity	≥90%
Storage Stability	-20°C/1 year
Synonyms	POLD3; KIAA0039; DNA polymerase delta subunit 3; DNA polymerase delta subunit p66
Observed Band	51kD
Cell Pathway	Cytoplasm . Nucleus . Partially colocalizes with PCNA and POLD1 at S phase replication sites (PubMed:11595739). Recruited to DNA damage sites within 2 hours following UV irradiation (PubMed:20227374, PubMed:22801543). .
Tissue Specificity	Bone marrow,Brain,Duodenum,Embryonic kidney,Epithelium,Lymp
Function	function:Required for optimal DNA polymerase delta activity.,subunit:Heterotetramer composed of subunits of 125 kDa, 50 kDa, 66 kDa and 12 kDa. Interacts with POLD2. Interacts with PCNA.,
Background	This gene encodes the 66-kDa subunit of DNA polymerase delta. DNA polymerase delta possesses both polymerase and 3' to 5' exonuclease activity and plays a critical role in DNA replication and repair. The encoded protein plays a role in regulating the activity of DNA polymerase delta through interactions with other subunits and the processivity cofactor proliferating

Nanjing BYabscience technology Co.,Ltd



cell nuclear antigen (PCNA). Alternatively spliced transcript variants have been observed for this gene. [provided by RefSeq, Mar 2012],

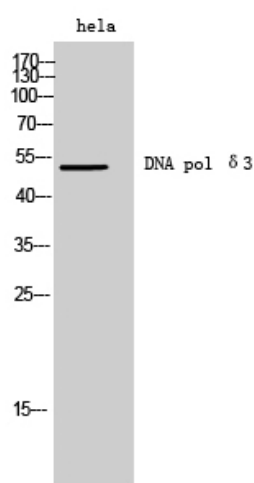
matters needing attention

Avoid repeated freezing and thawing!

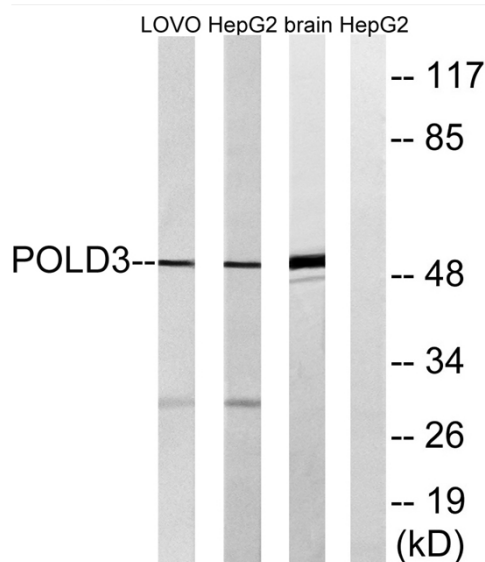
Usage suggestions

This product can be used in immunological reaction related experiments. For more information, please consult technical personnel.

Products Images



Western Blot analysis of hela cells using DNA pol $\delta 3$ Polyclonal Antibody diluted at 1:500 cells nucleus extracted by Minute TM Cytoplasmic and Nuclear Fractionation kit (SC-003, Invent biotech, MN, USA).



Western blot analysis of lysates from LOVO, HepG2, and mouse brain cells, using POLD3 Antibody. The lane on the right is blocked with the synthesized peptide.

Nanjing BYabs science technology Co., Ltd

网址: www.njbybio.com

官方热线: 025-5229-8998

监督电话: 15950492658