



## EF-G2 Polyclonal Antibody

Catalog No	BYab-01681
Isotype	IgG
Reactivity	Human;Rat;Mouse;
Applications	WB;IHC;IF;ELISA
Gene Name	GFM2
Protein Name	Ribosome-releasing factor 2 mitochondrial
Immunogen	The antiserum was produced against synthesized peptide derived from human GFM2. AA range:441-490
Specificity	EF-G2 Polyclonal Antibody detects endogenous levels of EF-G2 protein.
Formulation	Liquid in PBS containing 50% glycerol, 0.5% BSA and 0.02% sodium azide.
Source	Polyclonal, Rabbit,IgG
Purification	The antibody was affinity-purified from rabbit antiserum by affinity-chromatography using epitope-specific immunogen.
Dilution	Western Blot: 1/500 - 1/2000. Immunohistochemistry: 1/100 - 1/300. Immunofluorescence: 1/200 - 1/1000. ELISA: 1/20000. Not yet tested in other applications.
Concentration	1 mg/ml
Purity	≥90%
Storage Stability	-20°C/1 year
Synonyms	GFM2; EFG2; MSTP027; Ribosome-releasing factor 2; mitochondrial; RRF2mt; Elongation factor G 2, mitochondrial; EF-G2mt; mEF-G 2; Elongation factor G2; hEFG2
Observed Band	87kD
Cell Pathway	Mitochondrion .
Tissue Specificity	Widely expressed.
Function	translation, mitochondrion organization, cellular component disassembly, mitochondrial translation, ribosome disassembly, macromolecular complex disassembly, ribonucleoprotein complex disassembly, cellular macromolecular complex subunit organization, cellular macromolecular complex disassembly, macromolecular complex subunit organization,
Background	Eukaryotes contain two protein translational systems, one in the cytoplasm and one in the mitochondria. Mitochondrial translation is crucial for maintaining

Nanjing BYabscience technology Co.,Ltd



mitochondrial function and mutations in this system lead to a breakdown in the respiratory chain-oxidative phosphorylation system and to impaired maintenance of mitochondrial DNA. This gene encodes one of the mitochondrial translation elongation factors, which is a GTPase that plays a role at the termination of mitochondrial translation by mediating the disassembly of ribosomes from messenger RNA . Its role in the regulation of normal mitochondrial function and in disease states attributed to mitochondrial dysfunction is not known. Alternative splicing results in multiple transcript variants encoding distinct isoforms. [provided by RefSeq, Jul 2013],

**matters needing attention**

Avoid repeated freezing and thawing!

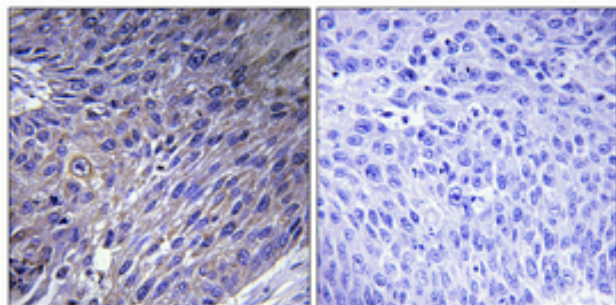
**Usage suggestions**

This product can be used in immunological reaction related experiments. For more information, please consult technical personnel.

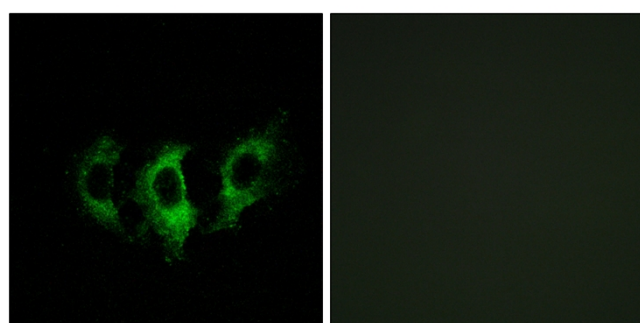
Nanjing BYabscience technology Co.,Ltd



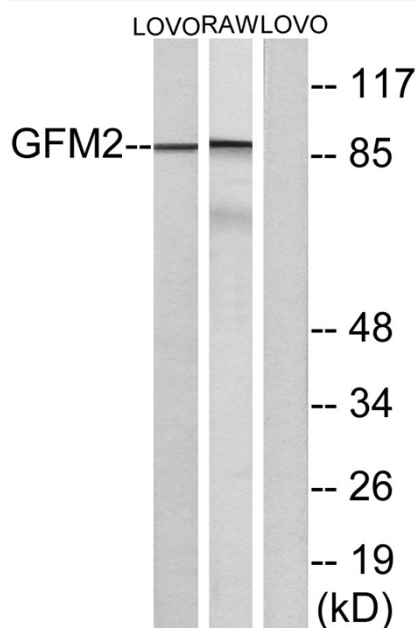
## Products Images



Immunohistochemical analysis of paraffin-embedded Human lung cancer. Antibody was diluted at 1:100(4° overnight). High-pressure and temperature Tris-EDTA,pH8.0 was used for antigen retrieval. Negative contrl (right) obtained from antibody was pre-absorbed by immunogen peptide.



Immunofluorescence analysis of A549 cells, using GFM2 Antibody. The picture on the right is blocked with the synthesized peptide.



Western blot analysis of lysates from LOVO and RAW264.7 cells, using GFM2 Antibody. The lane on the right is blocked with the synthesized peptide.