



# Elf-5 Polyclonal Antibody

<b>Catalog No</b>	BYab-01691
<b>Isotype</b>	IgG
<b>Reactivity</b>	Human;Mouse
<b>Applications</b>	WB;IF;ELISA
<b>Gene Name</b>	ELF5
<b>Protein Name</b>	ETS-related transcription factor Elf-5
<b>Immunogen</b>	The antiserum was produced against synthesized peptide derived from human ELF5. AA range:191-240
<b>Specificity</b>	Elf-5 Polyclonal Antibody detects endogenous levels of Elf-5 protein.
<b>Formulation</b>	Liquid in PBS containing 50% glycerol, 0.5% BSA and 0.02% sodium azide.
<b>Source</b>	Polyclonal, Rabbit,IgG
<b>Purification</b>	The antibody was affinity-purified from rabbit antiserum by affinity-chromatography using epitope-specific immunogen.
<b>Dilution</b>	Western Blot: 1/500 - 1/2000. Immunofluorescence: 1/200 - 1/1000. ELISA: 1/20000. Not yet tested in other applications.
<b>Concentration</b>	1 mg/ml
<b>Purity</b>	≥90%
<b>Storage Stability</b>	-20°C/1 year
<b>Synonyms</b>	ELF5; ESE2; ETS-related transcription factor Elf-5; E74-like factor 5; Epithelium-restricted ESE-1-related Ets factor; Epithelium-specific Ets transcription factor 2; ESE-2
<b>Observed Band</b>	31kD
<b>Cell Pathway</b>	Nucleus .
<b>Tissue Specificity</b>	Expressed exclusively in tissues with a high content of epithelial cells. Highly expressed in salivary gland, mammary gland, kidney and prostate. Weakly expressed in placenta and lung. Isoform 1 and isoform 2 are differentially expressed in different tissues. In the kidney, only isoform 1 was expressed, while prostate expressed both isoforms, with levels of isoform 2 being higher. Expression is up-regulated during keratinocyte differentiation. Several epithelial carcinoma cell lines showed lack of expression.
<b>Function</b>	domain:The PNT domain acts as a transcriptional activator.,function:Transcriptionally activator that may play a role in regulating the later stages of keratinocytes terminal differentiation. Isoform 2 binds to DNA

**Nanjing BYabs science technology Co.,Ltd**



sequences containing the consensus nucleotide core sequence GGA[AT]. Transcriptionally activates SPRR2A and the parotid gland-specific PSP promoters.,similarity:Belongs to the ETS family.,similarity:Contains 1 ETS DNA-binding domain.,similarity:Contains 1 PNT (pointed) domain.,tissue specificity:Expressed exclusively in tissues with a high content of epithelial cells. Highly expressed in salivary gland, mammary gland, kidney and prostate. Weakly expressed in placenta and lung. Isoform 1 and isoform 2 are differentially expressed in different tissues. In the kidney, only isoform 1 was expressed, while prostate expressed both isoforms, with levels of isoform 2 being higher. Expre

## Background

The protein encoded by this gene is a member of an epithelium-specific subclass of the Ets transcription factor family. In addition to its role in regulating the later stages of terminal differentiation of keratinocytes, it appears to regulate a number of epithelium-specific genes found in tissues containing glandular epithelium such as salivary gland and prostate. It has very low affinity to DNA due to its negative regulatory domain at the amino terminus. Several alternatively spliced transcript variants encoding different isoforms have been described for this gene. [provided by RefSeq, Jul 2011],

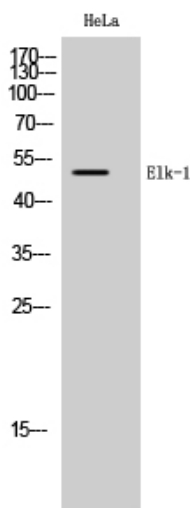
## matters needing attention

Avoid repeated freezing and thawing!

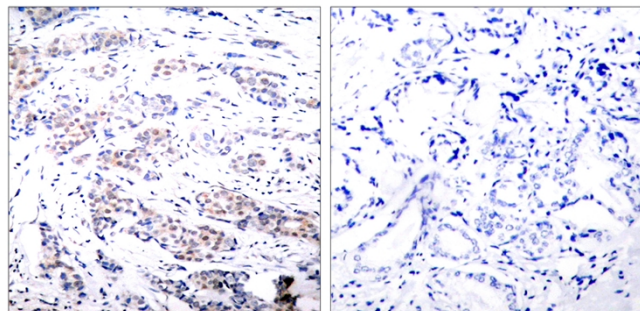
## Usage suggestions

This product can be used in immunological reaction related experiments. For more information, please consult technical personnel.

## Products Images



Western Blot analysis of various cells using Elf-5 Polyclonal Antibody cells nucleus extracted by Minute TM Cytoplasmic and Nuclear Fractionation kit (SC-003, Inventbiotech, MN, USA).



Western blot analysis of lysates from Jurkat, 293, and HUVEC cells, using ELF5 Antibody. The lane on the right is blocked with the synthesized peptide.

**Nanjing BYabscience technology Co.,Ltd**

