



# eRF3a Polyclonal Antibody

<b>Catalog No</b>	BYab-01702
<b>Isotype</b>	IgG
<b>Reactivity</b>	Human;Mouse;Rat
<b>Applications</b>	WB;IHC;IF;ELISA
<b>Gene Name</b>	GSPT1
<b>Protein Name</b>	Eukaryotic peptide chain release factor GTP-binding subunit ERF3A
<b>Immunogen</b>	The antiserum was produced against synthesized peptide derived from human GSPT1. AA range:101-150
<b>Specificity</b>	eRF3a Polyclonal Antibody detects endogenous levels of eRF3a protein.
<b>Formulation</b>	Liquid in PBS containing 50% glycerol, 0.5% BSA and 0.02% sodium azide.
<b>Source</b>	Polyclonal, Rabbit,IgG
<b>Purification</b>	The antibody was affinity-purified from rabbit antiserum by affinity-chromatography using epitope-specific immunogen.
<b>Dilution</b>	WB: 1/500 - 1/2000. IHC: 1/100 - 1/300. ELISA: 1/40000.. IF 1:50-200
<b>Concentration</b>	1 mg/ml
<b>Purity</b>	≥90%
<b>Storage Stability</b>	-20°C/1 year
<b>Synonyms</b>	GSPT1; ERF3A; Eukaryotic peptide chain release factor GTP-binding subunit ERF3A; Eukaryotic peptide chain release factor subunit 3a; eRF3a; G1 to S phase transition protein 1 homolog
<b>Observed Band</b>	55kD
<b>Cell Pathway</b>	intracellular,cytosol,translation release factor complex,
<b>Tissue Specificity</b>	Lung,Testis,
<b>Function</b>	function:Involved in translation termination in response to the termination codons UAA, UAG and UGA. Stimulates the activity of ERF1. Involved in regulation of mammalian cell growth.,similarity:Belongs to the GTP-binding elongation factor family. ERF3 subfamily.,subunit:Component of the mRNA surveillance SURF complex, at least composed of ERF1, ERF3 (ERF3A or ERF3B), EEF2, UPF1/RENT1, SMG1, SMG8 and SMG9.,
<b>Background</b>	function:Involved in translation termination in response to the termination codons UAA, UAG and UGA. Stimulates the activity of ERF1. Involved in regulation of

**Nanjing BYabscience technology Co.,Ltd**



mammalian cell growth.,similarity:Belongs to the GTP-binding elongation factor family. ERF3 subfamily.,subunit:Component of the mRNA surveillance SURF complex, at least composed of ERF1, ERF3 (ERF3A or ERF3B), EEF2, UPF1/RENT1, SMG1, SMG8 and SMG9.,

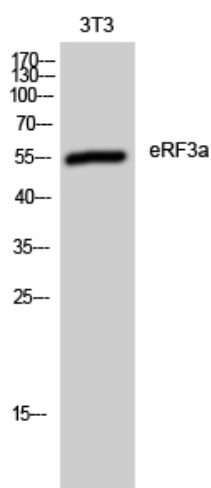
**matters needing attention**

Avoid repeated freezing and thawing!

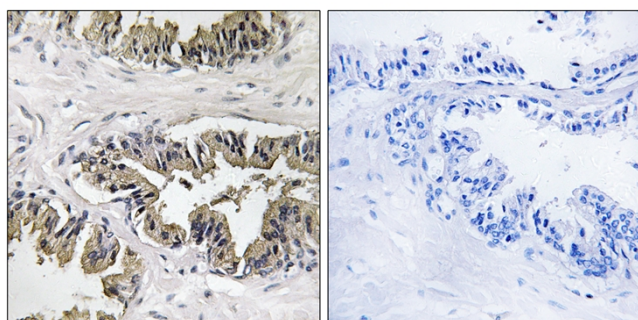
**Usage suggestions**

This product can be used in immunological reaction related experiments. For more information, please consult technical personnel.

## Products Images



Western Blot analysis of 3T3 cells using eRF3a Polyclonal Antibody



Immunohistochemistry analysis of paraffin-embedded human prostate carcinoma tissue, using GSPT1 Antibody. The picture on the right is blocked with the synthesized peptide.