



ETO-2 Polyclonal Antibody

Catalog No	BYab-01704
Isotype	IgG
Reactivity	Human;Mouse
Applications	IHC;IF;ELISA
Gene Name	CBFA2T3
Protein Name	Protein CBFA2T3
Immunogen	The antiserum was produced against synthesized peptide derived from human MTG16. AA range:261-310
Specificity	ETO-2 Polyclonal Antibody detects endogenous levels of ETO-2 protein.
Formulation	Liquid in PBS containing 50% glycerol, 0.5% BSA and 0.02% sodium azide.
Source	Polyclonal, Rabbit,IgG
Purification	The antibody was affinity-purified from rabbit antiserum by affinity-chromatography using epitope-specific immunogen.
Dilution	IHC: 1/100 - 1/300. ELISA: 1/20000.. IF 1:50-200
Concentration	1 mg/ml
Purity	≥90%
Storage Stability	-20°C/1 year
Synonyms	CBFA2T3; MTG16; MTGR2; ZMYND4; Protein CBFA2T3; MTG8-related protein 2; Myeloid translocation gene on chromosome 16 protein; hMTG16; Zinc finger MYND domain-containing protein 4
Observed Band	
Cell Pathway	[Isoform 1]: Nucleus, nucleolus. The RUNX1-CBFA2T3 fusion protein localizes to the nucleoplasm.; [Isoform 2]: Nucleus, nucleoplasm . Golgi apparatus membrane .
Tissue Specificity	Widely expressed with higher expression in heart, pancreas, skeletal muscle, spleen, thymus and peripheral blood leukocytes. Expressed in hematopoietic cells (at protein level).
Function	disease:A chromosomal aberration involving CBFA2T3 is found in therapy-related myeloid malignancies. Translocation t(16;21)(q24;q22) that forms a RUNX1-CBFA2T3 fusion protein.,function:Functions as a transcriptional repressor. Regulates the proliferation and the differentiation of erythroid progenitors by repressing the expression of TAL1 target genes. Plays a role in granulocyte differentiation. Isoform 2 functions as an A-kinase-anchoring protein

Nanjing BYabscience technology Co.,Ltd



(PubMed:11823486).,induction:Down-regulated by all-trans retinoic acid.,similarity:Belongs to the CBFA2T family.,similarity:Contains 1 MYND-type zinc finger.,similarity:Contains 1 TAFH (NHR1) domain.,subcellular location:The RUNX1-CBFA2T3 fusion protein localizes to the nucleoplasm.,subunit:Component of a TAL-1 complex composed at least of CBFA2T3, LDB1, TAL1 and TCF3 (By similarity). Heterodimer with RUNX1T1 and CBFA2T2. Interacts with ERBB4,

Background

This gene encodes a member of the myeloid translocation gene family which interact with DNA-bound transcription factors and recruit a range of corepressors to facilitate transcriptional repression. The t(16;21)(q24;q22) translocation is one of the less common karyotypic abnormalities in acute myeloid leukemia. The translocation produces a chimeric gene made up of the 5'-region of the runt-related transcription factor 1 gene fused to the 3'-region of this gene. This gene is also a putative breast tumor suppressor. Alternative splicing results in transcript variants. [provided by RefSeq, Nov 2010],

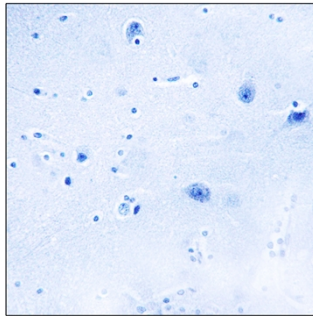
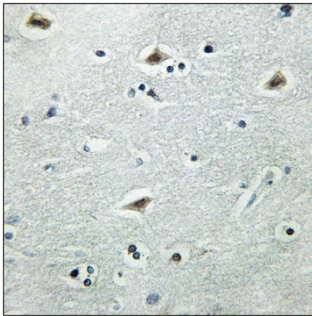
matters needing attention

Avoid repeated freezing and thawing!

Usage suggestions

This product can be used in immunological reaction related experiments. For more information, please consult technical personnel.

Products Images



Immunohistochemistry analysis of paraffin-embedded human brain tissue, using MTG16 Antibody. The picture on the right is blocked with the synthesized peptide.