



FBP3 Polyclonal Antibody

| | |
|---------------------------|--|
| Catalog No | BYab-01708 |
| Isotype | IgG |
| Reactivity | Human;Mouse;Rat |
| Applications | WB;IHC;IF;ELISA |
| Gene Name | FUBP3 |
| Protein Name | Far upstream element-binding protein 3 |
| Immunogen | The antiserum was produced against synthesized peptide derived from human FUBP3. AA range:201-250 |
| Specificity | FBP3 Polyclonal Antibody detects endogenous levels of FBP3 protein. |
| Formulation | Liquid in PBS containing 50% glycerol, 0.5% BSA and 0.02% sodium azide. |
| Source | Polyclonal, Rabbit,IgG |
| Purification | The antibody was affinity-purified from rabbit antiserum by affinity-chromatography using epitope-specific immunogen. |
| Dilution | WB: 1/500 - 1/2000. IHC: 1/100 - 1/300. ELISA: 1/20000.. IF 1:50-200 |
| Concentration | 1 mg/ml |
| Purity | ≥90% |
| Storage Stability | -20°C/1 year |
| Synonyms | FUBP3; FBP3; Far upstream element-binding protein 3; FUSE-binding protein 3 |
| Observed Band | 60kD |
| Cell Pathway | Nucleus . |
| Tissue Specificity | Detected in a number of cell lines. |
| Function | function:May interact with single-stranded DNA from the far-upstream element (FUSE). May activate gene expression.,PTM:Phosphorylated upon DNA damage, probably by ATM or ATR.,similarity:Contains 4 KH domains.,tissue specificity:Detected in a number of cell lines., |
| Background | function:May interact with single-stranded DNA from the far-upstream element (FUSE). May activate gene expression.,PTM:Phosphorylated upon DNA damage, probably by ATM or ATR.,similarity:Contains 4 KH domains.,tissue specificity:Detected in a number of cell lines., |

Nanjing BYabscience technology Co.,Ltd



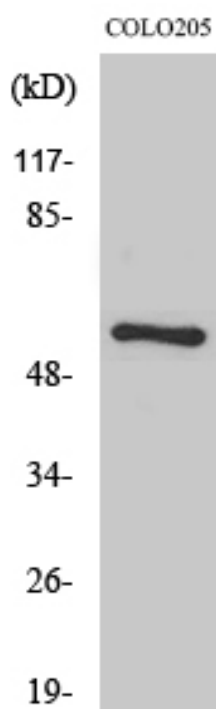
matters needing attention

Avoid repeated freezing and thawing!

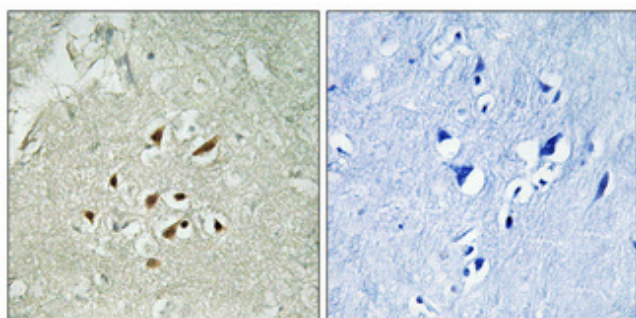
Usage suggestions

This product can be used in immunological reaction related experiments. For more information, please consult technical personnel.

Products Images



Western Blot analysis of various cells using FBP3 Polyclonal Antibody cells nucleus extracted by Minute TM Cytoplasmic and Nuclear Fractionation kit (SC-003, Inventbiotech, MN, USA).



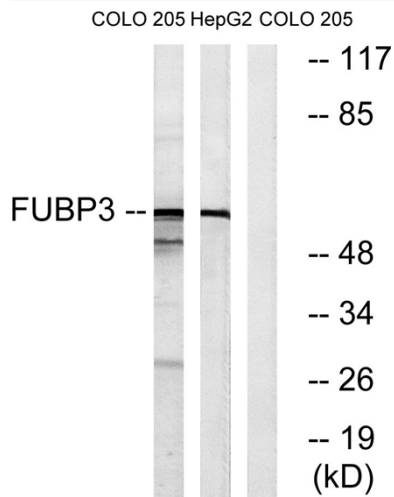
Immunohistochemical analysis of paraffin-embedded Human brain. Antibody was diluted at 1:100(4° overnight). High-pressure and temperature Tris-EDTA, pH8.0 was used for antigen retrieval. Negative contrl (right) obtained from antibody was pre-absorbed by immunogen peptide.

Nanjing BYabs science technology Co.,Ltd

网址: www.njbybio.com

官方热线: 025-5229-8998

监督电话: 15950492658



Western blot analysis of lysates from COLO and HepG2 cells, using FUBP3 Antibody. The lane on the right is blocked with the synthesized peptide.