



FEV Polyclonal Antibody

Catalog No	BYab-01710
Isotype	IgG
Reactivity	Human;Rat;Mouse;
Applications	WB;ELISA
Gene Name	FEV
Protein Name	Protein FEV
Immunogen	Synthesized peptide derived from the N-terminal region of human FEV.
Specificity	FEV Polyclonal Antibody detects endogenous levels of FEV protein.
Formulation	Liquid in PBS containing 50% glycerol, 0.5% BSA and 0.02% sodium azide.
Source	Polyclonal, Rabbit,IgG
Purification	The antibody was affinity-purified from rabbit antiserum by affinity-chromatography using epitope-specific immunogen.
Dilution	Western Blot: 1/500 - 1/2000. ELISA: 1/40000. Not yet tested in other applications.
Concentration	1 mg/ml
Purity	≥90%
Storage Stability	-20°C/1 year
Synonyms	FEV; PET1; Protein FEV; Fifth Ewing variant protein; PC12 ETS domain-containing transcription factor 1; PC12 ETS factor 1; Pet-1
Observed Band	25kD
Cell Pathway	Nucleus .
Tissue Specificity	In brain, exclusively expressed in the major serotonergic neurons of the dorsal and median raphe nuclei located in the midbrain and pons. Also detected in prostate and small intestine.
Function	disease:A chromosomal translocation involving FEV is found in Ewing tumors. Translocation t(2;21;22)(q23;q22;q12) that forms a EWSR1-FEV fusion protein with a potential oncogenic activity.,disease:Genetic variation in FEV may be associated with susceptibility to sudden infant death syndrome (SIDS) [MIM:272120]. SIDS remains elusive in its causes and devastating in its consequences. Despite the impressive decline in the incidence of SIDS since the recommendation to avoid the prone sleep position, SIDS remains a leading cause of death in the first year of life.,function:Functions as a transcriptional regulator. According to PubMed:1761502 it functions as a transcriptional repressor. Functions in the differentiation and the maintenance of the central serotonergic

Nanjing BYabscience technology Co.,Ltd



neurons. May play a role in cell growth.,similarity:Belongs to the ETS family.,similarity:Contains 1 ETS DNA-binding domain.,tiss

Background

This gene belongs to the ETS transcription factor family. ETS family members have a highly conserved 85-amino acid ETS domain that binds purine-rich DNA sequences. The alanine-rich C-terminus of this gene indicates that it may act as a transcription repressor. This gene is exclusively expressed in neurons of the central serotonin (5-HT) system, a system implicated in the pathogeny of such psychiatric diseases as depression, anxiety, and eating disorders. In some types of Ewing tumors, this gene is fused to the Ewing sarcoma (EWS) gene following chromosome translocations. [provided by RefSeq, Jul 2008],

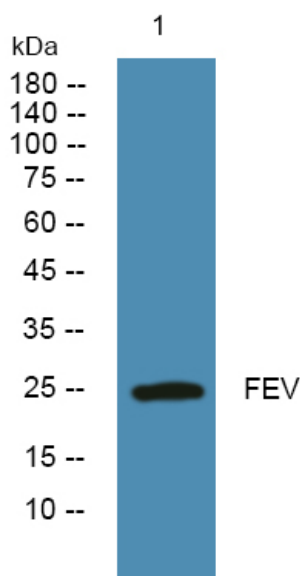
matters needing attention

Avoid repeated freezing and thawing!

Usage suggestions

This product can be used in immunological reaction related experiments. For more information, please consult technical personnel.

Products Images



Western blot analysis of lysates from K562 cells, primary antibody was diluted at 1:1000, 4° over night