



FoxB1/2 Polyclonal Antibody

Catalog No	BYab-01717
Isotype	IgG
Reactivity	Human;Mouse
Applications	WB;IHC;IF;ELISA
Gene Name	FOXB1/FOXB2
Protein Name	Forkhead box protein B1/2
Immunogen	The antiserum was produced against synthesized peptide derived from human FOXB1/2. AA range:51-100
Specificity	FoxB1/2 Polyclonal Antibody detects endogenous levels of FoxB1/2 protein.
Formulation	Liquid in PBS containing 50% glycerol, 0.5% BSA and 0.02% sodium azide.
Source	Polyclonal, Rabbit,IgG
Purification	The antibody was affinity-purified from rabbit antiserum by affinity-chromatography using epitope-specific immunogen.
Dilution	WB: 1/500 - 1/2000. IHC: 1/100 - 1/300. ELISA: 1/20000.. IF 1:50-200
Concentration	1 mg/ml
Purity	≥90%
Storage Stability	-20°C/1 year
Synonyms	FOXB1; FKH5; Forkhead box protein B1; Transcription factor FKH-5; FOXB2; Forkhead box protein B2
Observed Band	45kD
Cell Pathway	Nucleus .
Tissue Specificity	Lung,Placenta,
Function	similarity:Contains 1 fork-head DNA-binding domain.,
Background	similarity:Contains 1 fork-head DNA-binding domain.,
matters needing attention	Avoid repeated freezing and thawing!

Nanjing BYabscience technology Co.,Ltd

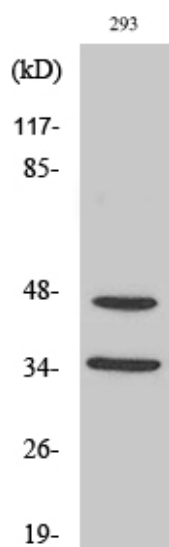


Usage suggestions

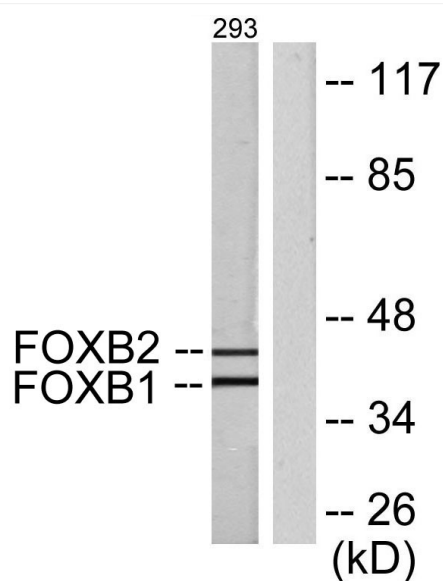
This product can be used in immunological reaction related experiments. For more information, please consult technical personnel.



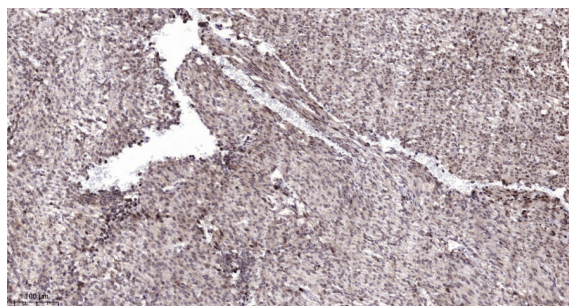
Products Images



Western Blot analysis of various cells using FoxB1/2 Polyclonal Antibody cells nucleus extracted by Minute TM Cytoplasmic and Nuclear Fractionation kit (SC-003, Inventbiotech, MN, USA).



Western blot analysis of lysates from 293 cells, using FOXB1/2 Antibody. The lane on the right is blocked with the synthesized peptide.



Immunohistochemical analysis of paraffin-embedded human Colon cancer. 1, Antibody was diluted at 1:200 (4° overnight). 2, Tris-EDTA, pH 9.0 was used for antigen retrieval. 3, Secondary antibody was diluted at 1:200 (room temperature, 45 min).