



# FXR2 Polyclonal Antibody

|                           |  |
|---------------------------|--|
| <b>Catalog No</b>         | BYab-01742   |
| <b>Isotype</b>            | IgG  |
| <b>Reactivity</b>         | Human;Mouse  |
| <b>Applications</b>       | WB;IHC;IF;ELISA  |
| <b>Gene Name</b>          | FXR2   |
| <b>Protein Name</b>       | Fragile X mental retardation syndrome-related protein 2  |
| <b>Immunogen</b>          | The antiserum was produced against synthesized peptide derived from human FXR2. AA range:551-600   |
| <b>Specificity</b>        | FXR2 Polyclonal Antibody detects endogenous levels of FXR2 protein.  |
| <b>Formulation</b>        | Liquid in PBS containing 50% glycerol, 0.5% BSA and 0.02% sodium azide.  |
| <b>Source</b>             | Polyclonal, Rabbit,IgG   |
| <b>Purification</b>       | The antibody was affinity-purified from rabbit antiserum by affinity-chromatography using epitope-specific immunogen.  |
| <b>Dilution</b>           | Western Blot: 1/500 - 1/2000. Immunohistochemistry: 1/100 - 1/300. Immunofluorescence: 1/200 - 1/1000. ELISA: 1/10000. Not yet tested in other applications.   |
| <b>Concentration</b>      | 1 mg/ml  |
| <b>Purity</b>             | ≥90%   |
| <b>Storage Stability</b>  | -20°C/1 year   |
| <b>Synonyms</b>           | FXR2; FMR1L2; Fragile X mental retardation syndrome-related protein 2  |
| <b>Observed Band</b>      | 74kD   |
| <b>Cell Pathway</b>       | Cytoplasm.   |
| <b>Tissue Specificity</b> | Brain,Epithelium,Lymph,PNS,Skin,   |
| <b>Function</b>           | function:RNA-binding protein.,similarity:Belongs to the FMR1 family.,similarity:Contains 2 KH domains.,subunit:Interacts with FMR1 and FXR1. Interacts with CYFIP2 but not with CYFIP1. Interacts with TDRD3.,   |
| <b>Background</b>         | The protein encoded by this gene is a RNA binding protein containing two KH domains and one RCG box, which is similar to FMRP and FXR1. It associates with polyribosomes, predominantly with 60S large ribosomal subunits. This encoded protein may self-associate or interact with FMRP and FXR1. It may have a role in the development of fragile X mental retardation syndrome. [provided by RefSeq, Jul 2008], |

**Nanjing BYabs science technology Co.,Ltd**



**matters needing  
attention**

Avoid repeated freezing and thawing!

**Usage suggestions**

This product can be used in immunological reaction related experiments. For more information, please consult technical personnel.

Nanjing BYabscience technology Co.,Ltd

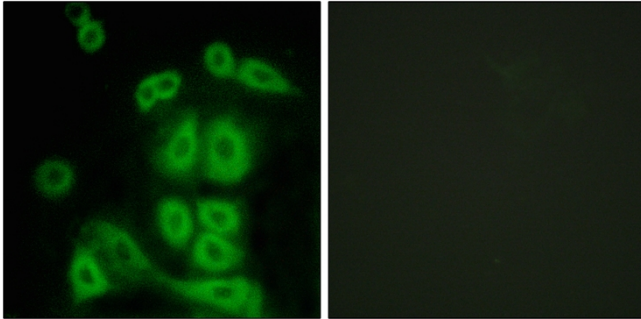
网址: [www.njbybio.com](http://www.njbybio.com)

官方热线: 025-5229-8998

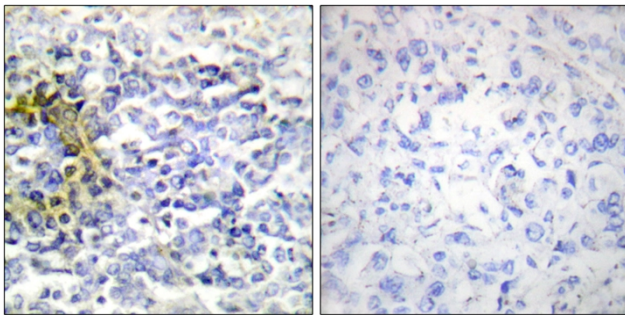
监督电话: 15950492658



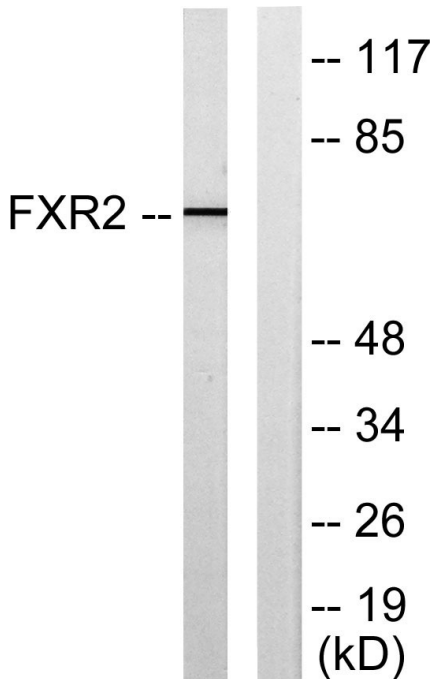
## Products Images



Immunofluorescence analysis of A549 cells, using FXR2 Antibody. The picture on the right is blocked with the synthesized peptide.



Immunohistochemistry analysis of paraffin-embedded human lung carcinoma tissue, using FXR2 Antibody. The picture on the right is blocked with the synthesized peptide.



Western blot analysis of lysates from COLO205 cells, using FXR2 Antibody. The lane on the right is blocked with the synthesized peptide.